

# EAST AND WEST FORK SAN JACINTO RIVER

## Coordination Committee

April 27, 2017

Steven Johnston

H-GAC

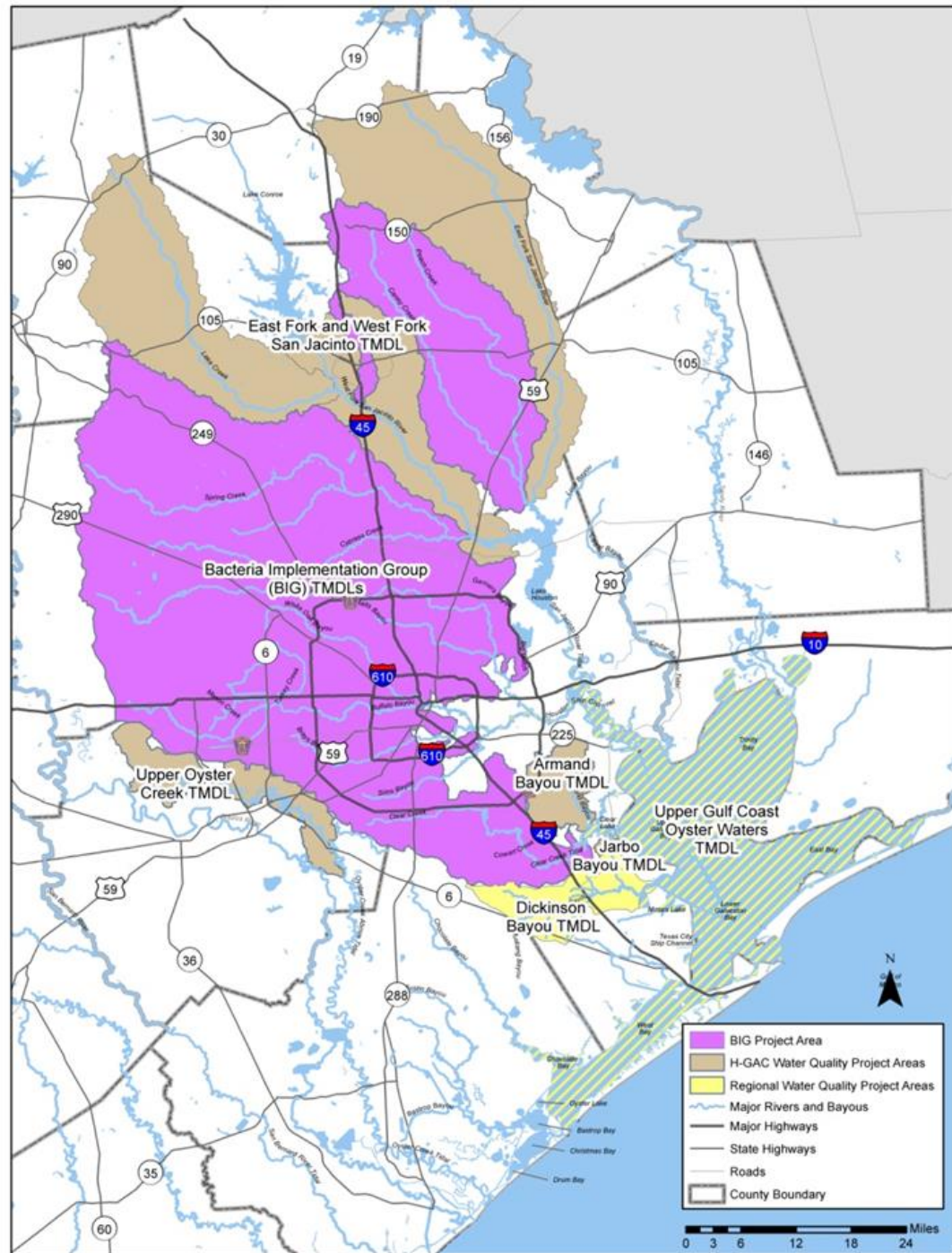
[steven.johnston@h-gac.com](mailto:steven.johnston@h-gac.com)



# Agenda

- 1:00 PM – 1:05 PM Welcome, Introductions, and Review Agenda
- 1:05 PM – 1:55 PM Review and Discuss Filling BIG Vacancies.
  - H-GAC facilitate a group discussion on the current vacancies and work with the committee to recommend nominations to the BIG.
- 1:55 PM – 2:00 PM TCEQ TMDL Updates
  - Mound Creek (1015A\_01)
- 2:00 PM – 2:45 PM BIG Annual Report:
  - Review the 2016 Annual Report.
  - Discuss implementation in 2016 calendar year.
- 2:45 PM – 2:55 PM Coordination Committee Discussion:
  - Coordination Committee with discuss updates to watershed planning activities.
    - Lake Conroe Watershed Protection Plan
    - Trust for Public Land's West Fork Greenprint
    - H-GAC's West Fork Watershed Protection Plan
- 2:55 PM – 3:00 PM Discuss and Review Next Steps
- 12:00 PM Adjourn

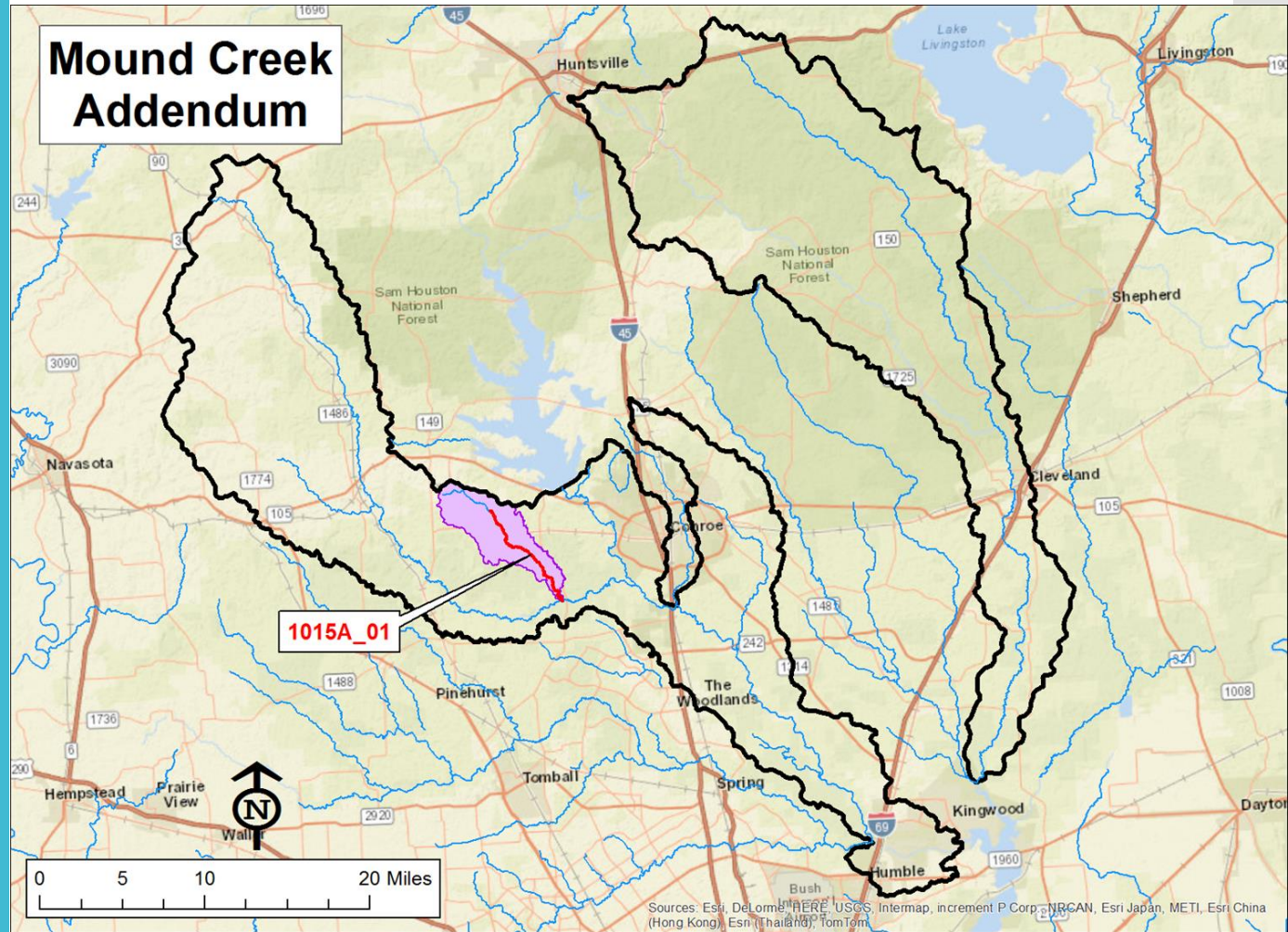
# Vacancies



# Vacancies

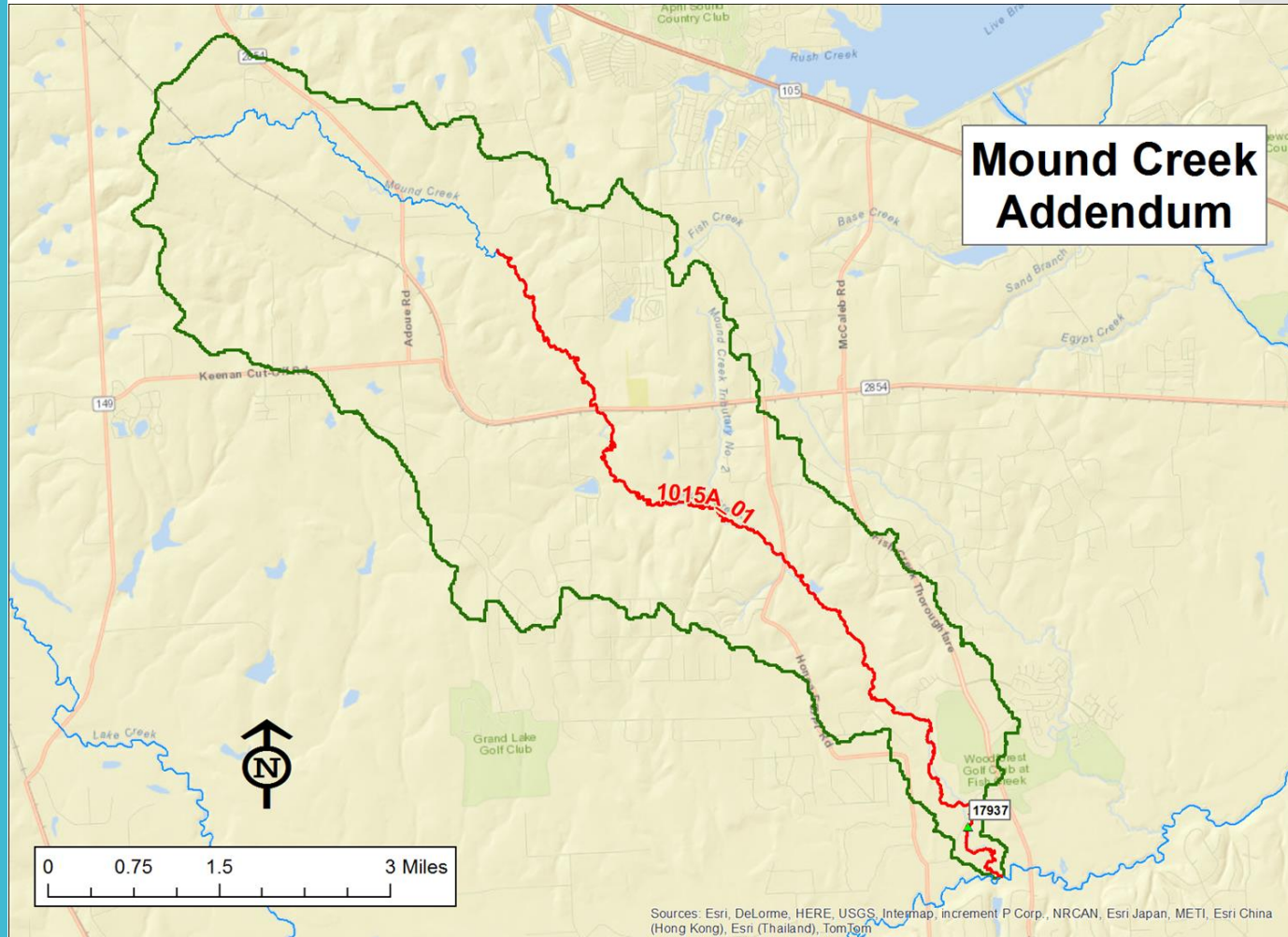
- There are four spots on the BIG Steering Committee available:
  - Agricultural Interest
  - Forest Interest
  - Rural County
  - Rural, Small-Sized (preferably non-MS<sub>4</sub>) City

# TMDL Update: Mound Creek





# TMDL Update: Mound Creek



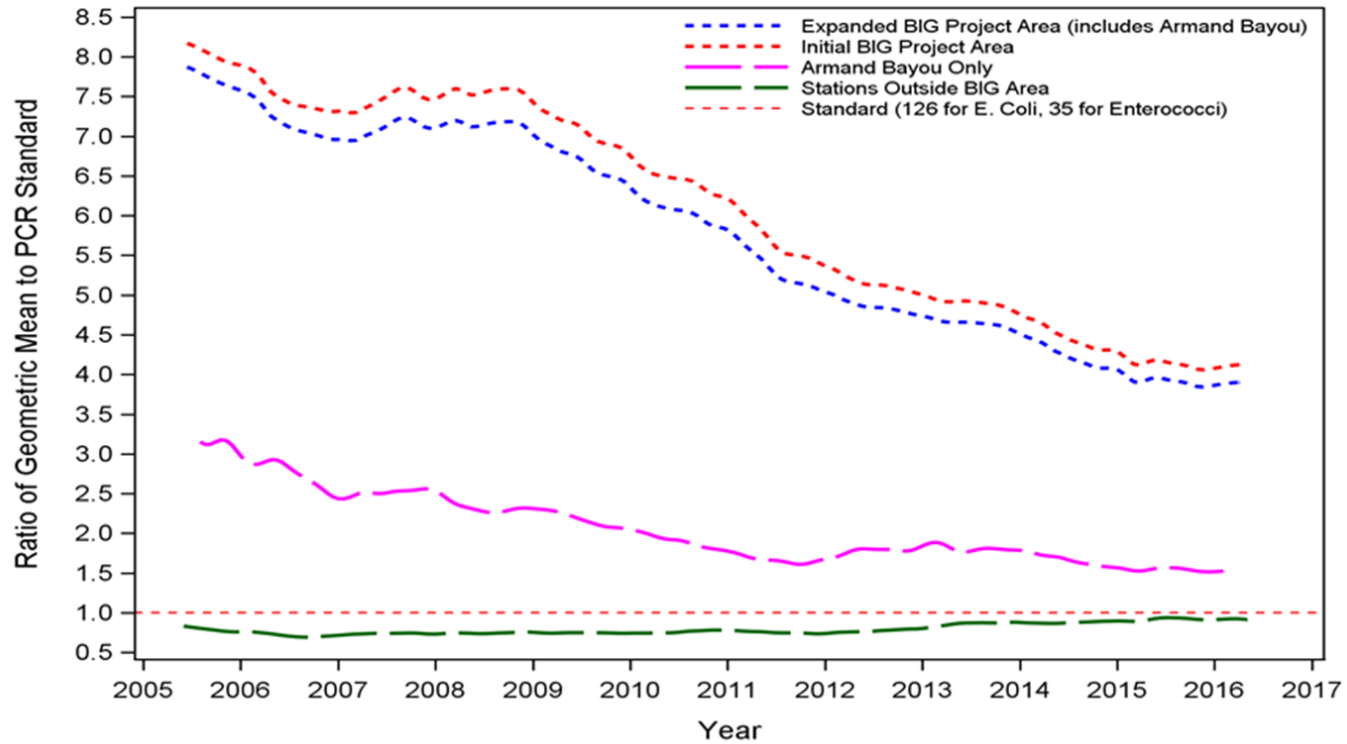
# BIG Annual Report



[Annual Implementation Report](#)

# Bacteria Trend

**Moving Seven-Year Geometric Mean- BIG Area, With and Without Armand Bayou Expressed as Multiple of Primary Contact Recreation Standard**





# WWTFs

Permit Type	Permittees Submitting DMRs in 2015 (TCEQ Data)	Number of Permittees Reporting with <i>E. coli</i> Geomean Limit of 63 MPN/100 mL (TCEQ DMR)	Number of Permittees Reporting with <i>E. Coli</i> Geomean Limit of 126 MPN/100 mL (TCEQ DMR)	Number of Permittees Reporting with Enterococci Geomean Limit of 35 MPN/100mL (TCEQ DMR)	No Bacteria Geomean Limit in H-GAC Permit Database
Industrial	14	9	3	2	0
Muni. Domestic	341	296	37	1	4
Pvt. Domestic	97	91	5	0	1
<b>Total</b>	<b>452</b>	<b>396</b>	<b>45</b>	<b>6</b>	<b>5</b>

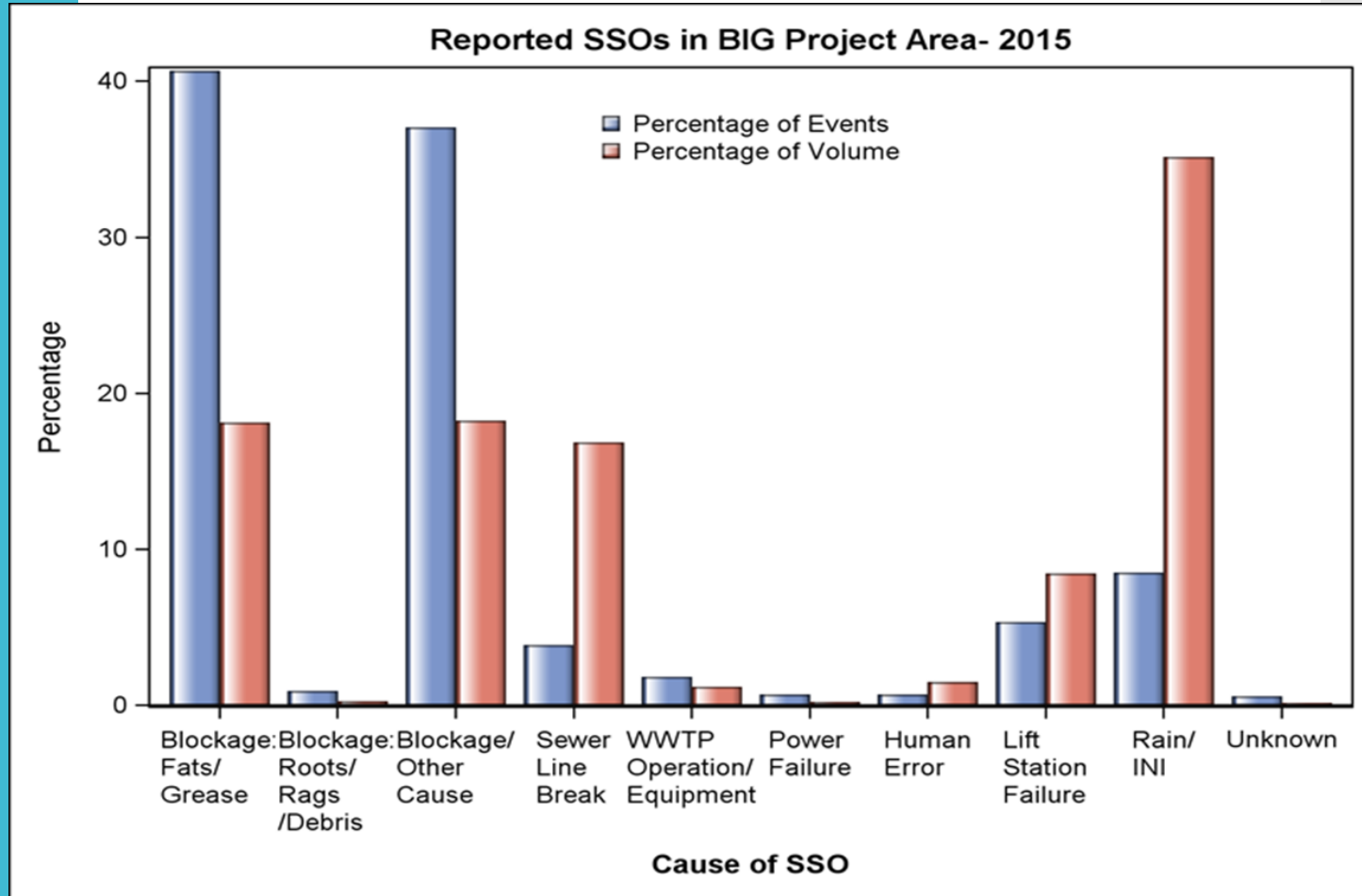
Table 2. BIG project area WWTFs reporting DMRs to the TCEQ in 2015. WWTFs are broken out into type of facility, reporting limits per the permit reviewed either through H-GAC's permit database or the TCEQ's Central Registry. WWTFs with 'No Geomean' submitted data to the TCEQ DMR but as of the date data was pulled for the Annual Report, no limit could be determined.

**Table 3: WWTFs in the BIG Project Area Inspected by Harris County Pollution Control Services**

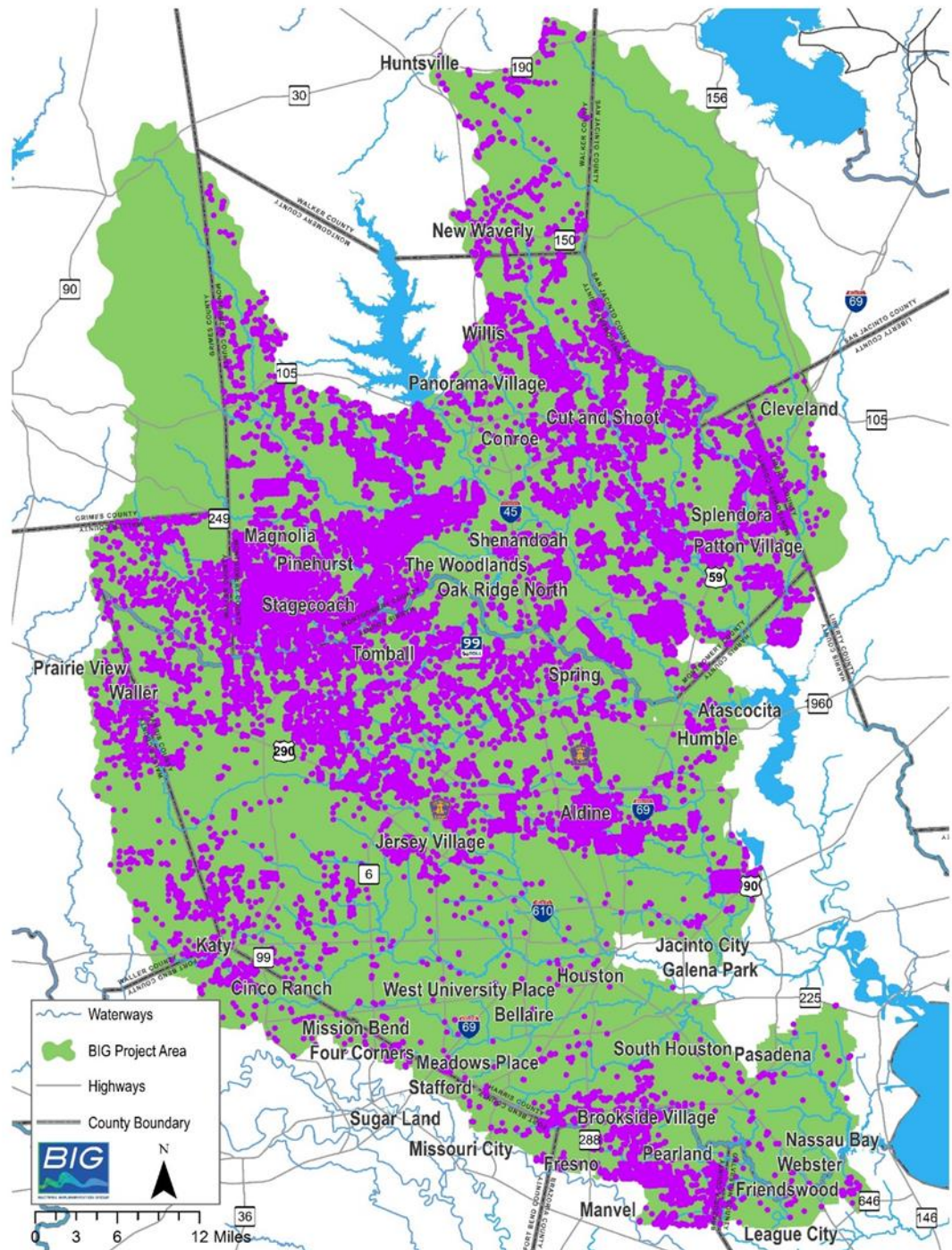
Relative Plant Size/ Permitted (MGD)	Data Source	Number of Highest Single Grab/ Daily Max for WWTF DMR Monitoring Period	Number of Highest Single Grab/Daily Max for WWTF DMR Monitoring Period Meeting Limit	Percentage of Highest Single Grab/ Daily Max for WWTF DMR Monitoring Period Meeting Limit	Data Source	Number of Random Samples Collected	Number of Samples Meeting TCEQ Grab/ Single Sample Limit	Percent HCPCS Samples Meet in TCEQ Permit Limit
<0.1 MGD	DMR	351	342	97.4%	HCPCS	154	129	83.8%
0.1-0.5 MGD	DMR	648	642	99.1%	HCPCS	85	81	95.3%
0.5-1 MGD	DMR	756	739	97.8%	HCPCS	92	91	98.9%
1-5 MGD	DMR	865	828	95.7%	HCPCS	96	90	93.8%
5-10 MGD	DMR	200	193	96.5%	HCPCS	17	17	100.0%
>10 MGD	DMR	156	128	82.1%	HCPCS	14	11	78.6%
<b>Total</b>	<b>DMR</b>	<b>2976</b>	<b>2872</b>	<b>96.5%</b>	<b>HCPCS</b>	<b>458</b>	<b>419</b>	<b>91.5%</b>

Table 5. Domestic WWTFs in Harris County found within the BIG project area reporting to the DMR database that underwent Harris County Pollution Control Services (HCPCS) inspections and that had permit limits at the time of inspection. The random grab sample collected by HCPCS is compared to single grab/daily max samples, number of samples meeting permit limits, and percentage meeting.

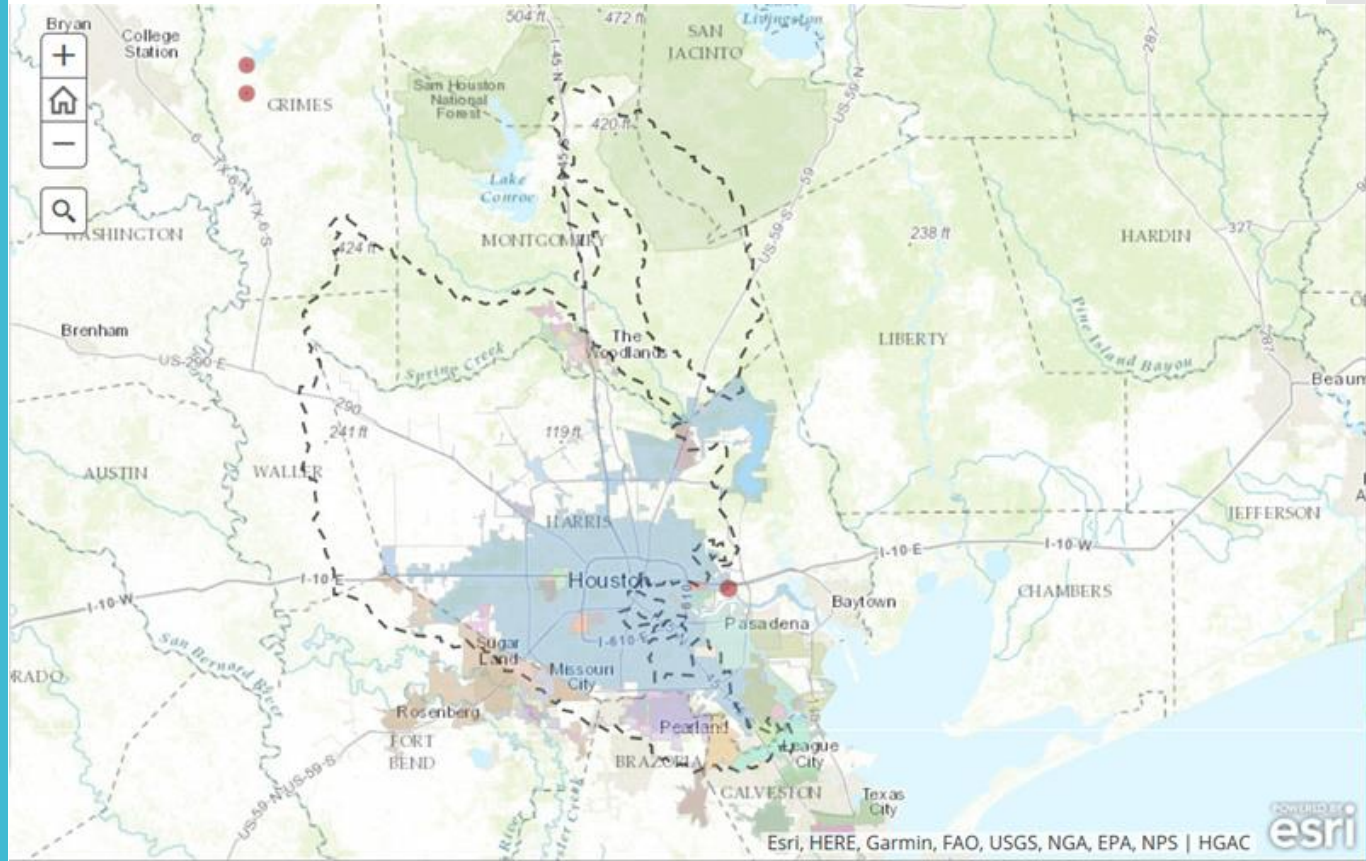
# SSOs



# OSSF

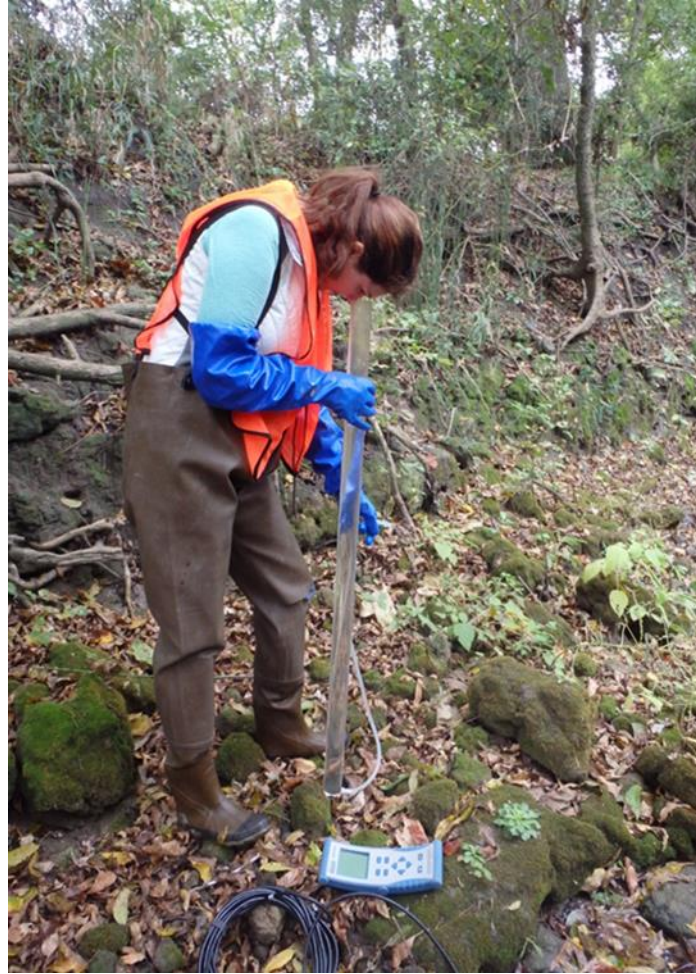


MS4



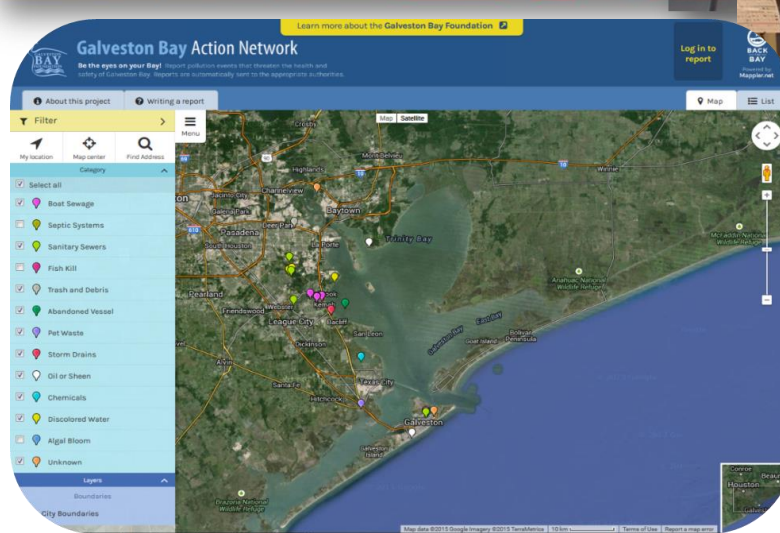


CRP/TST





# Implementation Outreach Education



<http://galvbay.org/how-we-protect-the-bay/in-our-communities/galveston-bay-action-network/>

# Implementation Training



## Real Estate Onsite Sewage Facility (OSSF) Visual Inspection Program



Presented by



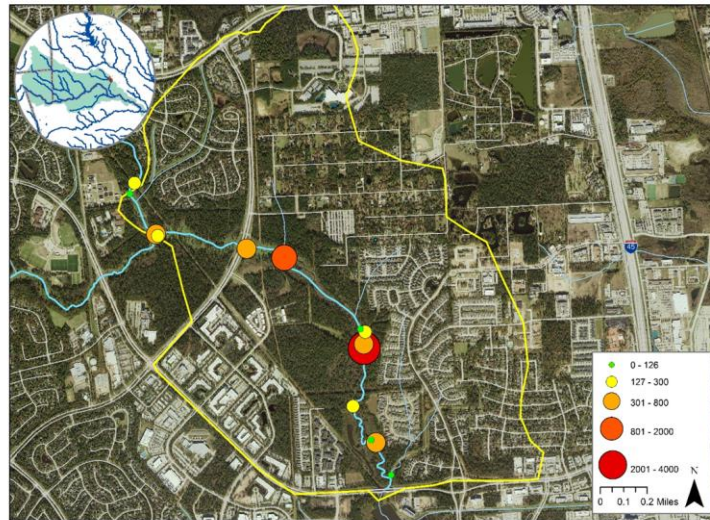
Houston-Galveston  
Area Council



# Implementation IDDE



1008B\_02 Upper Panther Branch Bacteria Counts





Implementation  
OSSF



# Lake Conroe WPP

Completed in May  
2015

Implementation  
Phase -

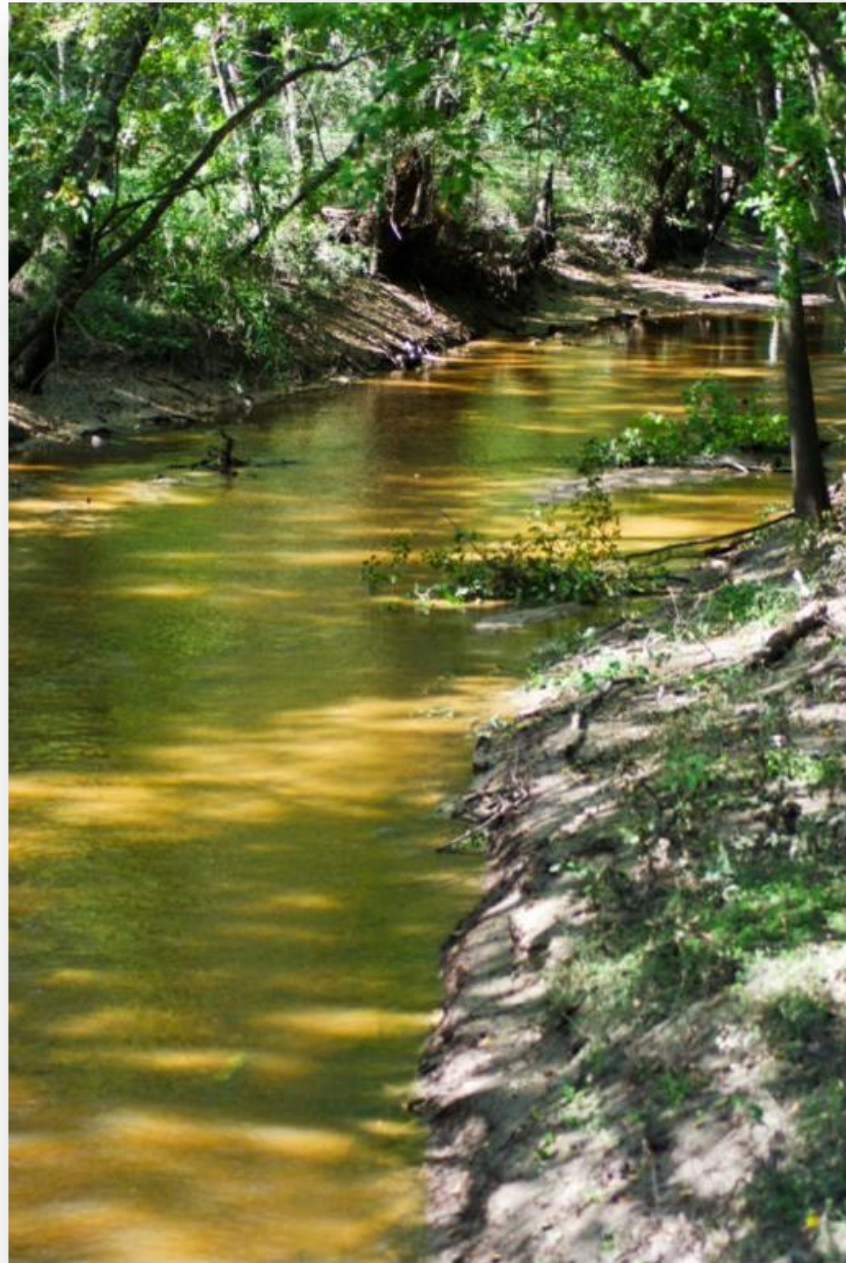
- Continuing Monitoring, Public Education, Solid Waste Management
- Updated OSSF Regulation
- Storm Drain Marking
- OSSF Enforcement





## West Fork WPP

- Partnership between H-GAC, TCEQ, local stakeholders
- 3 year project
- Full WPP for West Fork and Lake Creek
- Preliminary work for Spring/Cypress Creek



# Water Quality Issues

## Impairments

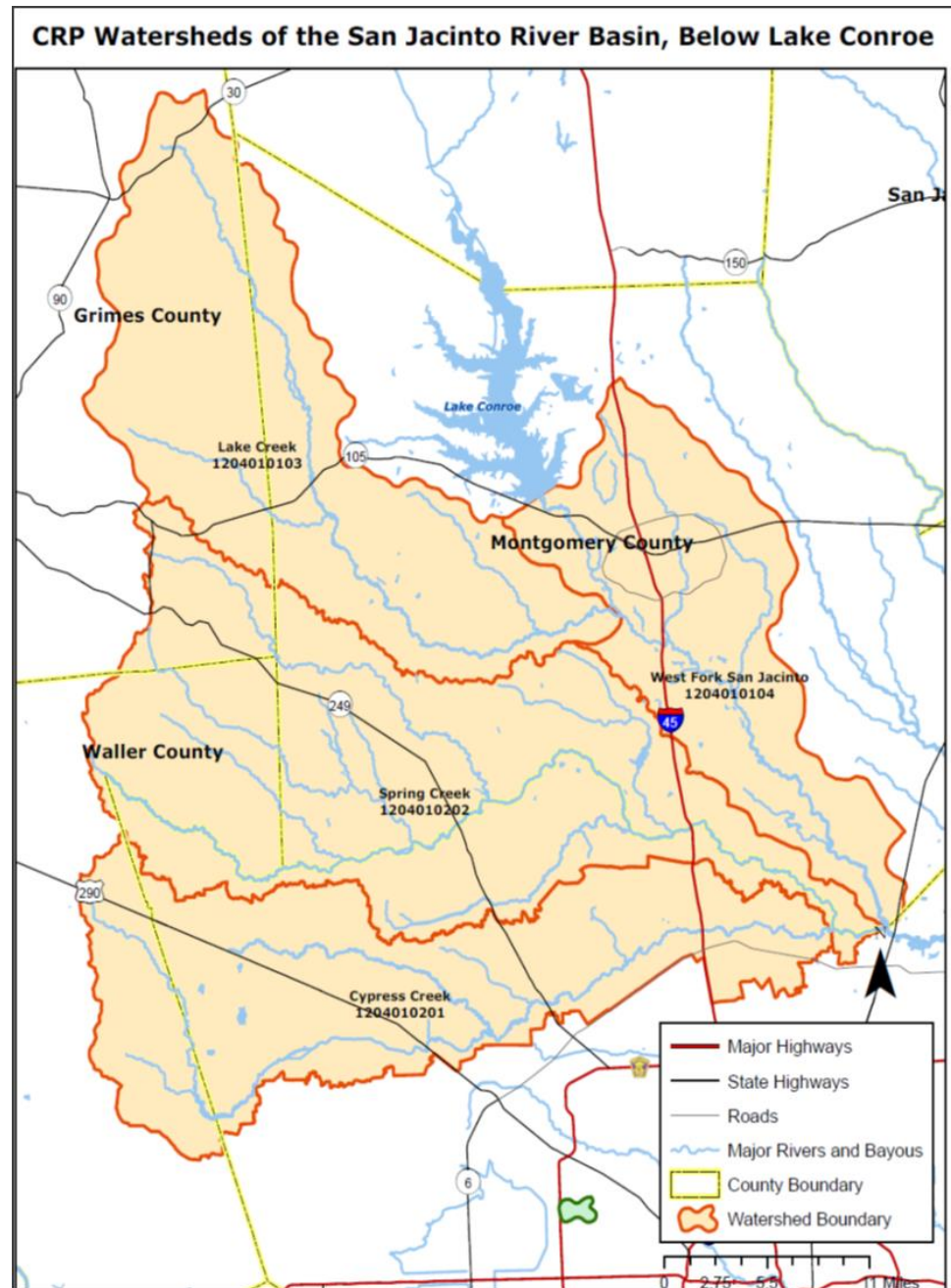
- Elevated fecal bacteria (impairment)

## Concerns

- Depressed DO (Lake Creek)
- Nutrients (West Fork)

## Other issues

- Physical changes/sediment
- Stakeholder concerns



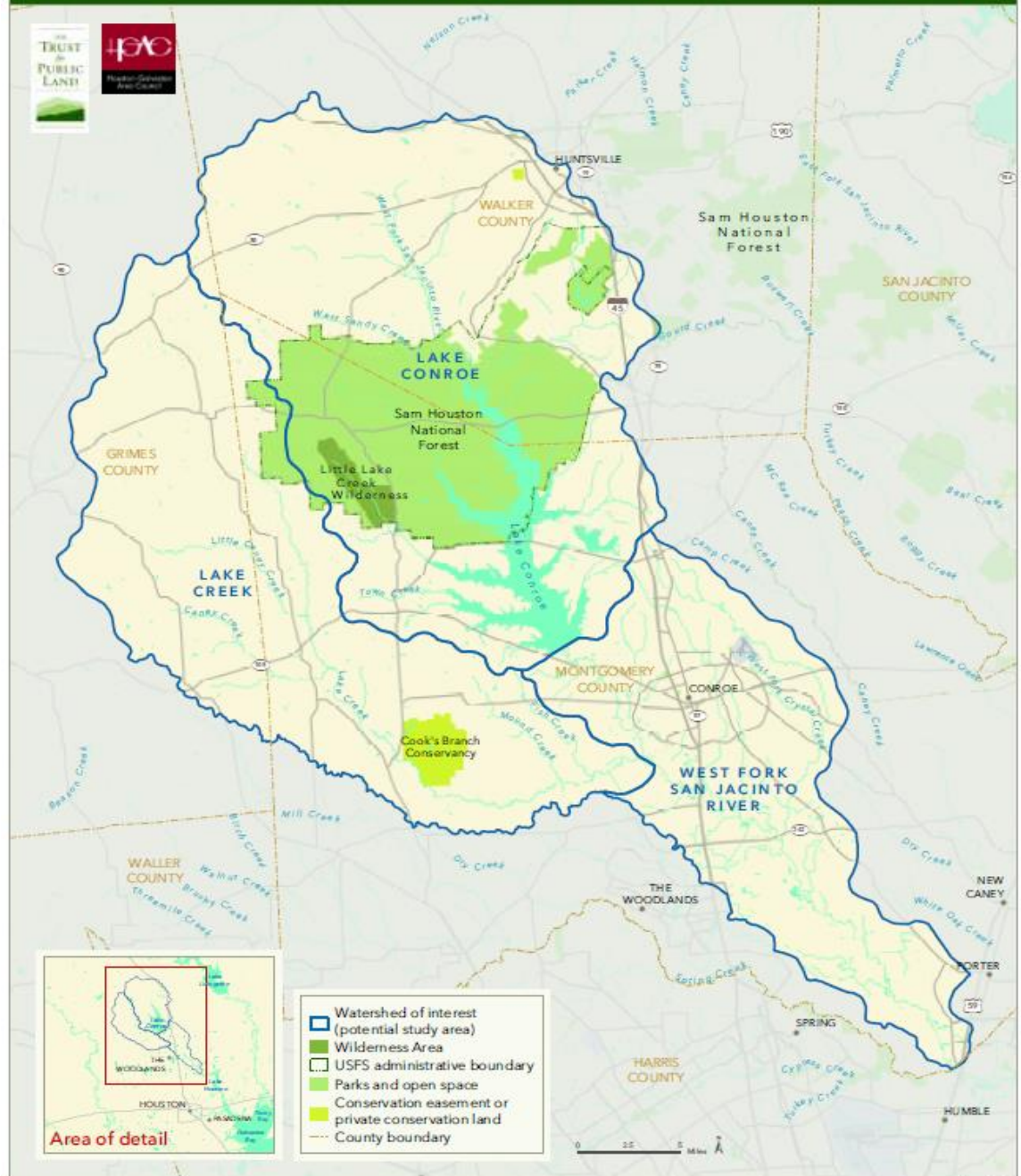


# Status Update

- Completed Modeling.
- Validating Models
- Next Steps –
  - Identify BMPs
  - Implementation
- Next Meeting:  
May 11, 2017



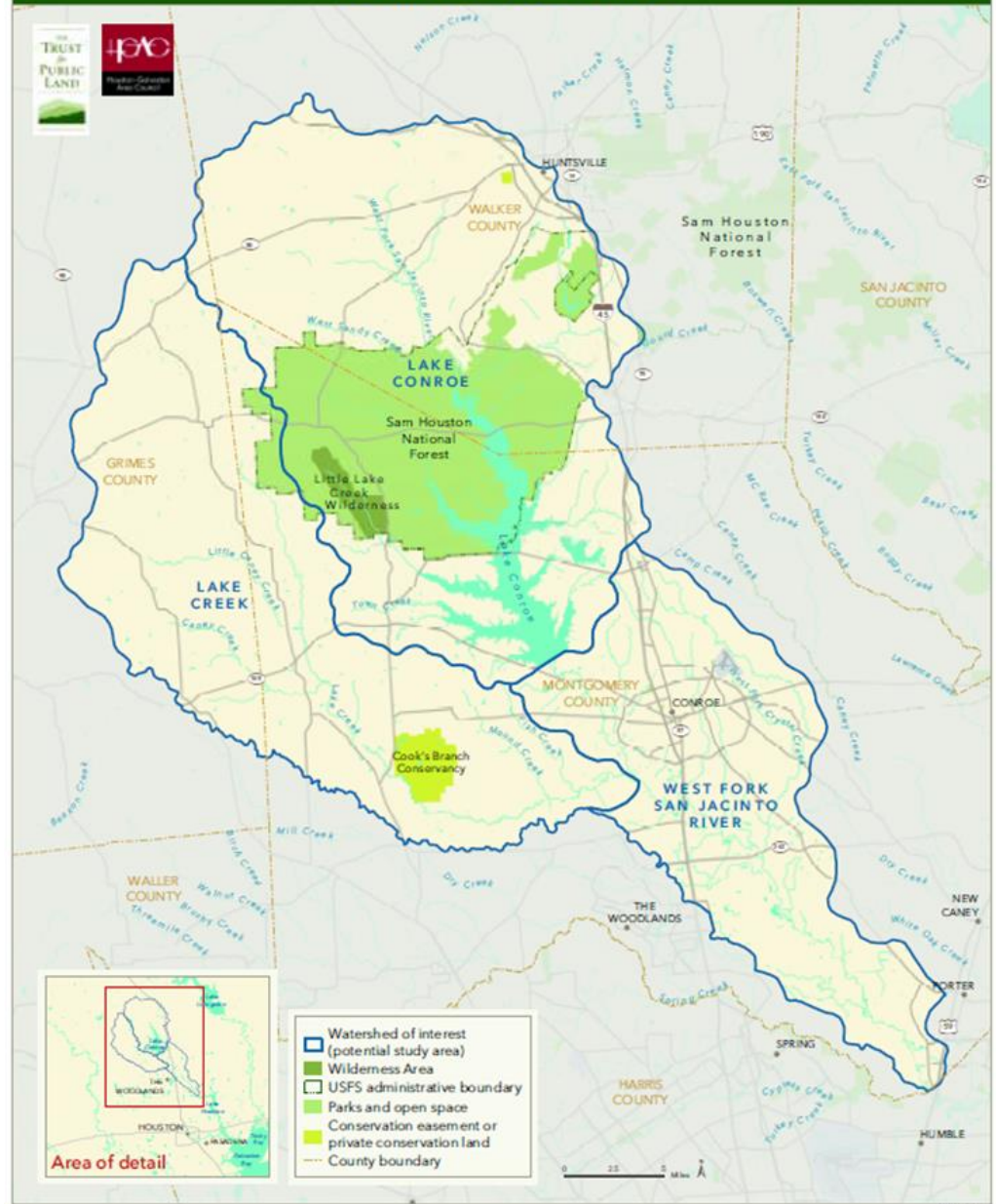
# WEST FORK SAN JACINTO WATERSHED GREENPRINT POTENTIAL STUDY AREA



- Trust for Public Land
- Same area West Fork
- Focus on land conservation for water quality/recreation
- Voluntary, information based project



# WEST FORK SAN JACINTO WATERSHED GREENPRINT POTENTIAL STUDY AREA



- Public input used to create maps
- Products highlight important areas
- Intent is to serve as resource for local decision-makers.



# Next Steps

Steven Johnston  
H-GAC  
832.681.2579  
[steven.johnston@h-gac.com](mailto:steven.johnston@h-gac.com)

