

HOUSTON-GALVESTON AREA COUNCIL



Temporary Pedestrian/Bicycle Counters Data Summary

Deployment Summary	
Sponsoring Agency	Westchase District
Deployment Period	Thursday, July 7, 2016 (12:00 p.m.) – Tuesday, July 19, 2016 (12:00 a.m.)
Number of Counters Deployed	11
Facility Description	Library Loop Trail and Sidewalks along Walnut Bend Lane
Locations Deployed (Houston-Galveston Area Council and Texas Transportation Institute)	
Counter H1	Library Loop Trail South at Richmond Avenue (West of Ditch)
Counter H2	Library Loop Trail South at Richmond Avenue (East of Ditch)
Counter H3	Library Loop Trail South at Rogerdale Road
Counter H4	Library Loop Trail North at Rogerdale Road
Counter H6	Library Loop Trail North at Meadowchase Apartments
Counter H7	Library Loop Trail North at Walnut Bend Lane
Counter H5	Library Loop Trail near Robinson-Westchase Neighborhood Library
Counter T1	Walnut Bend Lane Northbound North of Westpark Drive
Counter T2	Walnut Bend Lane Northbound South of Richmond Avenue
Counter T3	Walnut Bend Lane Southbound South of Richmond Avenue
Counter T4	Walnut Bend Lane Northbound South of Westheimer Road
Counter T5	Walnut Bend Lane Southbound South of Westheimer Road

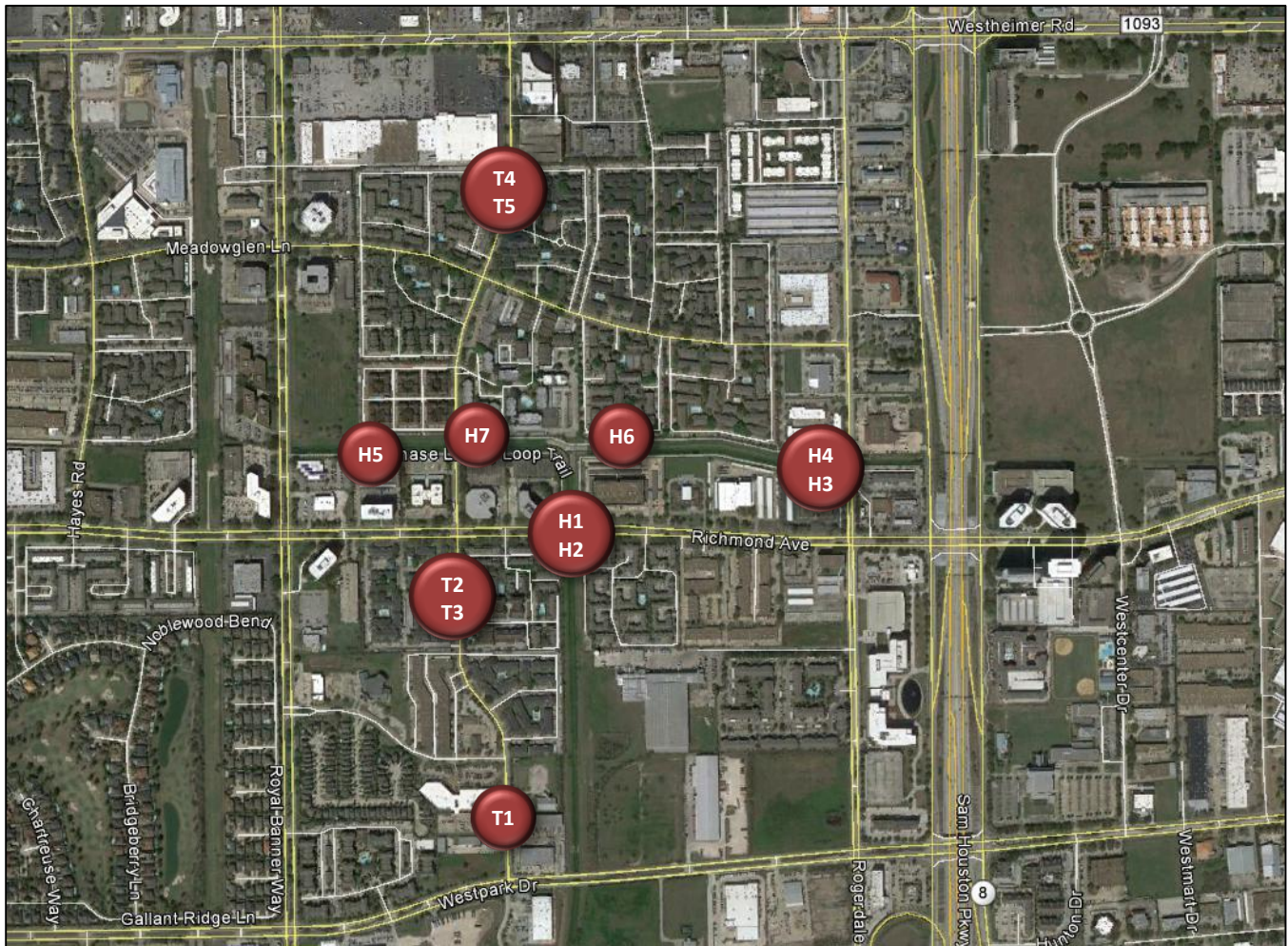
About the Temporary Pedestrian/Bicycle Counters

The Houston-Galveston Area Council (H-GAC) has temporary counters (TRAFx Infrared Trail Counters: Generation III) that can be borrowed by local governments and transportation agencies to count the number of people using off-street pedestrian and bicycle facilities. Infrared technology is used to count the number of people passing the counter. The counters do not differentiate between pedestrians and bicyclists, but count the total number of users.

The Texas Transportation Institute (TTI) owns additional temporary counters that it deploys along off-street pedestrian and bicycle facilities statewide.

Counter Locations

Library Loop Trail + Walnut Bend Lane in Westchase District



Counter	Location	Total Users	Average Daily Usage	Report Page Num.
H1	Library Loop Trail South at Richmond Avenue (West of Ditch)	600	52	5
H2	Library Loop Trail South at Richmond Avenue (East of Ditch)	941	82	9
H3	Library Loop Trail South at Rogerdale Road	793	69	13
H4	Library Loop Trail North at Rogerdale Road	1,522	132	17
H6	Library Loop Trail North at Meadowchase Apartments	1,009	88	21
H7	Library Loop Trail North at Walnut Bend Lane	N/A*	N/A*	25
H5	Library Loop Trail South near Robinson-Westchase Neighborhood Library	806	70	27
T1	Walnut Bend Lane Northbound North of Westpark Drive	128	11	31
T2	Walnut Bend Lane Northbound South of Richmond Avenue	908	79	35
T3	Walnut Bend Lane Southbound South of Richmond Avenue	659	57	39
T4	Walnut Bend Lane Northbound South of Westheimer Road	760	66	43
T5	Walnut Bend Lane Southbound South of Westheimer Road	2,377	207	47

*Counter H7 malfunctioned and did not collect data during the deployment period.

Pedestrian/Bicycle Activity along Library Loop Trail

The Library Loop Trail in Houston’s Westchase District is about 1.35 miles long. This shared-use path runs parallel to a waterway (Ditch D124-00-00 and Ditch D124-01-00) north of Richmond Avenue, between Wilcrest Drive and Rogerdale Road. The Westchase District plans to complete the Brays Bayou Connector Trail in late 2016, which will allow users to travel south from the Library Loop Trail to Brays Bayou using off-road pedestrian/bicycle facilities.



During the deployment period, seven temporary pedestrian/bicycle counters were placed along the Library Loop Trail to measure usage of the facility. Usage tends to be higher along Library Loop Trail North (north of Ditch D124-00-00 and Ditch D124-01-00) than along Library Loop South (south of Ditch D124-00-00 and Ditch D124-01-00).

Counter	Location	Total Users	Avg. Daily Usage	Avg. Daily Usage (Weekdays)	Avg. Daily Usage (Weekends)
H1	Library Loop Trail South at Richmond Avenue (West of Ditch)	600	52	57	44
H2	Library Loop Trail South at Richmond Avenue (East of Ditch)	941	82	94	60
H3	Library Loop Trail South at Rogerdale Road	793	69	76	55
H4	Library Loop Trail North at Rogerdale Road	1,522	132	142	115
H6	Library Loop Trail North at Meadowchase Apartments	1,009	88	91	82
H7	Library Loop Trail North at Walnut Bend Lane	N/A*	N/A*	N/A*	N/A*
H5	Library Loop Trail South near Robinson-Westchase Neighborhood Library	806	70	79	54

*Counter H7 malfunctioned and did not collect data during the deployment period.

Pedestrian Activity along Walnut Bend Lane

Funding has been allocated in the Houston-Galveston Area Council’s 2017 – 2020 Transportation Improvement Program (TIP) to reconstruct Walnut Bend Lane between Westheimer Road and Westpark Drive. New sidewalks, pedestrian ramps, lighting, landscaping, and other improvements are planned and expected in FY2018.

To collect data on pedestrian usage prior to these improvements, counters were placed on sidewalks along Walnut Bend Lane near Westpark Drive, Richmond Avenue, and Westheimer Road. Placing counters on both sides of the roadway created a *screen line*, which helps determine how many pedestrians and cyclists are moving through an area (using off-street facilities). While sidewalks are on both sides of Walnut Bend Lane near Richmond Avenue and Westheimer Road, they currently only exist along the northbound lanes of Walnut Bend Lane near Westpark Drive.

Sidewalks along Walnut Bend Lane tend to be busier on weekdays than during weekends. Usage was highest near Westheimer Road and decreases as one moves south along the corridor.

Location	Counter	Facility Type	Total Users	Avg. Daily Usage	Avg. Daily Usage (Weekdays)	Avg. Daily Usage (Weekends)
Walnut Bend Lane North of Westpark Drive*	T1	Sidewalk (Adj. to Northbound Lanes)	128	11	13	8
Walnut Bend Lane South of Richmond Avenue	T2	Sidewalk (Adj. to Northbound Lanes)	908	79	87	64
	T3	Sidewalk (Adj. to Southbound Lanes)	659	57	63	48
	Total Pedestrians/Cyclists in Area (Counter T2 + Counter T3)		1,567	136	150	112
Walnut Bend Lane South of Westheimer Road	T4	Sidewalk (Adj. to Northbound Lanes)	760	66	74	52
	T5	Sidewalk (Adj. to Southbound Lanes)	2,377	207	228	167
	Total Pedestrians/Cyclists in Area (Counter H7 + Counter T3)		3,137	273	302	219

*There are no sidewalks along Walnut Bend Lane Southbound between Westpark Drive and Wilcrest Green Drive.

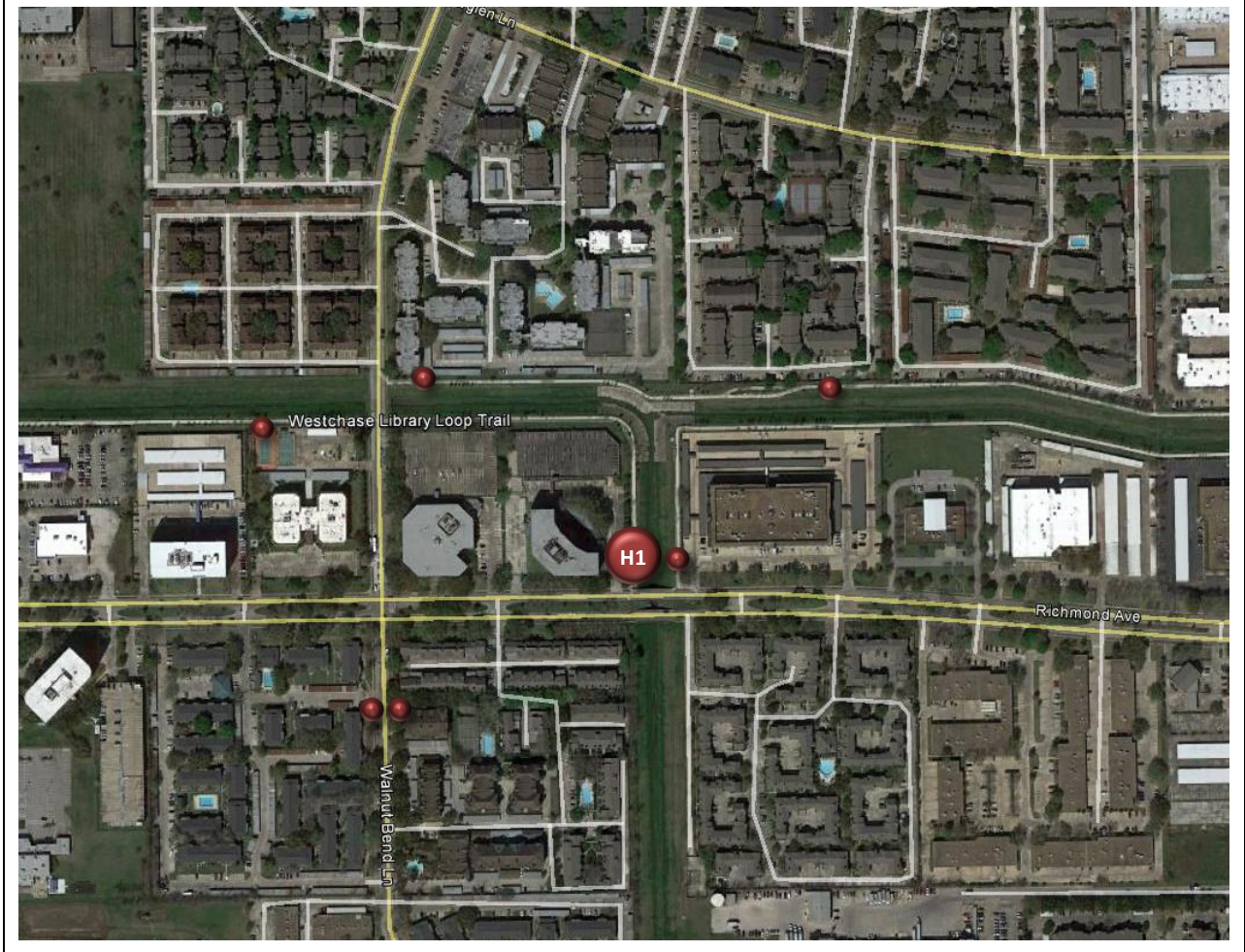
Counter H1

Library Loop Trail South at Richmond Avenue (West of Ditch)

Location Information		
Location Name	Library Loop Trail South at Richmond Avenue (West of Ditch)	
Location Description	Library Loop Trail (Shared-Use Path) at Richmond Avenue West of Ditch (D124-00-00)	
Jurisdiction	City of Houston/Westchase District	
Agency Deployed	Westchase District	
GPS Coordinates	29°43'41.48"N, 95°33'57.00"W	
Surrounding Land Uses	North	Office, Multi-Family Residential
	South	Office, Multi-Family Residential
	East	Office, Multi-Family Residential
	West	Office, Multi-Family Residential
What object was device secured to?	Tree	
Sidewalk Width	10'	
Buffer Width	N/A (Off-Road Shared-Use Path)	
Street Width	N/A (Off-Road Shared-Use Path)	
Parallel Parking	N/A (Off-Road Shared-Use Path)	
Landscaping or Trees	Yes	
Sidewalk Pavement Type	Concrete	
ADA Ramps	Yes	
Sidewalk Condition	Excellent	
Speed Limit	N/A (Off-Road Shared-Use Path)	
Street Lighting	No	
Street Traffic Volume	N/A (Off-Road Shared-Use Path)	
Transit	Yes (METRO Bus Stop 300' East at 10700 Richmond Avenue)	
Shade	Intermittent	
Have counts been collected by H-GAC at this location before?	No	

Trends
<ul style="list-style-type: none"> • Usage tends to be higher on weekdays (57 users/day) than during weekends (44 users/day). • On weekdays, usage peaks in the morning (7:00 a.m. – 8:00 a.m.) and evening (7:00 p.m. – 9:00 p.m.). • During weekends, usage is highest in the morning (7:00 a.m. – 9:00 a.m.).

Location Information: Map



Location Information: Photos



Image 1: Library Loop Trail South at Richmond Avenue (West of Ditch) Facing North

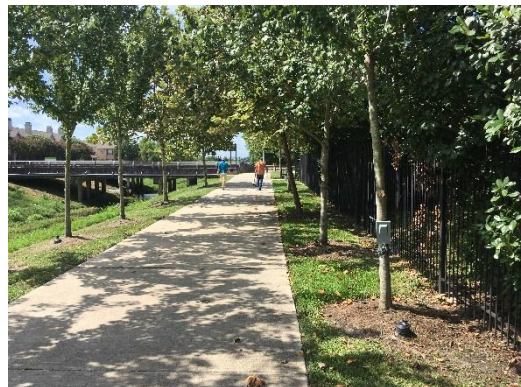
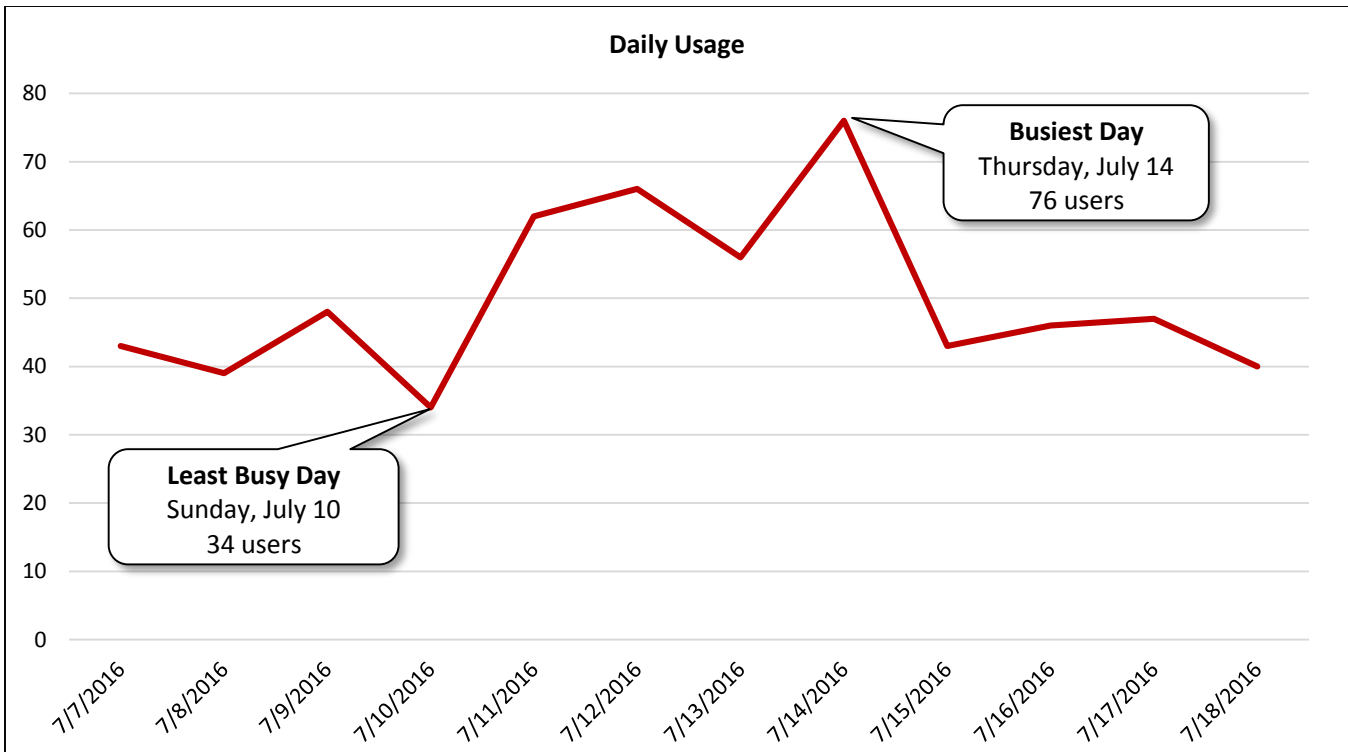


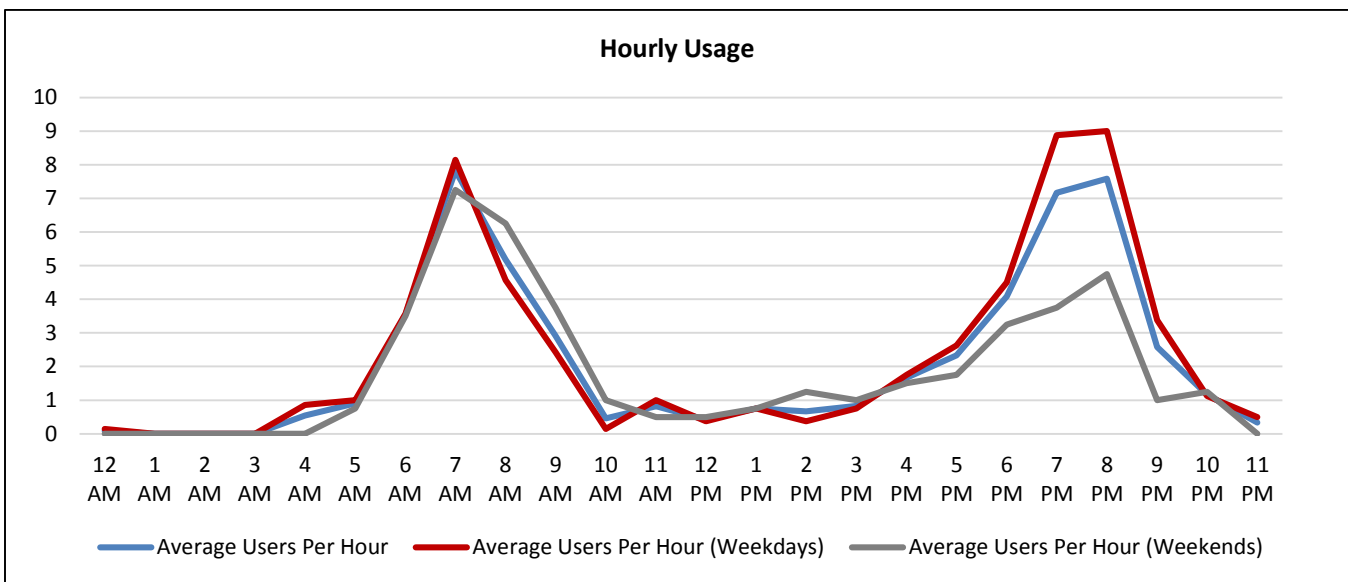
Image 2: Library Loop Trail South at Richmond Avenue (West of Ditch) Facing South

Daily Usage Library Loop Trail South at Richmond Avenue (West of Ditch)				
Date	Users	Select Weather Data*		
		High Temperature (°F)	Low Temperature (°F)	Precipitation (inches)
Thursday, July 7, 2016 (beginning at 12:00 p.m.)	43	95	79	0
Friday, July 8, 2016	39	95	79	0
Saturday, July 9, 2016	48	95	75	0.03
Sunday, July 10, 2016	34	93	77	0
Monday, July 11, 2016	62	95	79	0
Tuesday, July 12, 2016	66	96	77	0
Wednesday, July 13, 2016	56	95	79	0
Thursday, July 14, 2016	76	96	78	0
Friday, July 15, 2016	43	98	77	0
Saturday, July 16, 2016	46	96	73	0
Sunday, July 17, 2016	47	93	75	0.03
Monday, July 18, 2016	40	93	75	0
Total	600			
Average Daily Usage	52			
Average Daily Usage (Weekday)	57			
Average Daily Usage (Weekend)	44			
		Notes		
		Counter H1 began collecting data at 12:00 p.m. on Thursday, July 7, 2016.		

*Weather conditions recorded at KSGR.



Hourly Usage Library Loop Trail South at Richmond Avenue (West of Ditch)			
Time of Day	Average Users Per Hour	Average Users Per Hour (Weekdays)	Average Users Per Hour (Weekends)
12:00 a.m.	0.1	0.1	0.0
1:00 a.m.	0.0	0.0	0.0
2:00 a.m.	0.0	0.0	0.0
3:00 a.m.	0.0	0.0	0.0
4:00 a.m.	0.5	0.9	0.0
5:00 a.m.	0.9	1.0	0.8
6:00 a.m.	3.5	3.6	3.5
7:00 a.m.	7.8	8.1	7.3
8:00 a.m.	5.2	4.6	6.3
9:00 a.m.	2.9	2.4	3.8
10:00 a.m.	0.5	0.1	1.0
11:00 a.m.	0.8	1.0	0.5
12:00 p.m.	0.4	0.4	0.5
1:00 p.m.	0.8	0.8	0.8
2:00 p.m.	0.7	0.4	1.3
3:00 p.m.	0.8	0.8	1.0
4:00 p.m.	1.7	1.8	1.5
5:00 p.m.	2.3	2.6	1.8
6:00 p.m.	4.1	4.5	3.3
7:00 p.m.	7.2	8.9	3.8
8:00 p.m.	7.6	9.0	4.8
9:00 p.m.	2.6	3.4	1.0
10:00 p.m.	1.2	1.1	1.3
11:00 p.m.	0.3	0.5	0.0



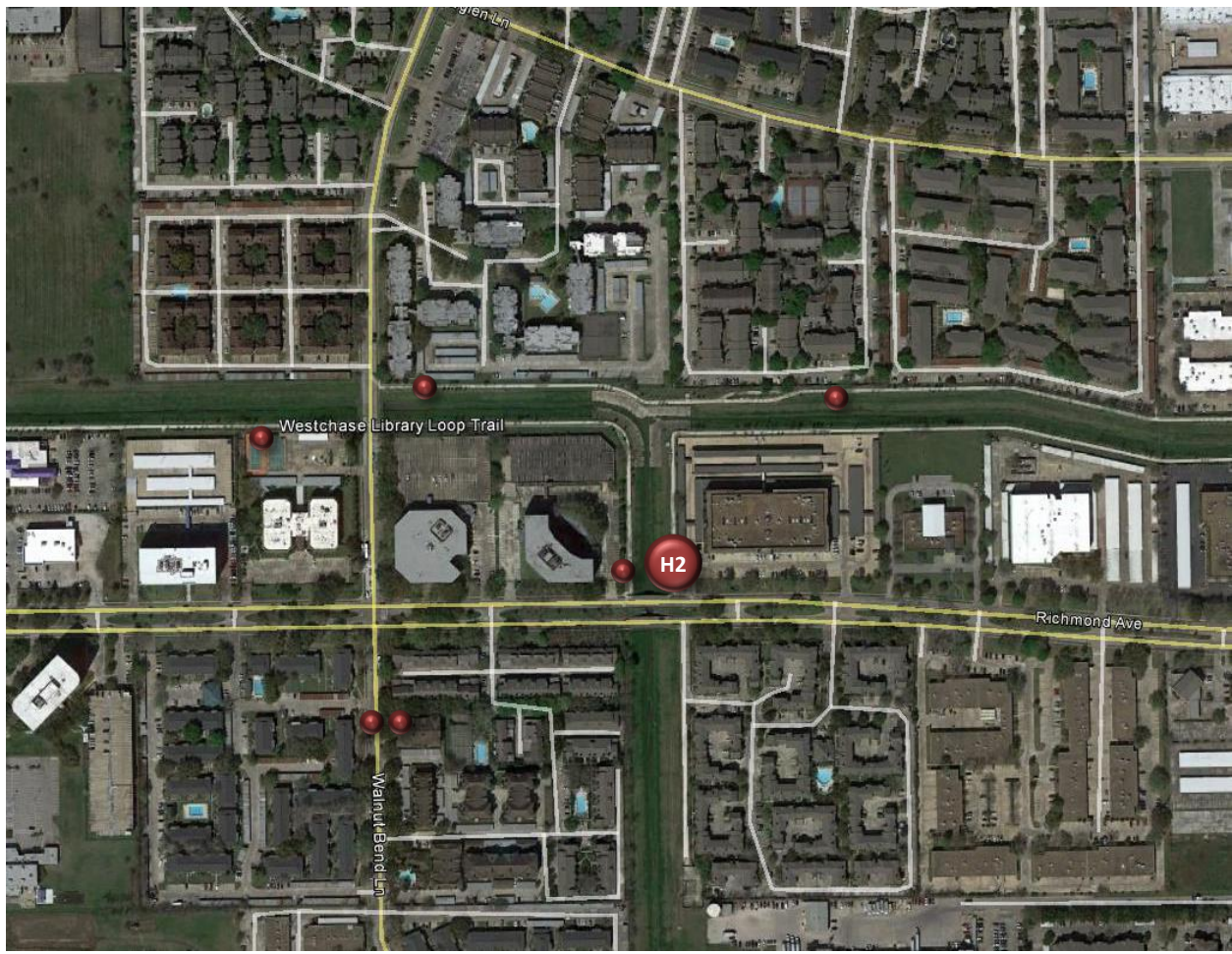
Counter H2

Library Loop Trail South at Richmond Avenue (East of Ditch)

Location Information		
Location Name	Library Loop Trail South at Richmond Avenue (East of Ditch)	
Location Description	Library Loop Trail (Shared-Use Path) at Richmond Avenue East of Ditch (D124-00-00)	
Jurisdiction	City of Houston/Westchase District	
Agency Deployed	Westchase District	
GPS Coordinates	29°43'41.44"N, 95°33'55.47"W	
Surrounding Land Uses	North	Office, Multi-Family Residential
	South	Office, Multi-Family Residential
	East	Office, Multi-Family Residential
	West	Office, Multi-Family Residential
What object was device secured to?	Tree	
Sidewalk Width	10'	
Buffer Width	N/A (Off-Road Shared-Use Path)	
Street Width	N/A (Off-Road Shared-Use Path)	
Parallel Parking	N/A (Off-Road Shared-Use Path)	
Landscaping or Trees	Yes	
Sidewalk Pavement Type	Concrete	
ADA Ramps	Yes	
Sidewalk Condition	Excellent	
Speed Limit	N/A (Off-Road Shared-Use Path)	
Street Lighting	No	
Street Traffic Volume	N/A (Off-Road Shared-Use Path)	
Transit	Yes (METRO Bus Stop 100' South at 10700 Richmond Avenue)	
Shade	Intermittent	
Have counts been collected by H-GAC at this location before?	No	

Trends
<ul style="list-style-type: none"> • Usage tends to be much higher on weekdays (94 users/day) than during weekends (60 users/day). • On weekdays, usage is highest in the evening (7:00 p.m. – 9:00 p.m.). • During weekends, usage peaks in the morning (7:00 a.m. – 9:00 a.m.) and evening (7:00 p.m. – 9:00 p.m.).

Location Information: Map



Location Information: Photos



Image 3: Library Loop Trail South at Richmond Avenue (East of Ditch) Facing North

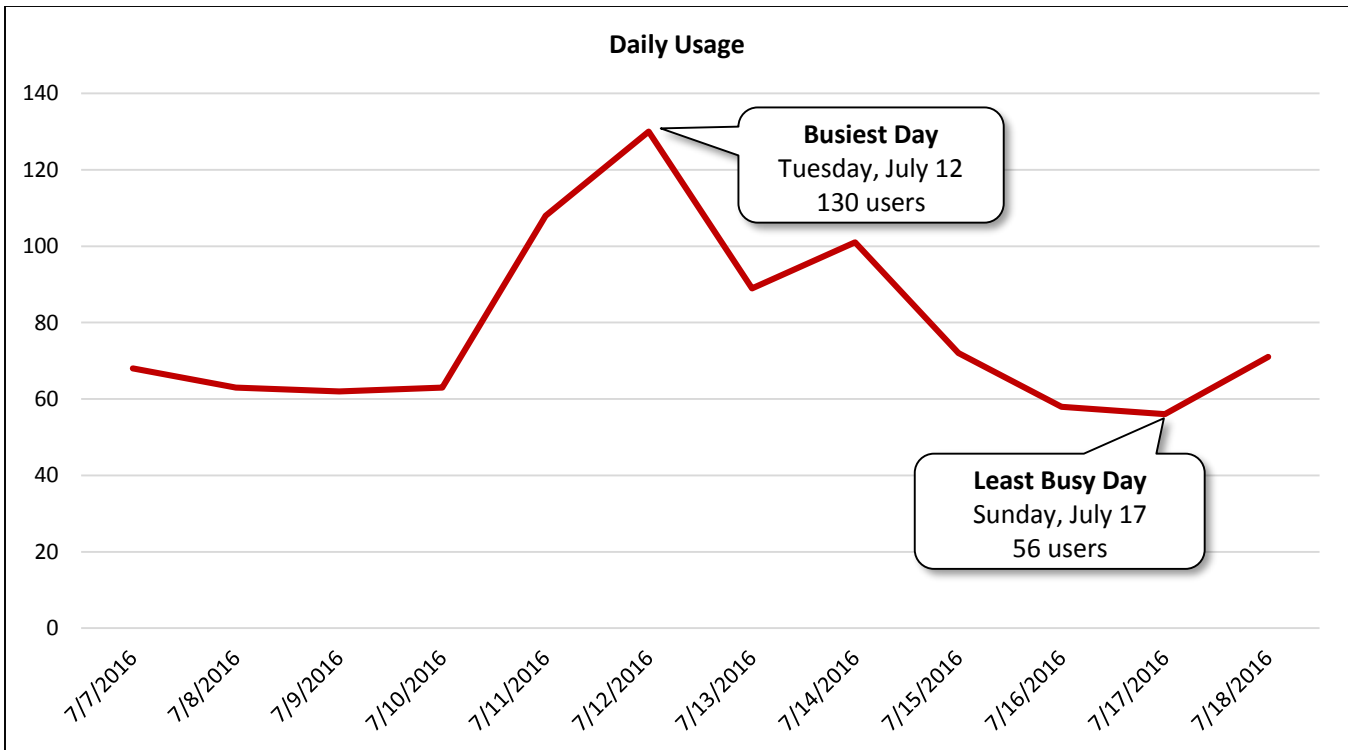


Image 4: Library Loop Trail South at Richmond Avenue (East of Ditch) Facing South

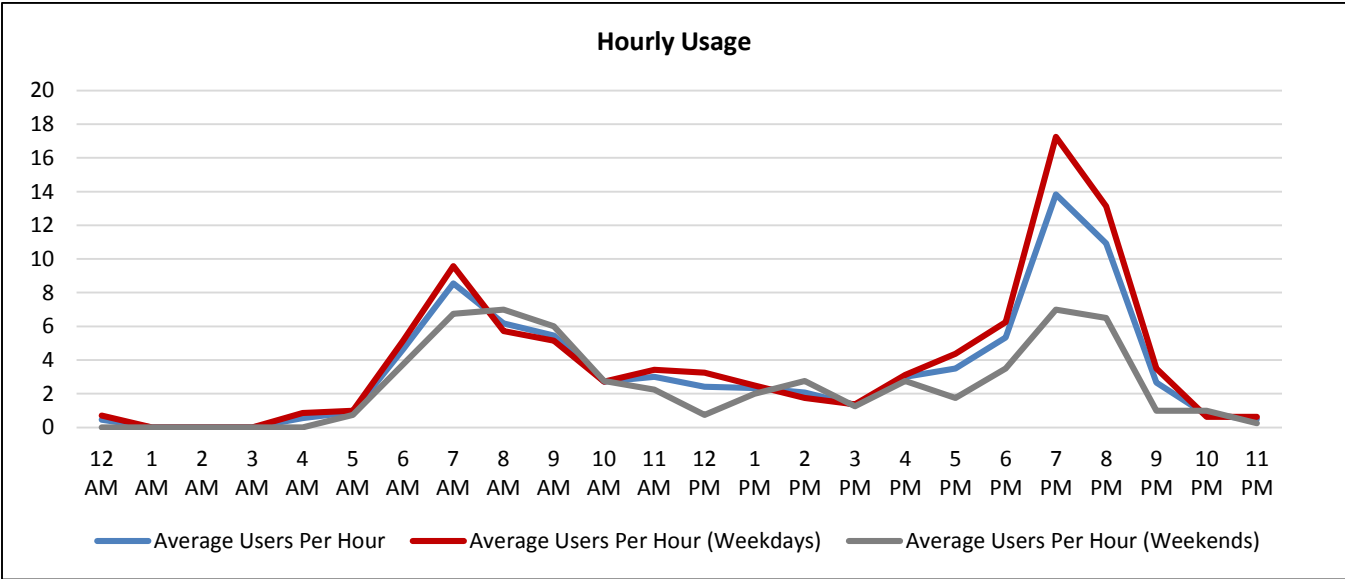
Daily Usage Library Loop Trail South at Richmond Avenue (East of Ditch)				
Date	Users	Select Weather Data*		
		High Temperature (°F)	Low Temperature (°F)	Precipitation (inches)
Thursday, July 7, 2016 (beginning at 12:00 p.m.)	68	95	79	0
Friday, July 8, 2016	63	95	79	0
Saturday, July 9, 2016	62	95	75	0.03
Sunday, July 10, 2016	63	93	77	0
Monday, July 11, 2016	108	95	79	0
Tuesday, July 12, 2016	130	96	77	0
Wednesday, July 13, 2016	89	95	79	0
Thursday, July 14, 2016	101	96	78	0
Friday, July 15, 2016	72	98	77	0
Saturday, July 16, 2016	58	96	73	0
Sunday, July 17, 2016	56	93	75	0.03
Monday, July 18, 2016	71	93	75	0
Total	941			
Average Daily Usage	82			
Average Daily Usage (Weekday)	94			
Average Daily Usage (Weekend)	60			

Notes	
Counter H2 began collecting data at 12:00 p.m. on Thursday, July 7, 2016.	

*Weather conditions recorded at KSGR.



Hourly Usage			
Library Loop Trail South at Richmond Avenue (East of Ditch)			
Time of Day	Average Users Per Hour	Average Users Per Hour (Weekdays)	Average Users Per Hour (Weekends)
12:00 a.m.	0.5	0.7	0.0
1:00 a.m.	0.0	0.0	0.0
2:00 a.m.	0.0	0.0	0.0
3:00 a.m.	0.0	0.0	0.0
4:00 a.m.	0.5	0.9	0.0
5:00 a.m.	0.9	1.0	0.8
6:00 a.m.	4.6	5.1	3.8
7:00 a.m.	8.5	9.6	6.8
8:00 a.m.	6.2	5.7	7.0
9:00 a.m.	5.5	5.1	6.0
10:00 a.m.	2.7	2.7	2.8
11:00 a.m.	3.0	3.4	2.3
12:00 p.m.	2.4	3.3	0.8
1:00 p.m.	2.3	2.5	2.0
2:00 p.m.	2.1	1.8	2.8
3:00 p.m.	1.3	1.4	1.3
4:00 p.m.	3.0	3.1	2.8
5:00 p.m.	3.5	4.4	1.8
6:00 p.m.	5.3	6.3	3.5
7:00 p.m.	13.8	17.3	7.0
8:00 p.m.	10.9	13.1	6.5
9:00 p.m.	2.7	3.5	1.0
10:00 p.m.	0.8	0.6	1.0
11:00 p.m.	0.5	0.6	0.3



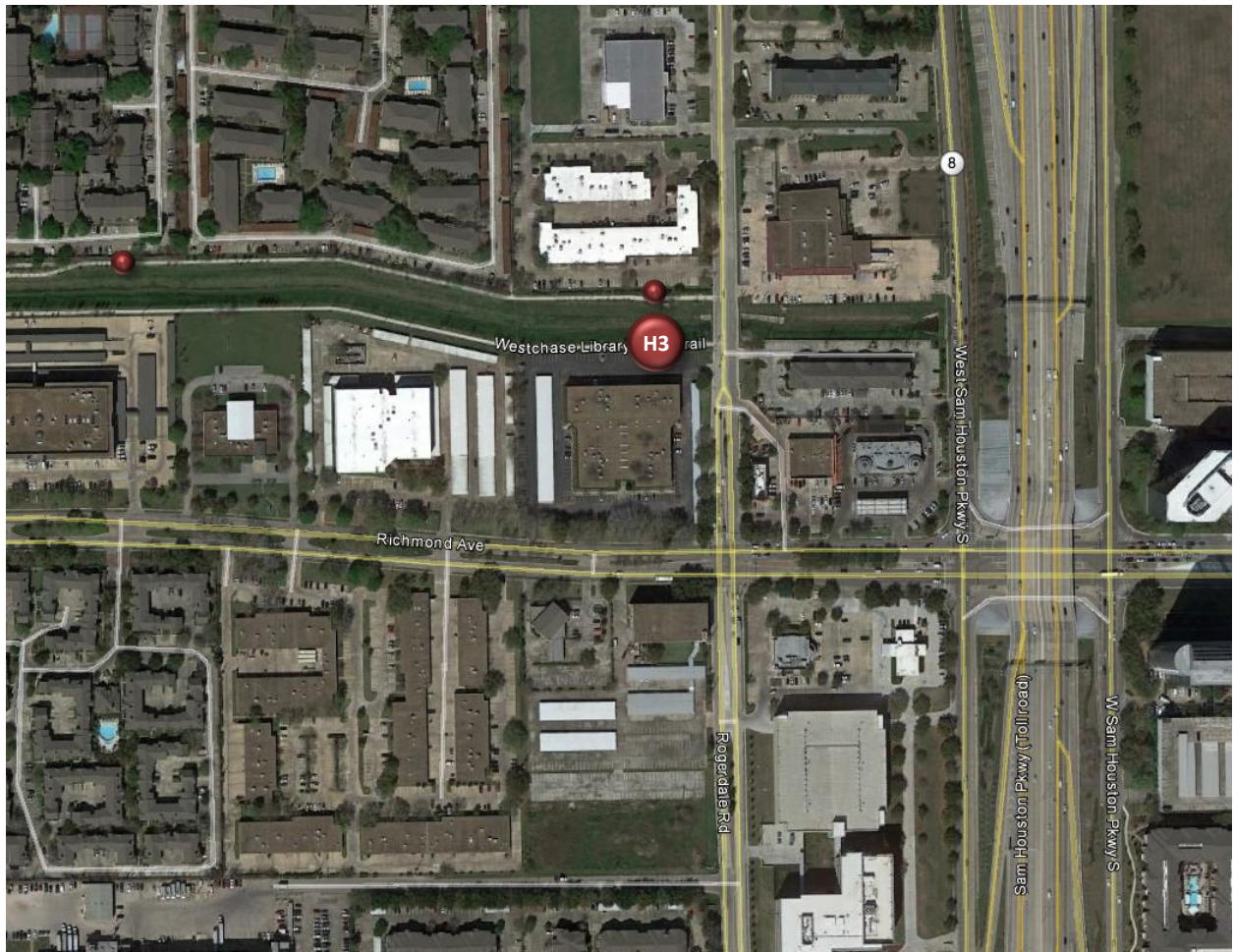
Counter H3

Library Loop Trail South at Rogerdale Road

Location Information		
Location Name	Library Loop Trail South at Rogerdale Road	
Location Description	Library Loop Trail (Shared-Use Path) South of Ditch (D124-01-00) West of Rogerdale Road	
Jurisdiction	City of Houston/Westchase District	
Agency Deployed	Westchase District	
GPS Coordinates	29°43'44.22"N, 95°33'36.60"W	
Surrounding Land Uses	North	Office, Retail
	South	Office
	East	Institutional (Post Office), Hotel, Retail
	West	Office, Multi-Family Residential
What object was device secured to?	Tree	
Sidewalk Width	8'	
Buffer Width	N/A (Off-Road Shared-Use Path)	
Street Width	N/A (Off-Road Shared-Use Path)	
Parallel Parking	N/A (Off-Road Shared-Use Path)	
Landscaping or Trees	Yes	
Sidewalk Pavement Type	Concrete	
ADA Ramps	Yes	
Sidewalk Condition	Excellent	
Speed Limit	N/A (Off-Road Shared-Use Path)	
Street Lighting	No	
Street Traffic Volume	N/A (Off-Road Shared-Use Path)	
Transit	Yes (METRO Bus Stops 450' South at Richmond Avenue/Rogerdale Road)	
Shade	No	
Have counts been collected by H-GAC at this location before?	No	

Trends
<ul style="list-style-type: none"> • Usage tends to be higher on weekdays (76 users/day) than during weekends (55 users/day). • On weekdays, usage is highest in the evening (7:00 p.m. – 9:00 p.m.). There is also an increase in usage in the morning (7:00 a.m. – 8:00 a.m.). • During weekends, usage is highest in the morning (7:00 a.m. – 8:00 a.m.).

Location Information: Map



Location Information: Photos



Image 5: Library Loop Trail South at Rogerdale Road Facing East

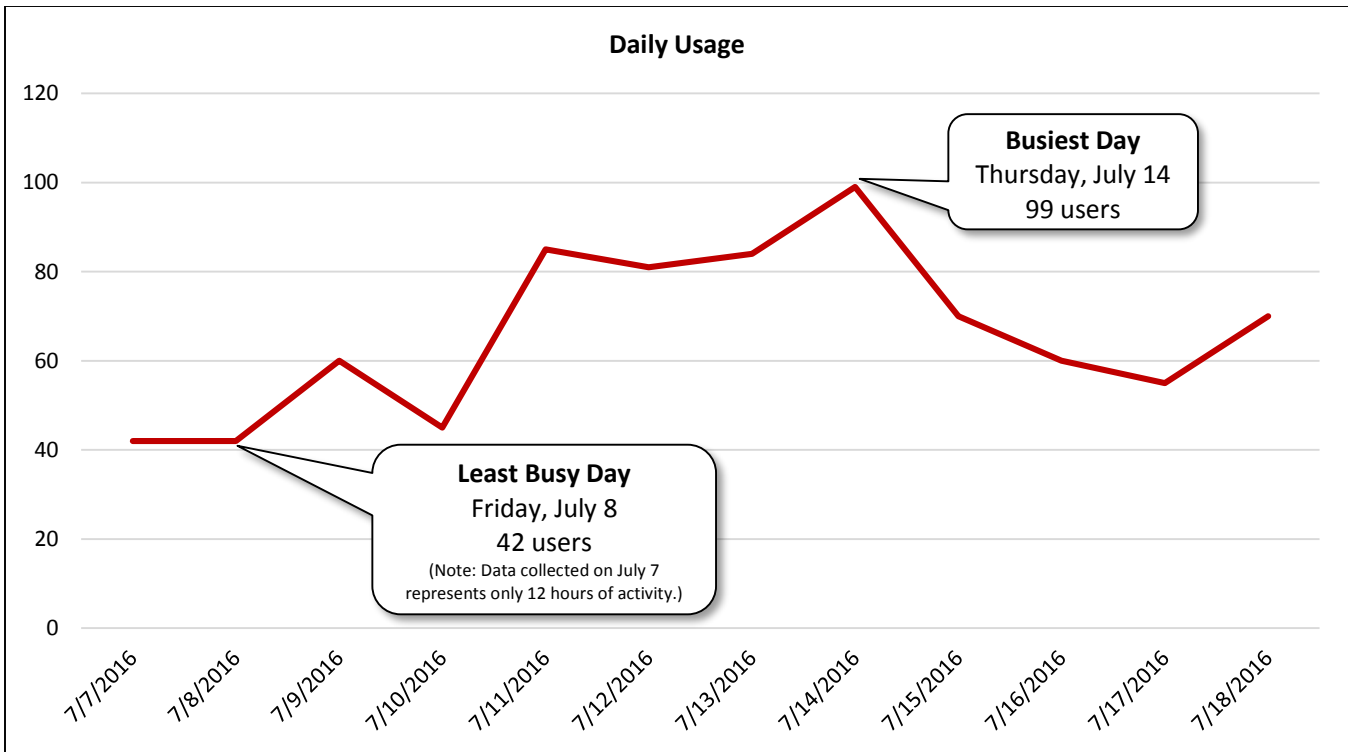


Image 6: Library Loop Trail South at Rogerdale Road Facing West

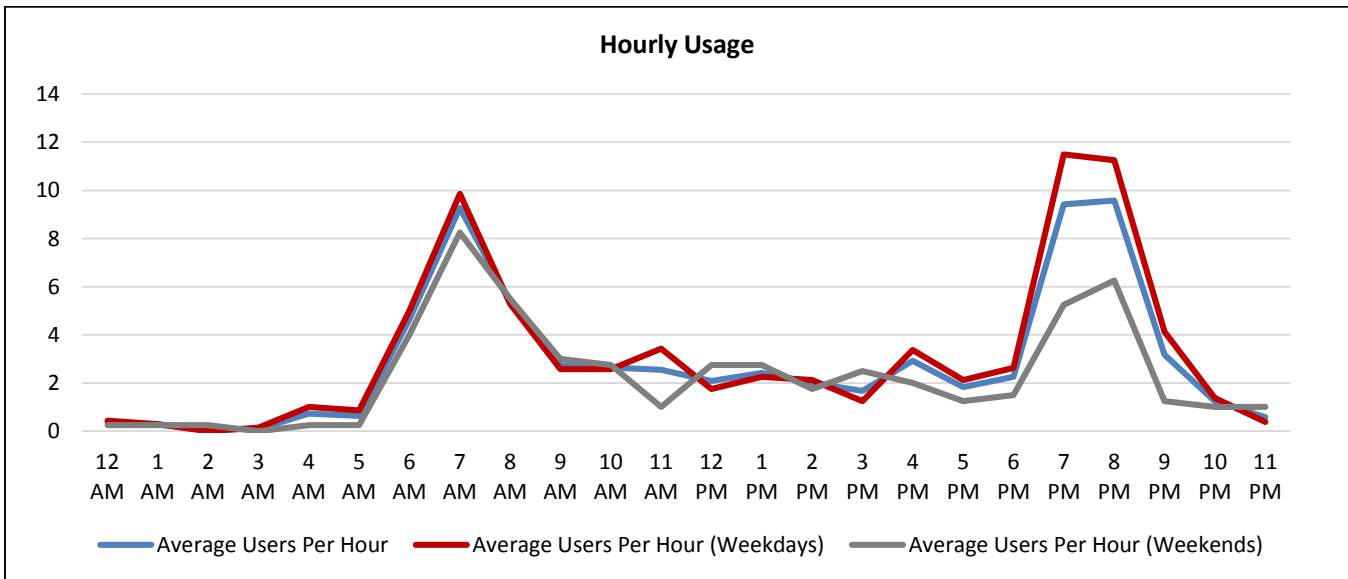
Daily Usage Library Loop Trail South at Rogerdale Road				
Date	Users	Select Weather Data*		
		High Temperature (°F)	Low Temperature (°F)	Precipitation (inches)
Thursday, July 7, 2016 (beginning at 12:00 p.m.)	42	95	79	0
Friday, July 8, 2016	42	95	79	0
Saturday, July 9, 2016	60	95	75	0.03
Sunday, July 10, 2016	45	93	77	0
Monday, July 11, 2016	85	95	79	0
Tuesday, July 12, 2016	81	96	77	0
Wednesday, July 13, 2016	84	95	79	0
Thursday, July 14, 2016	99	96	78	0
Friday, July 15, 2016	70	98	77	0
Saturday, July 16, 2016	60	96	73	0
Sunday, July 17, 2016	55	93	75	0.03
Monday, July 18, 2016	70	93	75	0
Total	793			
Average Daily Usage	69			
Average Daily Usage (Weekday)	76			
Average Daily Usage (Weekend)	55			

Notes	
Counter H3 began collecting data at 12:00 p.m. on Thursday, July 7, 2016.	

*Weather conditions recorded at KSGR.



Hourly Usage Library Loop Trail South at Rogerdale Road			
Time of Day	Average Users Per Hour	Average Users Per Hour (Weekdays)	Average Users Per Hour (Weekends)
12:00 a.m.	0.4	0.4	0.3
1:00 a.m.	0.3	0.3	0.3
2:00 a.m.	0.1	0.0	0.3
3:00 a.m.	0.1	0.1	0.0
4:00 a.m.	0.7	1.0	0.3
5:00 a.m.	0.6	0.9	0.3
6:00 a.m.	4.6	5.0	4.0
7:00 a.m.	9.3	9.9	8.3
8:00 a.m.	5.4	5.3	5.5
9:00 a.m.	2.7	2.6	3.0
10:00 a.m.	2.6	2.6	2.8
11:00 a.m.	2.5	3.4	1.0
12:00 p.m.	2.1	1.8	2.8
1:00 p.m.	2.4	2.3	2.8
2:00 p.m.	2.0	2.1	1.8
3:00 p.m.	1.7	1.3	2.5
4:00 p.m.	2.9	3.4	2.0
5:00 p.m.	1.8	2.1	1.3
6:00 p.m.	2.3	2.6	1.5
7:00 p.m.	9.4	11.5	5.3
8:00 p.m.	9.6	11.3	6.3
9:00 p.m.	3.2	4.1	1.3
10:00 p.m.	1.3	1.4	1.0
11:00 p.m.	0.6	0.4	1.0



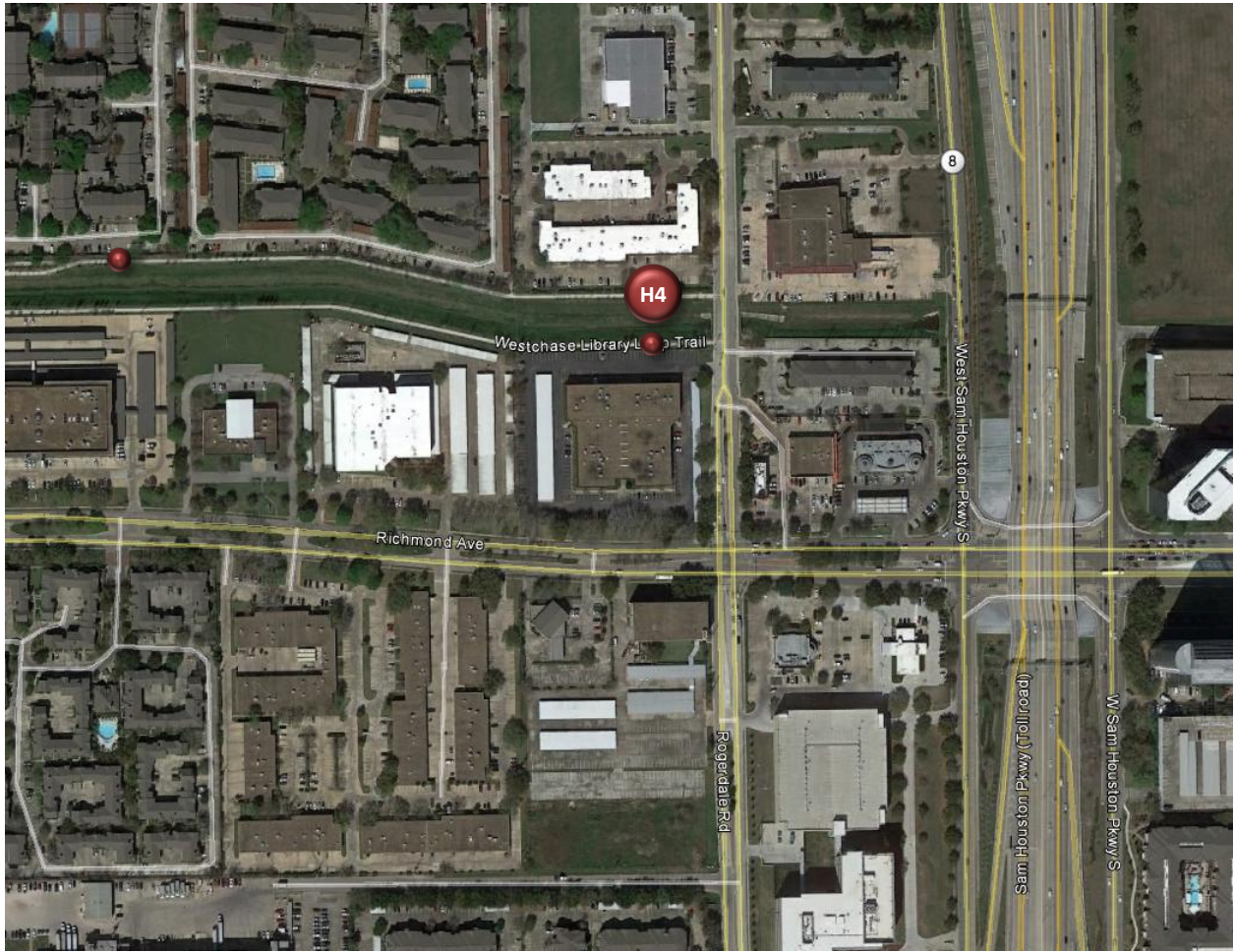
Counter H4

Library Loop Trail North at Rogerdale Road

Location Information		
Location Name	Library Loop Trail North at Rogerdale Road	
Location Description	Library Loop Trail North at Rogerdale Road	
Jurisdiction	Library Loop Trail (Shared-Use Path) North of Ditch (D124-01-00) West of Rogerdale Road	
Agency Deployed	City of Houston/Westchase District	
GPS Coordinates	29°43'45.37"N, 95°33'36.71"W	
Surrounding Land Uses	North	Office, Retail
	South	Office
	East	Institutional (Post Office), Hotel, Retail
	West	Office, Multi-Family Residential
What object was device secured to?	Tree	
Sidewalk Width	8'	
Buffer Width	N/A (Off-Road Shared-Use Path)	
Street Width	N/A (Off-Road Shared-Use Path)	
Parallel Parking	N/A (Off-Road Shared-Use Path)	
Landscaping or Trees	Yes	
Sidewalk Pavement Type	Concrete	
ADA Ramps	Yes	
Sidewalk Condition	Excellent	
Speed Limit	N/A (Off-Road Shared-Use Path)	
Street Lighting	No	
Street Traffic Volume	N/A (Off-Road Shared-Use Path)	
Transit	Yes (METRO Bus Stops 550' South at Richmond Avenue/Rogerdale Road)	
Shade	No	
Have counts been collected by H-GAC at this location before?	No	

Trends
<ul style="list-style-type: none"> Usage tends to be higher on weekdays (142 users/day) than during weekends (115 users/day). On weekdays, usage is highest in the morning (7:00 a.m. – 8:00 a.m.) and evening (7:00 p.m. – 9:00 p.m.). During weekends, usage is highest in the morning (7:00 a.m. – 8:00 a.m.).

Location Information: Map



Location Information: Photos



Image 7: Library Loop Trail North at Rogerdale Road Facing East

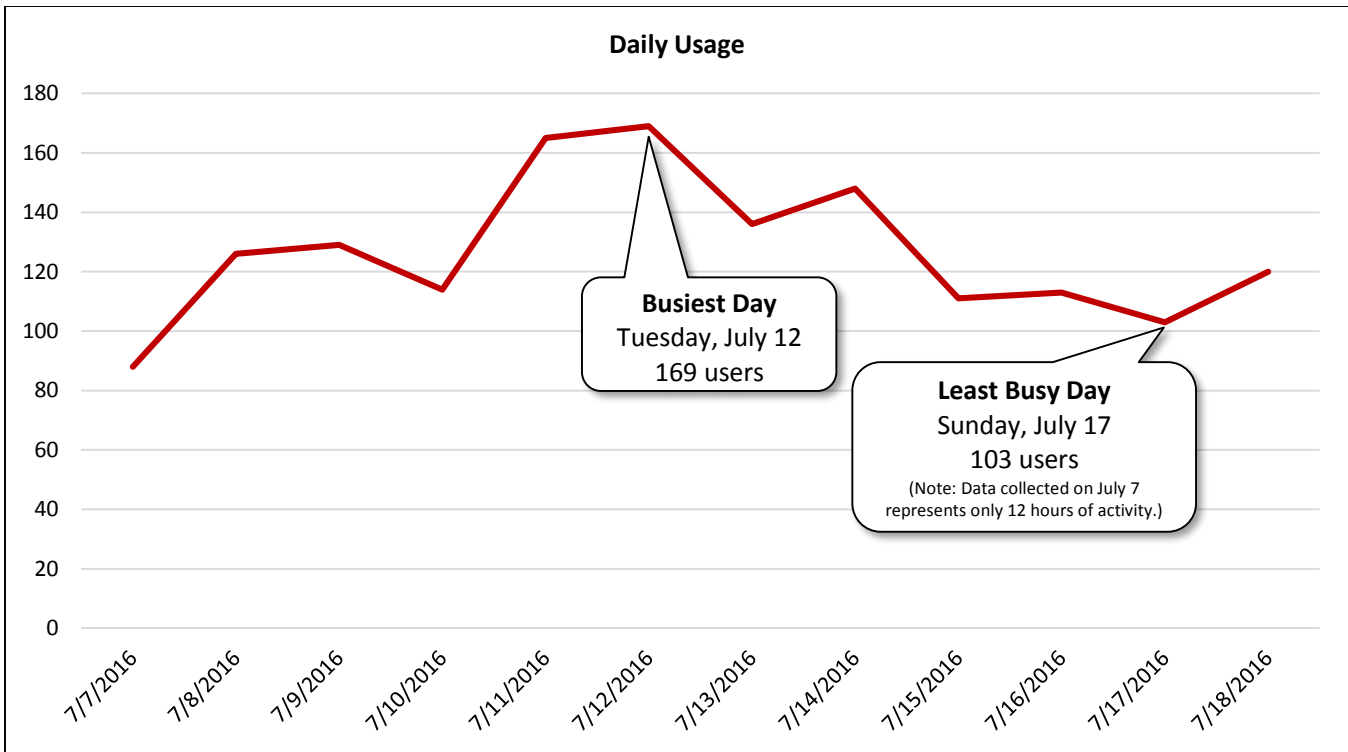


Image 8: Library Loop Trail North at Rogerdale Road Facing West

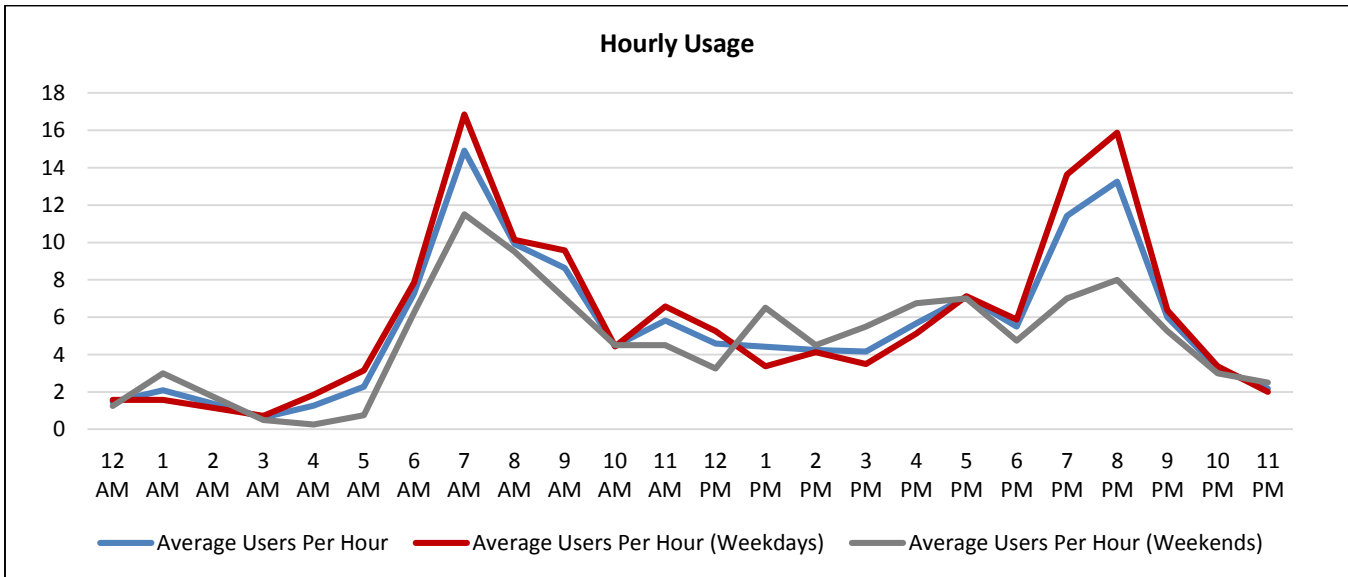
Daily Usage Library Loop Trail North at Rogerdale Road				
Date	Users	Select Weather Data*		
		High Temperature (°F)	Low Temperature (°F)	Precipitation (inches)
Thursday, July 7, 2016 (beginning at 12:00 p.m.)	88	95	79	0
Friday, July 8, 2016	126	95	79	0
Saturday, July 9, 2016	129	95	75	0.03
Sunday, July 10, 2016	114	93	77	0
Monday, July 11, 2016	165	95	79	0
Tuesday, July 12, 2016	169	96	77	0
Wednesday, July 13, 2016	136	95	79	0
Thursday, July 14, 2016	148	96	78	0
Friday, July 15, 2016	111	98	77	0
Saturday, July 16, 2016	113	96	73	0
Sunday, July 17, 2016	103	93	75	0.03
Monday, July 18, 2016	120	93	75	0
Total	1,522			
Average Daily Usage	132			
Average Daily Usage (Weekday)	142			
Average Daily Usage (Weekend)	115			

Notes	
Counter H4 began collecting data at 12:00 p.m. on Thursday, July 7, 2016.	

*Weather conditions recorded at KSGR.



Hourly Usage Library Loop Trail North at Rogerdale Road			
Time of Day	Average Users Per Hour	Average Users Per Hour (Weekdays)	Average Users Per Hour (Weekends)
12:00 a.m.	1.5	1.6	1.3
1:00 a.m.	2.1	1.6	3.0
2:00 a.m.	1.4	1.1	1.8
3:00 a.m.	0.6	0.7	0.5
4:00 a.m.	1.3	1.9	0.3
5:00 a.m.	2.3	3.1	0.8
6:00 a.m.	7.3	7.9	6.3
7:00 a.m.	14.9	16.9	11.5
8:00 a.m.	9.9	10.1	9.5
9:00 a.m.	8.6	9.6	7.0
10:00 a.m.	4.5	4.4	4.5
11:00 a.m.	5.8	6.6	4.5
12:00 p.m.	4.6	5.3	3.3
1:00 p.m.	4.4	3.4	6.5
2:00 p.m.	4.3	4.1	4.5
3:00 p.m.	4.2	3.5	5.5
4:00 p.m.	5.7	5.1	6.8
5:00 p.m.	7.1	7.1	7.0
6:00 p.m.	5.5	5.9	4.8
7:00 p.m.	11.4	13.6	7.0
8:00 p.m.	13.3	15.9	8.0
9:00 p.m.	6.0	6.4	5.3
10:00 p.m.	3.3	3.4	3.0
11:00 p.m.	2.2	2.0	2.5



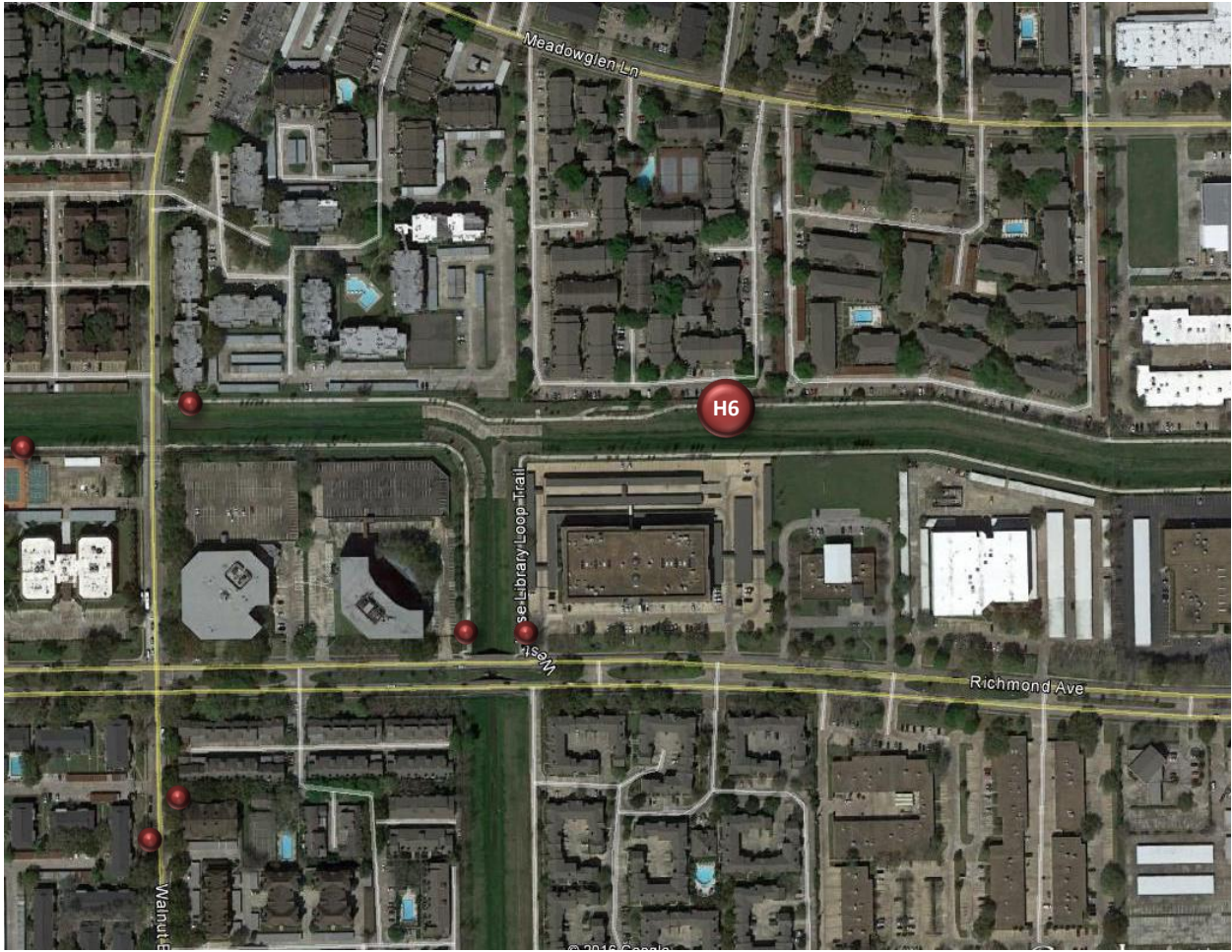
Counter H6

Library Loop Trail North at Meadowchase Apartments

Location Information		
Location Name	Library Loop Trail North at Meadowchase Apartments	
Location Description	Library Loop Trail (Shared-Use Path) North of Ditch (D124-01-00) between Rogerdale Road and Walnut Bend Lane behind Meadowchase Apartments (10751 Meadowglen Lane)	
Jurisdiction	City of Houston/Westchase District	
Agency Deployed	Westchase District	
GPS Coordinates	29°43'45.95"N, 95°33'52.47"W	
Surrounding Land Uses	North	Multi-Family Residential
	South	Office, Multi-Family Residential
	East	Multi-Family Residential, Office
	West	Multi-Family Residential, Office
What object was device secured to?	Tree	
Sidewalk Width	8'	
Buffer Width	N/A (Off-Road Shared-Use Path)	
Street Width	N/A (Off-Road Shared-Use Path)	
Parallel Parking	N/A (Off-Road Shared-Use Path)	
Landscaping or Trees	Yes	
Sidewalk Pavement Type	Concrete	
ADA Ramps	Yes	
Sidewalk Condition	Excellent	
Speed Limit	N/A (Off-Road Shared-Use Path)	
Street Lighting	No	
Street Traffic Volume	N/A (Off-Road Shared-Use Path)	
Transit	No	
Shade	Intermittent	
Have counts been collected by H-GAC at this location before?	No	

Trends
<ul style="list-style-type: none"> • Usage tends to be higher on weekdays (91 users/day) than during weekends (82 users/day). • On weekdays, usage is highest in the morning (7:00 a.m. – 8:00 a.m.). • During weekends, usage is highest in the morning (7:00 a.m. – 8:00 a.m.).

Location Information: Map



Location Information: Photos

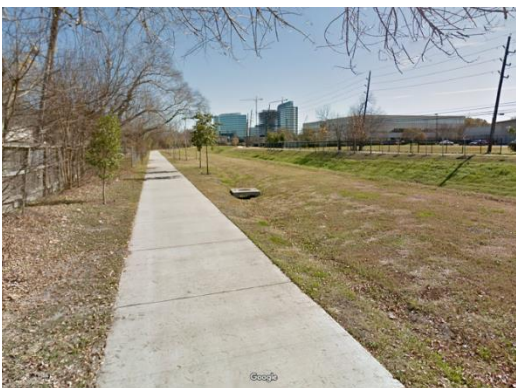


Image 9: Library Loop Trail North at Meadowchase Apartments Facing East
(Photo Credit: Google Maps)

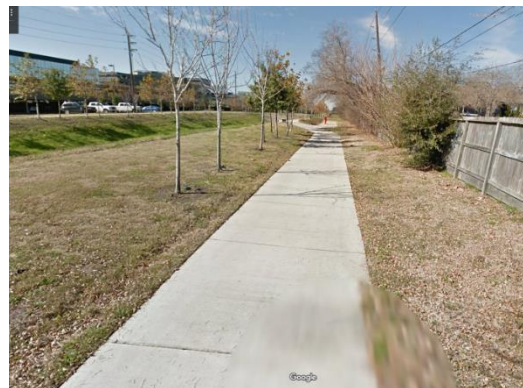
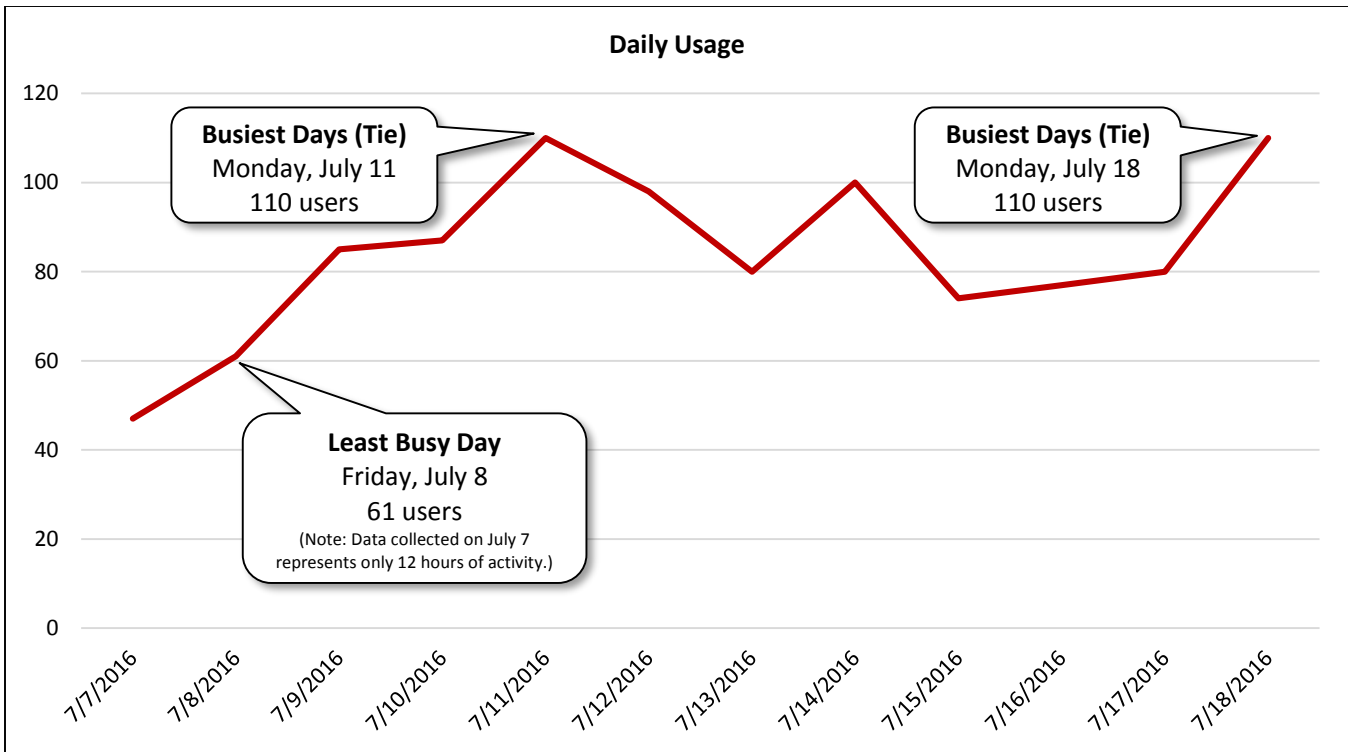


Image 10: Library Loop Trail South at Meadowchase Apartments Facing West
(Photo Credit: Google Maps)

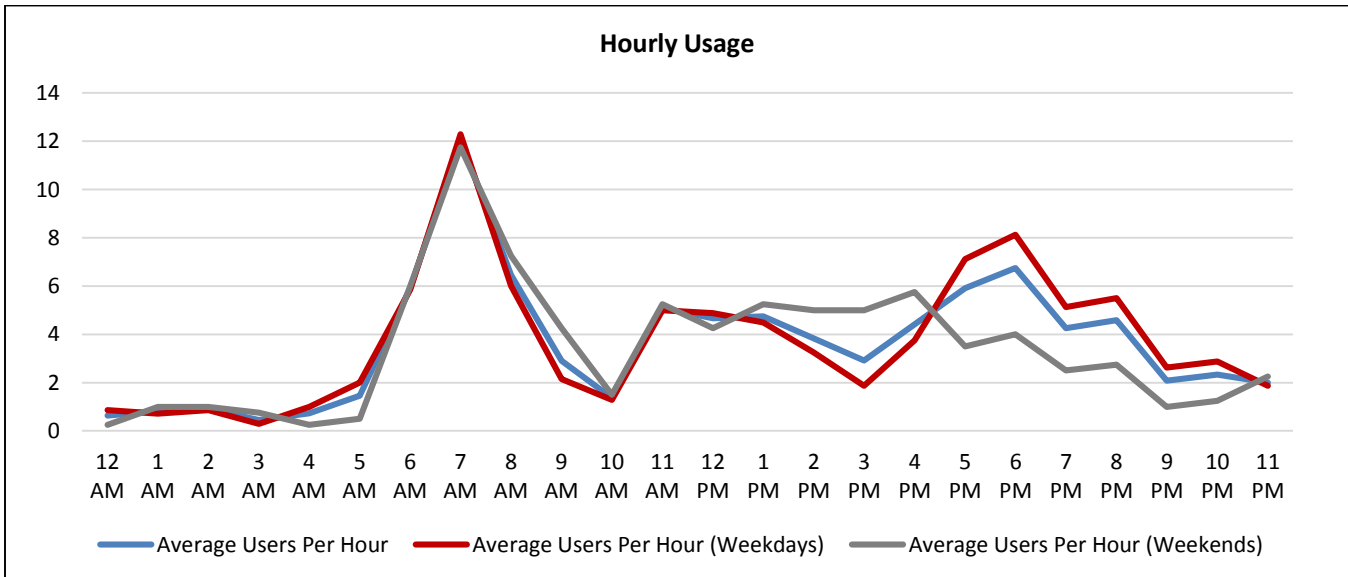
Daily Usage Library Loop Trail North at Meadowchase Apartments				
Date	Users	Select Weather Data*		
		High Temperature (°F)	Low Temperature (°F)	Precipitation (inches)
Thursday, July 7, 2016 (beginning at 12:00 p.m.)	47	95	79	0
Friday, July 8, 2016	61	95	79	0
Saturday, July 9, 2016	85	95	75	0.03
Sunday, July 10, 2016	87	93	77	0
Monday, July 11, 2016	110	95	79	0
Tuesday, July 12, 2016	98	96	77	0
Wednesday, July 13, 2016	80	95	79	0
Thursday, July 14, 2016	100	96	78	0
Friday, July 15, 2016	74	98	77	0
Saturday, July 16, 2016	77	96	73	0
Sunday, July 17, 2016	80	93	75	0.03
Monday, July 18, 2016	110	93	75	0
Total	1,009			
Average Daily Usage	88			
Average Daily Usage (Weekday)	91			
Average Daily Usage (Weekend)	82			

Notes	
Counter H6 began collecting data at 12:00 p.m. on Thursday, July 7, 2016.	

*Weather conditions recorded at KSGR.



Hourly Usage Library Loop Trail North at Meadowchase Apartments			
Time of Day	Average Users Per Hour	Average Users Per Hour (Weekdays)	Average Users Per Hour (Weekends)
12:00 a.m.	0.6	0.9	0.3
1:00 a.m.	0.8	0.7	1.0
2:00 a.m.	0.9	0.9	1.0
3:00 a.m.	0.5	0.3	0.8
4:00 a.m.	0.7	1.0	0.3
5:00 a.m.	1.5	2.0	0.5
6:00 a.m.	5.9	5.9	6.0
7:00 a.m.	12.1	12.3	11.8
8:00 a.m.	6.5	6.0	7.3
9:00 a.m.	2.9	2.1	4.3
10:00 a.m.	1.4	1.3	1.5
11:00 a.m.	5.1	5.0	5.3
12:00 p.m.	4.7	4.9	4.3
1:00 p.m.	4.8	4.5	5.3
2:00 p.m.	3.8	3.3	5.0
3:00 p.m.	2.9	1.9	5.0
4:00 p.m.	4.4	3.8	5.8
5:00 p.m.	5.9	7.1	3.5
6:00 p.m.	6.8	8.1	4.0
7:00 p.m.	4.3	5.1	2.5
8:00 p.m.	4.6	5.5	2.8
9:00 p.m.	2.1	2.6	1.0
10:00 p.m.	2.3	2.9	1.3
11:00 p.m.	2.0	1.9	2.3



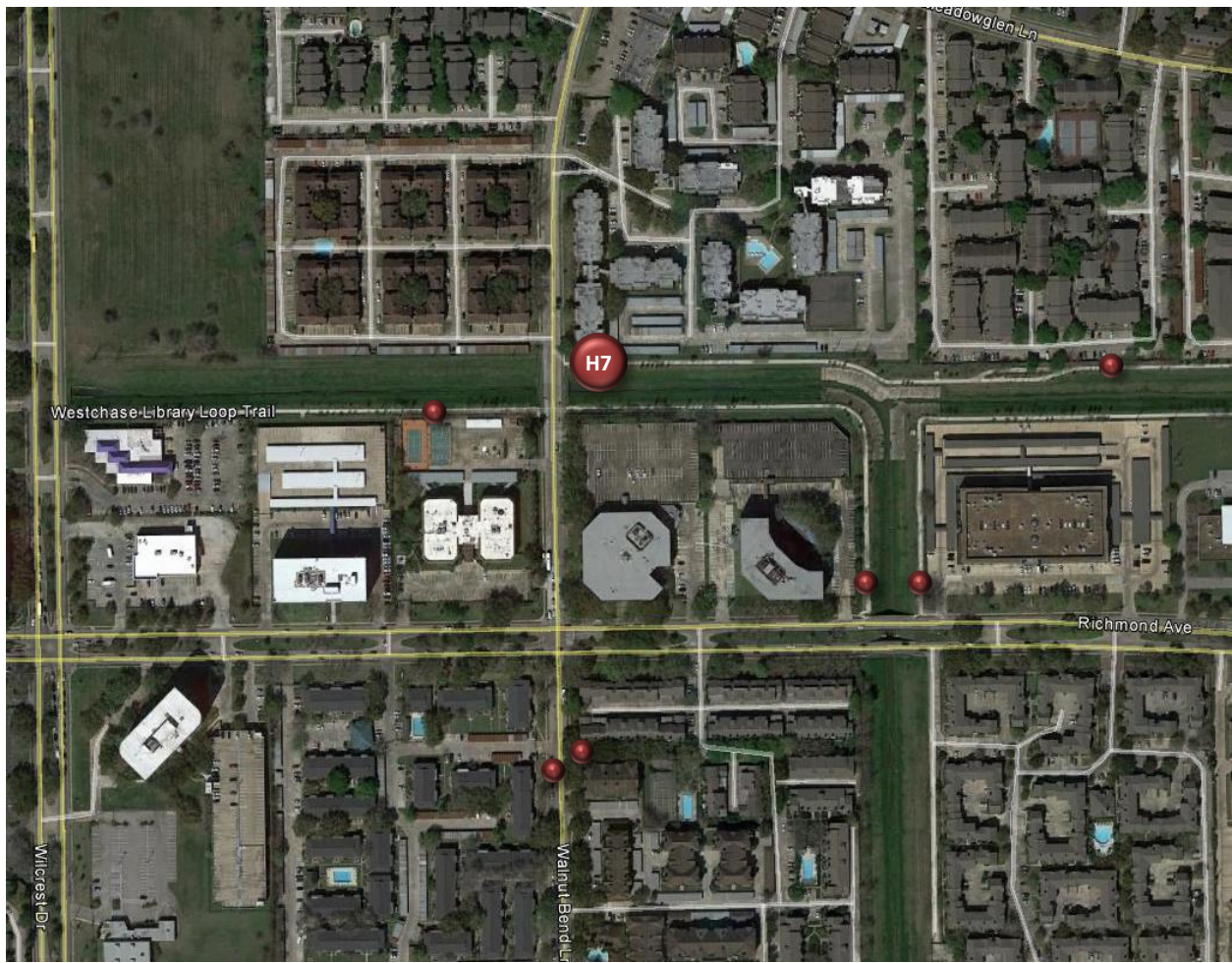
Counter H7

Library Loop Trail North at Walnut Bend Lane

Location Information		
Location Name	Library Loop Trail North at Walnut Bend Lane	
Location Description	Library Loop Trail (Shared-Use Path) North of Ditch (D124-01-00) East of Walnut Bend Lane	
Jurisdiction	City of Houston/Westchase District	
Agency Deployed	Westchase District	
GPS Coordinates	29°43'46.18"N, 95°34'2.85"W	
Surrounding Land Uses	North	Multi-Family Residential
	South	Office, Multi-Family Residential
	East	Multi-Family Residential, Office
	West	Multi-Family Residential, Office
What object was device secured to?	Fence Post	
Sidewalk Width	8'	
Buffer Width	N/A (Off-Road Shared-Use Path)	
Street Width	N/A (Off-Road Shared-Use Path)	
Parallel Parking	N/A (Off-Road Shared-Use Path)	
Landscaping or Trees	Yes	
Sidewalk Pavement Type	Concrete	
ADA Ramps	Yes	
Sidewalk Condition	Excellent	
Speed Limit	N/A (Off-Road Shared-Use Path)	
Street Lighting	No	
Street Traffic Volume	N/A (Off-Road Shared-Use Path)	
Transit	Yes (METRO Bus Stop 400' North at 3100 Walnut Bend Lane)	
Shade	Intermittent	
Have counts been collected by H-GAC at this location before?	No	
Notes	Counter H7 malfunctioned and did not collect data during the deployment period.	

Trends
Counter H7 malfunctioned and did not collect data during the deployment period.

Location Information: Map



Location Information: Photos



Image 11: Library Loop Trail North at Walnut Bend Lane Facing East



Image 12: Library Loop Trail North at Walnut Bend Lane Facing West

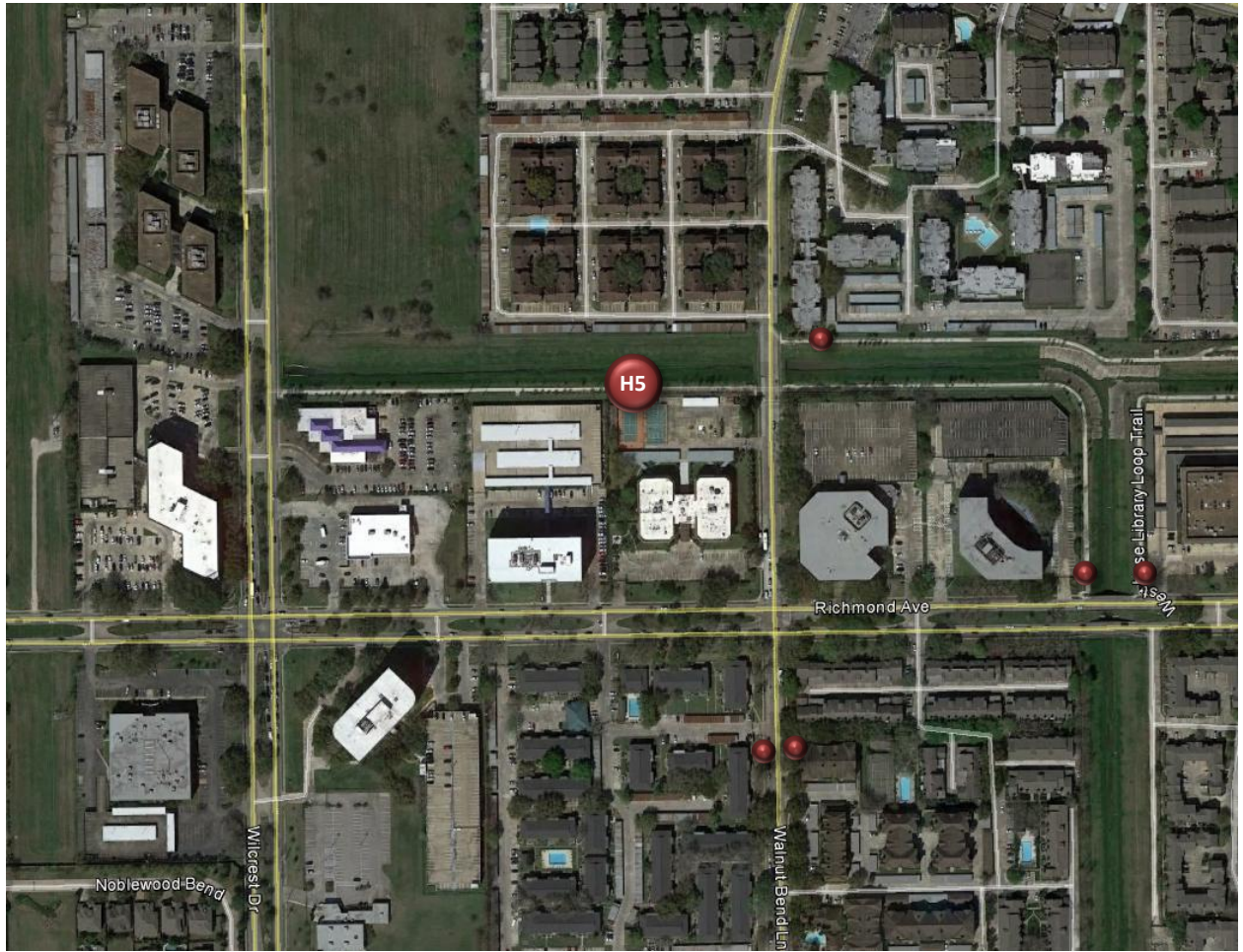
Counter H5

Library Loop Trail South near Robinson-Westchase Neighborhood Library

Location Information		
Location Name	Library Loop Trail South near Robinson-Westchase Neighborhood Library	
Location Description	Library Loop Trail (Shared-Use Path) South of Ditch (D124-00-00) East of Robinson-Westchase Neighborhood Library	
Jurisdiction	City of Houston/Westchase District	
Agency Deployed	Westchase District	
GPS Coordinates	29°43'45.21"N, 95°34'8.67"W	
Surrounding Land Uses	North	Multi-Family Residential
	South	Office, Multi-Family Residential
	East	Office, Multi-Family Residential
	West	Office, Institutional (Robinson-Westchase Neighborhood Library), Vacant Land
What object was device secured to?	Tree	
Sidewalk Width	8'	
Buffer Width	N/A (Off-Road Shared-Use Path)	
Street Width	N/A (Off-Road Shared-Use Path)	
Parallel Parking	N/A (Off-Road Shared-Use Path)	
Landscaping or Trees	Yes	
Sidewalk Pavement Type	Concrete	
ADA Ramps	Yes	
Sidewalk Condition	Excellent	
Speed Limit	N/A (Off-Road Shared-Use Path)	
Street Lighting	No	
Street Traffic Volume	N/A (Off-Road Shared-Use Path)	
Transit	Yes (METRO Bus Stop 600' Southeast at Richmond Avenue/Walnut Bend Lane)	
Shade	Intermittent	
Have counts been collected by H-GAC at this location before?	No	

Trends
<ul style="list-style-type: none"> • Usage tends to be higher on weekdays (79 users/day) than during weekends (54 users/day). • On weekdays, usage is highest midday (12:00 p.m. – 1:00 p.m.). • During weekends, usage is highest in the morning (7:00 a.m. – 8:00 a.m.).

Location Information: Map



Location Information: Photos



Image 13: Library Loop Trail South near Robinson-Westchase Neighborhood Library Facing East



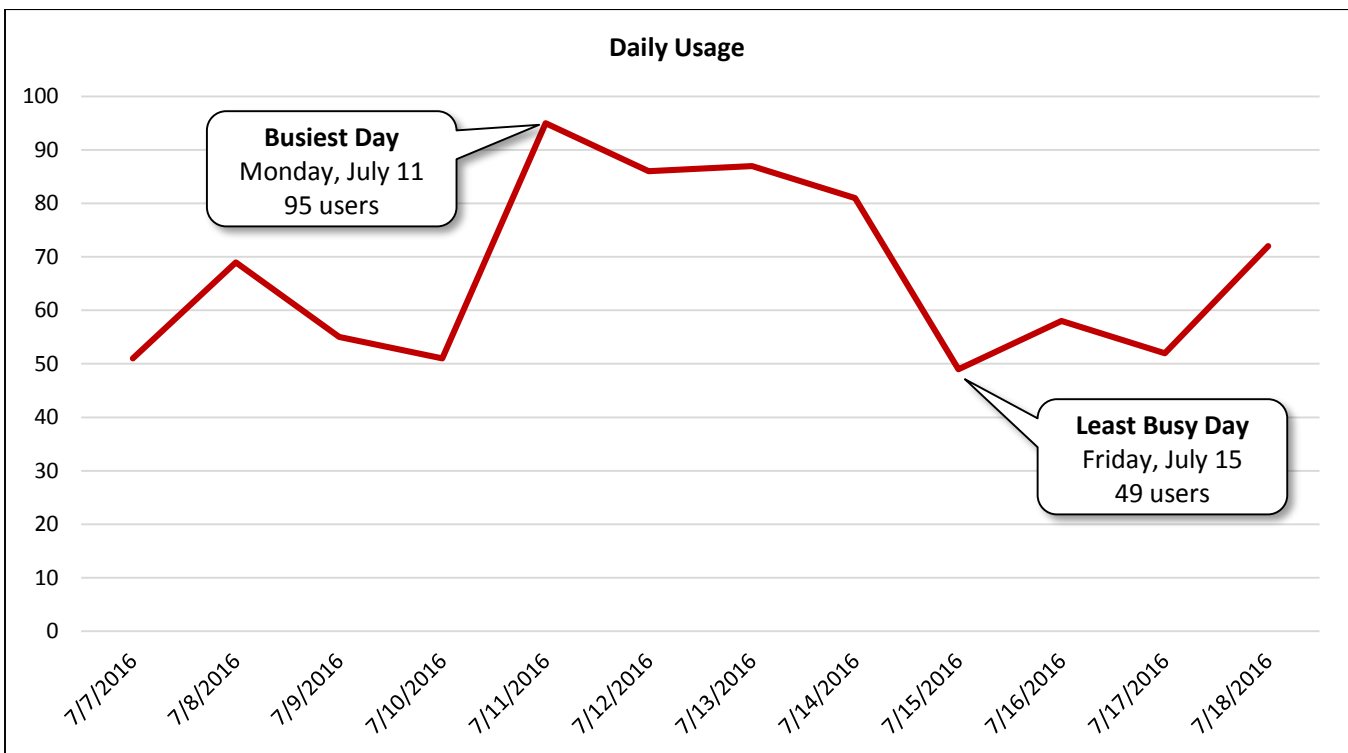
Image 14: Library Loop Trail South near Robinson-Westchase Neighborhood Library Facing West

Daily Usage Library Loop Trail South near Robinson-Westchase Neighborhood Library				
Date	Users	Select Weather Data*		
		High Temperature (°F)	Low Temperature (°F)	Precipitation (inches)
Thursday, July 7, 2016 (beginning at 12:00 p.m.)	51	95	79	0
Friday, July 8, 2016	69	95	79	0
Saturday, July 9, 2016	55	95	75	0.03
Sunday, July 10, 2016	51	93	77	0
Monday, July 11, 2016	95	95	79	0
Tuesday, July 12, 2016	86	96	77	0
Wednesday, July 13, 2016	87	95	79	0
Thursday, July 14, 2016	81	96	78	0
Friday, July 15, 2016	49	98	77	0
Saturday, July 16, 2016	58	96	73	0
Sunday, July 17, 2016	52	93	75	0.03
Monday, July 18, 2016	72	93	75	0

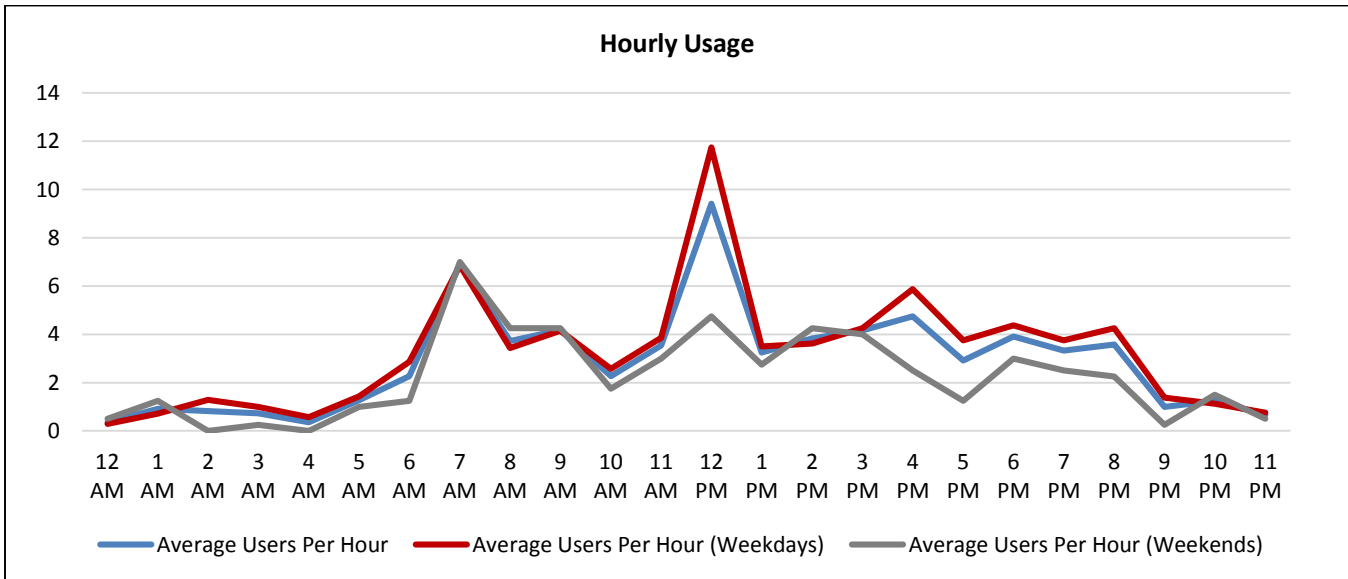
Total	806
Average Daily Usage	70
Average Daily Usage (Weekday)	79
Average Daily Usage (Weekend)	54

Notes
Counter H5 began collecting data at 12:00 p.m. on Thursday, July 7, 2016.

*Weather conditions recorded at KSGR.



Hourly Usage			
Library Loop Trail South near Robinson-Westchase Neighborhood Library			
Time of Day	Average Users Per Hour	Average Users Per Hour (Weekdays)	Average Users Per Hour (Weekends)
12:00 a.m.	0.4	0.3	0.5
1:00 a.m.	0.9	0.7	1.3
2:00 a.m.	0.8	1.3	0.0
3:00 a.m.	0.7	1.0	0.3
4:00 a.m.	0.4	0.6	0.0
5:00 a.m.	1.3	1.4	1.0
6:00 a.m.	2.3	2.9	1.3
7:00 a.m.	6.9	6.9	7.0
8:00 a.m.	3.7	3.4	4.3
9:00 a.m.	4.2	4.1	4.3
10:00 a.m.	2.3	2.6	1.8
11:00 a.m.	3.5	3.9	3.0
12:00 p.m.	9.4	11.8	4.8
1:00 p.m.	3.3	3.5	2.8
2:00 p.m.	3.8	3.6	4.3
3:00 p.m.	4.2	4.3	4.0
4:00 p.m.	4.8	5.9	2.5
5:00 p.m.	2.9	3.8	1.3
6:00 p.m.	3.9	4.4	3.0
7:00 p.m.	3.3	3.8	2.5
8:00 p.m.	3.6	4.3	2.3
9:00 p.m.	1.0	1.4	0.3
10:00 p.m.	1.3	1.1	1.5
11:00 p.m.	0.7	0.8	0.5



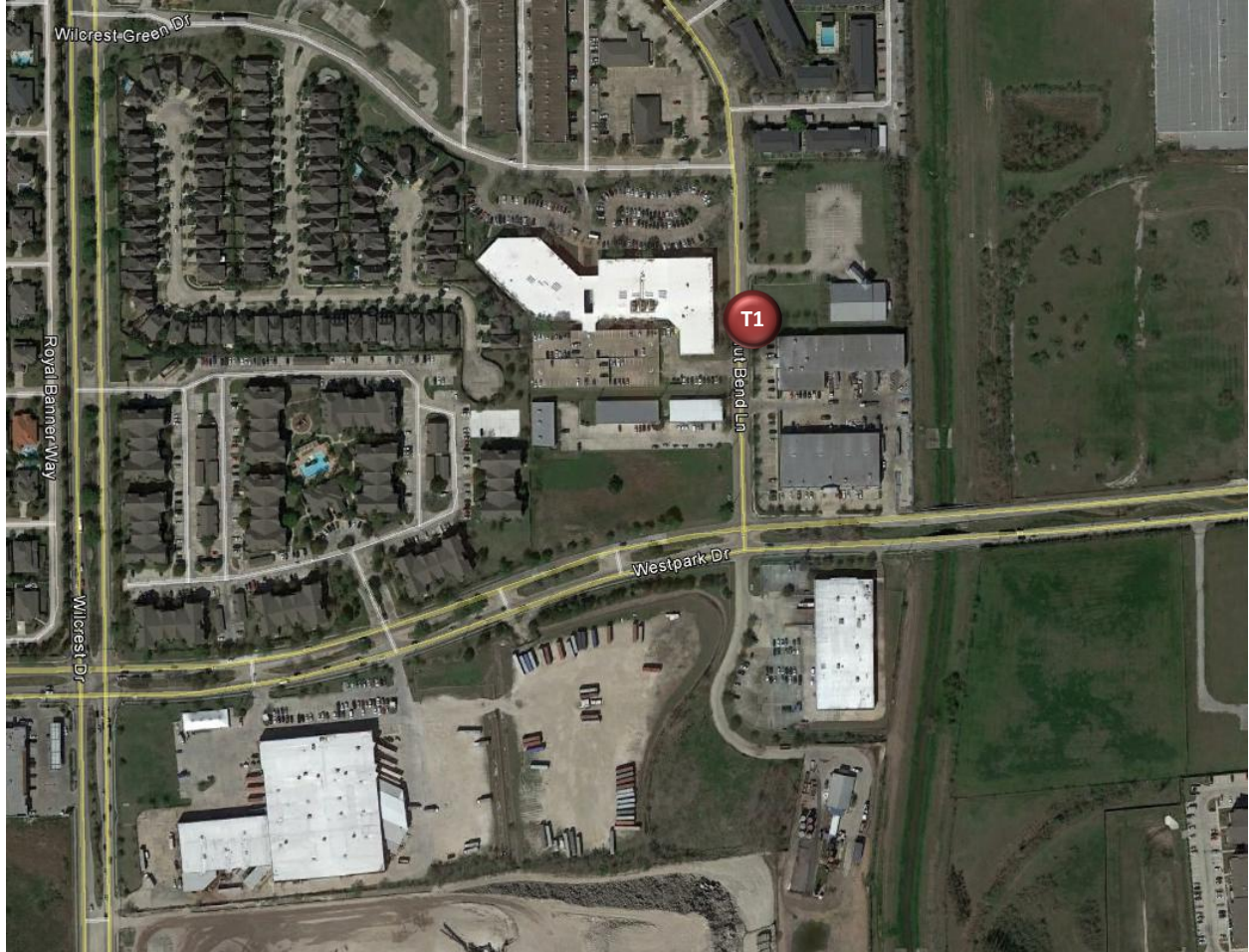
Counter T1

Walnut Bend Lane Northbound North of Westpark Drive

Location Information		
Location Name	Walnut Bend Lane Northbound North of Westpark Drive	
Location Description	Sidewalk along Walnut Bend Lane Northbound North of Westpark Drive	
Jurisdiction	City of Houston/Westchase District	
Agency Deployed	Westchase District	
GPS Coordinates	29°43'21.65"N, 95°34'0.82"W	
Surrounding Land Uses	North	Office, Institutional (Churches), Multi-Family Residential
	South	Office, Industrial
	East	Office, Institutional (Church), Vacant Land
	West	Office, Multi-Family Residential, Single-Family Residential
What object was device secured to?	Post (Gas Line Marker)	
Sidewalk Width	4'	
Buffer Width	4'	
Street Width	Two-Lane Undivided Roadway (with Parking Lanes on Both Sides)	
Parallel Parking	Yes	
Landscaping or Trees	Yes	
Sidewalk Pavement Type	Concrete	
ADA Ramps	Yes	
Sidewalk Condition	Good (Overgrown Vegetation)	
Speed Limit	30 miles per hour	
Street Lighting	No	
Street Traffic Volume	Not Available	
Transit	Yes (METRO Bus Stop 300' North at Walnut Bend Lane/Wilcrest Green Drive and 350' South at Walnut Bend Lane/Westpark Drive)	
Shade	Intermittent	
Have counts been collected by H-GAC at this location before?	No	
Notes	At this location, there is only a sidewalk along one side of Walnut Bend Lane. There is a sidewalk along the northbound travel lanes, but not the southbound travel lanes.	
	Funding has been allocated through the H-GAC 2017-2020 Transportation Improvement Program (TIP) to reconstruct Walnut Bend Lane between Westheimer Road and Westpark Drive. New sidewalks, pedestrian ramps, lighting, landscaping, and other improvements are planned and expected in FY2018.	

Trends
<ul style="list-style-type: none"> • Pedestrian usage is generally low at this location (11 users/day). • Usage tends to be higher on weekdays (13 users/day) than during weekends (8 users/day). • On weekdays, usage is highest in the evening (5:00 p.m. – 6:00 p.m.). • During weekends, usage is highest in the morning (9:00 a.m. – 10:00 a.m.).

Location Information: Map



Location Information: Photos



Image 15: Sidewalk along Walnut Bend Lane Northbound North of Westpark Drive Facing North



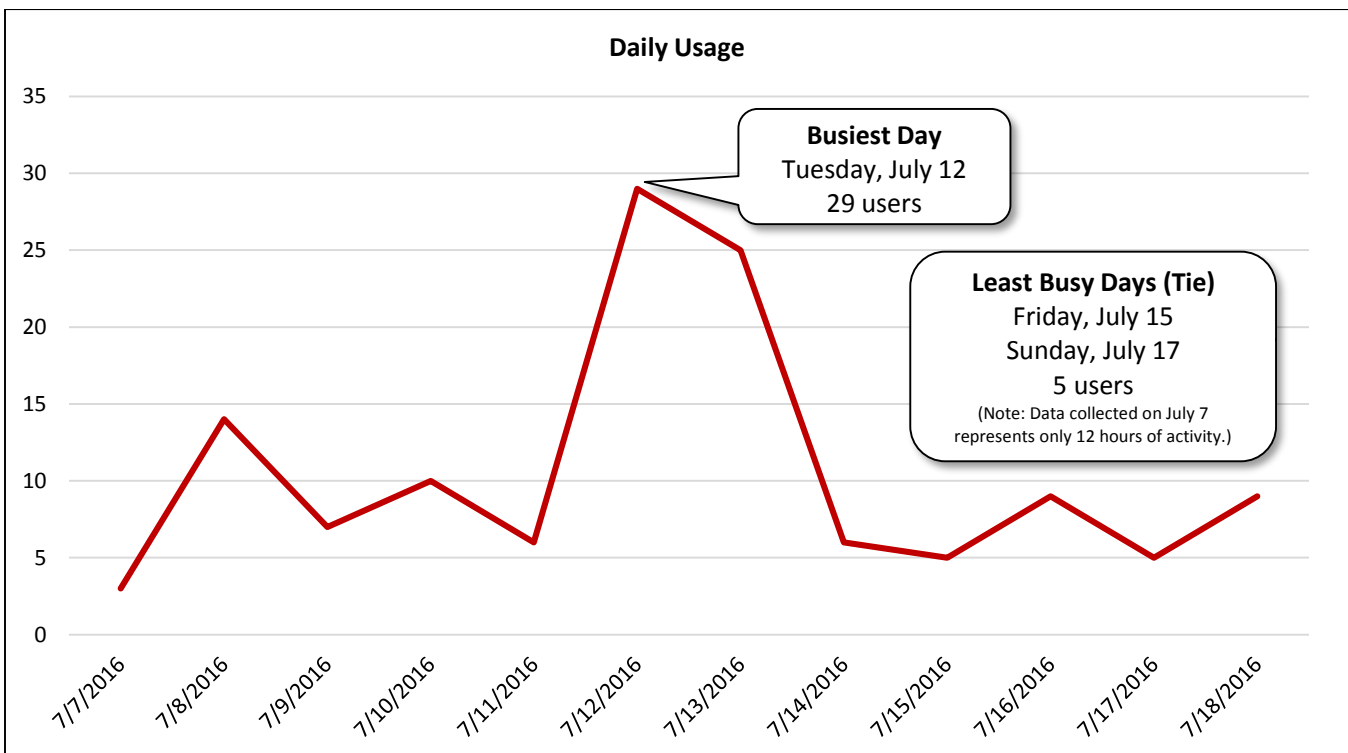
Image 16: Sidewalk along Walnut Bend Lane Northbound North of Westpark Drive Facing South

Daily Usage				
Walnut Bend Lane Northbound North of Westpark Drive				
Date	Users	Select Weather Data*		
		High Temperature (°F)	Low Temperature (°F)	Precipitation (inches)
Thursday, July 7, 2016 (beginning at 12:00 p.m.)	3	95	79	0
Friday, July 8, 2016	14	95	79	0
Saturday, July 9, 2016	7	95	75	0.03
Sunday, July 10, 2016	10	93	77	0
Monday, July 11, 2016	6	95	79	0
Tuesday, July 12, 2016	29	96	77	0
Wednesday, July 13, 2016	25	95	79	0
Thursday, July 14, 2016	6	96	78	0
Friday, July 15, 2016	5	98	77	0
Saturday, July 16, 2016	9	96	73	0
Sunday, July 17, 2016	5	93	75	0.03
Monday, July 18, 2016	9	93	75	0

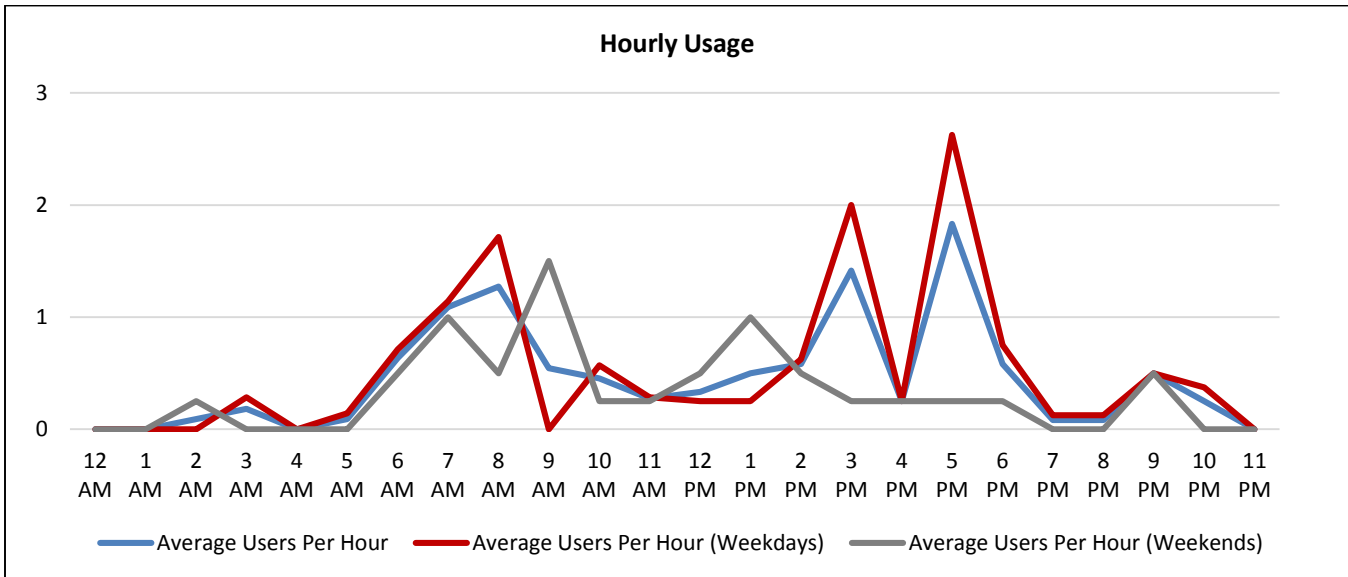
Total	128
Average Daily Usage	11
Average Daily Usage (Weekday)	13
Average Daily Usage (Weekend)	8

Notes
Counter T1 began collecting data at 12:00 p.m. on Thursday, July 7, 2016.

*Weather conditions recorded at KSGR.



Hourly Usage			
Walnut Bend Lane Northbound North of Westpark Drive			
Time of Day	Average Users Per Hour	Average Users Per Hour (Weekdays)	Average Users Per Hour (Weekends)
12:00 a.m.	0.0	0.0	0.0
1:00 a.m.	0.0	0.0	0.0
2:00 a.m.	0.1	0.0	0.3
3:00 a.m.	0.2	0.3	0.0
4:00 a.m.	0.0	0.0	0.0
5:00 a.m.	0.1	0.1	0.0
6:00 a.m.	0.6	0.7	0.5
7:00 a.m.	1.1	1.1	1.0
8:00 a.m.	1.3	1.7	0.5
9:00 a.m.	0.5	0.0	1.5
10:00 a.m.	0.5	0.6	0.3
11:00 a.m.	0.3	0.3	0.3
12:00 p.m.	0.3	0.3	0.5
1:00 p.m.	0.5	0.3	1.0
2:00 p.m.	0.6	0.6	0.5
3:00 p.m.	1.4	2.0	0.3
4:00 p.m.	0.3	0.3	0.3
5:00 p.m.	1.8	2.6	0.3
6:00 p.m.	0.6	0.8	0.3
7:00 p.m.	0.1	0.1	0.0
8:00 p.m.	0.1	0.1	0.0
9:00 p.m.	0.5	0.5	0.5
10:00 p.m.	0.3	0.4	0.0
11:00 p.m.	0.0	0.0	0.0



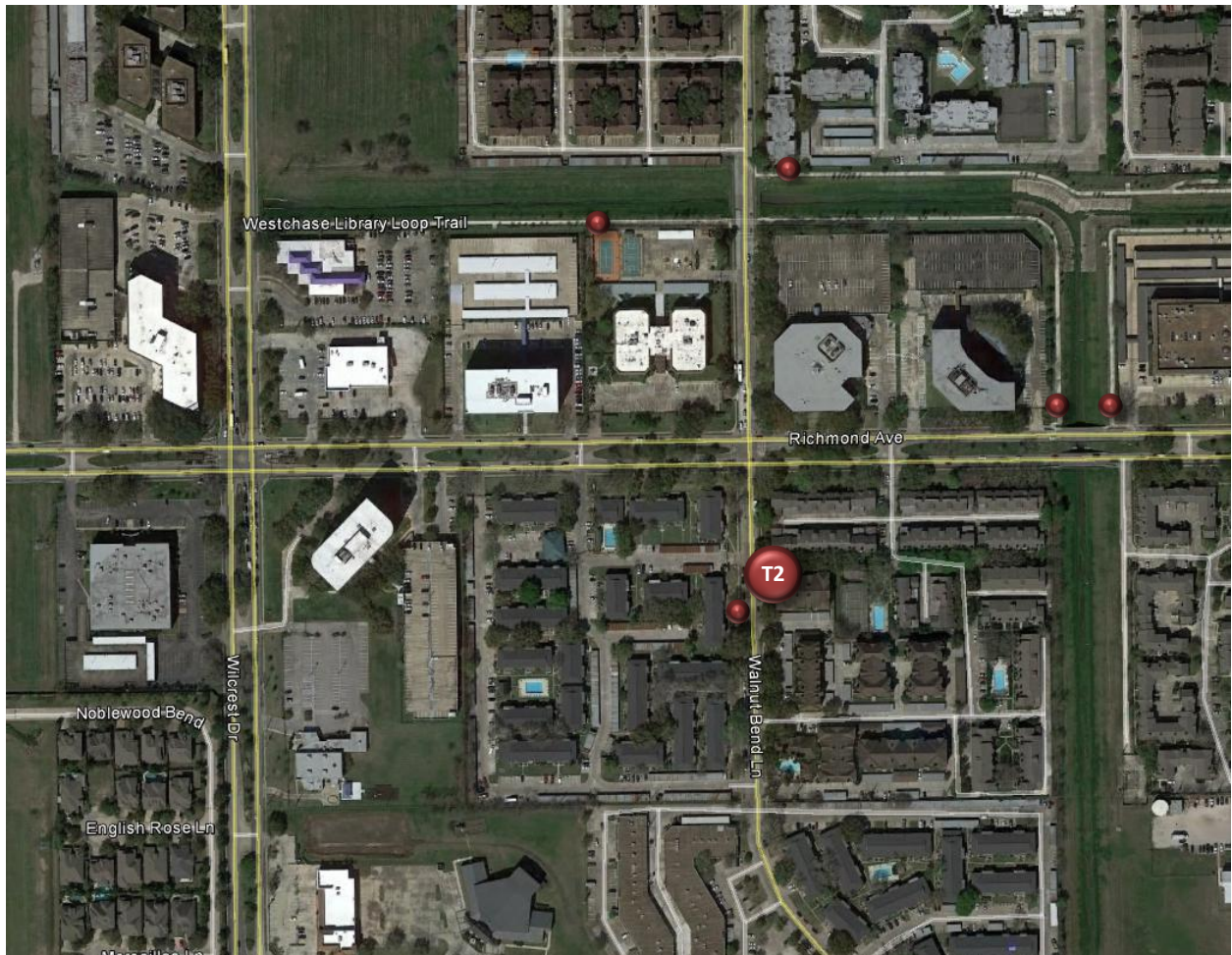
Counter T2

Walnut Bend Lane Northbound South of Richmond Avenue

Location Information		
Location Name	Walnut Bend Lane Northbound South of Richmond Avenue	
Location Description	Sidewalk along Walnut Bend Lane Northbound South of Richmond Avenue	
Jurisdiction	City of Houston/Westchase District	
Agency Deployed	Westchase District	
GPS Coordinates	29°43'37.28"N, 95°34'4.72"W	
Surrounding Land Uses	North	Multi-Family Residential, Office
	South	Multi-Family Residential, Office
	East	Multi-Family Residential
	West	Multi-Family Residential, Office
What object was device secured to?	Post with Electric Meter	
Sidewalk Width	4'	
Buffer Width	4'	
Street Width	Two-Lane Undivided Roadway (with Parking Lanes on Both Sides)	
Parallel Parking	Yes	
Landscaping or Trees	Yes	
Sidewalk Pavement Type	Concrete	
ADA Ramps	Yes	
Sidewalk Condition	Fair (Some Unevenness and Debris on Sidewalk)	
Speed Limit	30 miles per hour	
Street Lighting	Yes	
Street Traffic Volume	Not Available	
Transit	Yes (METRO Bus Stop 180' North at Richmond Avenue/Walnut Bend Lane)	
Shade	Yes	
Have counts been collected by H-GAC at this location before?	No	
Notes	Funding has been allocated through the H-GAC 2017-2020 Transportation Improvement Program (TIP) to reconstruct Walnut Bend Lane between Westheimer Road and Westpark Drive. New sidewalks, pedestrian ramps, lighting, landscaping, and other improvements are planned and expected in FY2018.	

Trends
<ul style="list-style-type: none"> • Usage tends to be higher on weekdays (87 users/day) than during weekends (64 users/day). • On weekdays, usage is highest in the evening (6:00 p.m. – 8:00 p.m.). • During weekends, usage is highest in the late morning (10:00 a.m. – 11:00 a.m.).

Location Information: Map



Location Information: Photos



Image 17: Sidewalk along Walnut Bend Lane Northbound South of Richmond Avenue Facing North



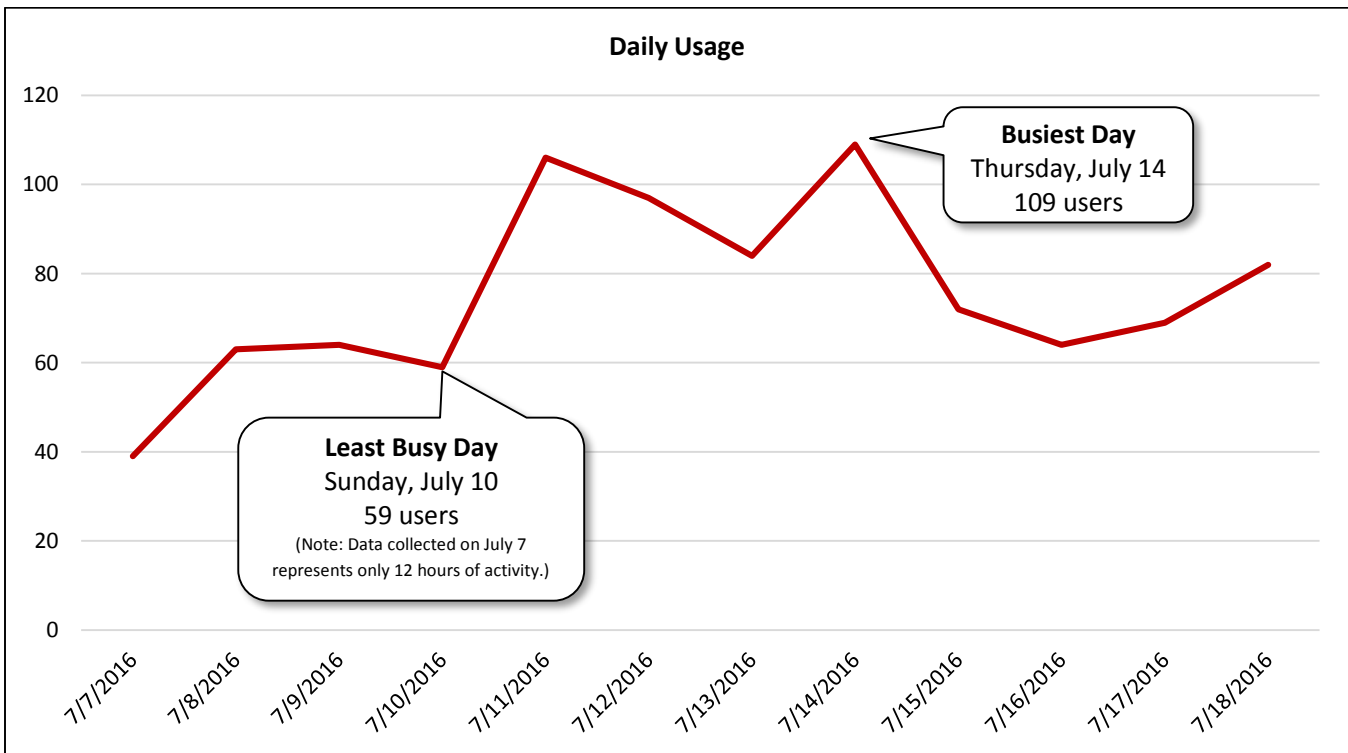
Image 18: Sidewalk along Walnut Bend Lane Northbound South of Richmond Avenue Facing South

Daily Usage Walnut Bend Lane Northbound South of Richmond Avenue				
Date	Users	Select Weather Data*		
		High Temperature (°F)	Low Temperature (°F)	Precipitation (inches)
Thursday, July 7, 2016 (beginning at 12:00 p.m.)	39	95	79	0
Friday, July 8, 2016	63	95	79	0
Saturday, July 9, 2016	64	95	75	0.03
Sunday, July 10, 2016	59	93	77	0
Monday, July 11, 2016	106	95	79	0
Tuesday, July 12, 2016	97	96	77	0
Wednesday, July 13, 2016	84	95	79	0
Thursday, July 14, 2016	109	96	78	0
Friday, July 15, 2016	72	98	77	0
Saturday, July 16, 2016	64	96	73	0
Sunday, July 17, 2016	69	93	75	0.03
Monday, July 18, 2016	82	93	75	0

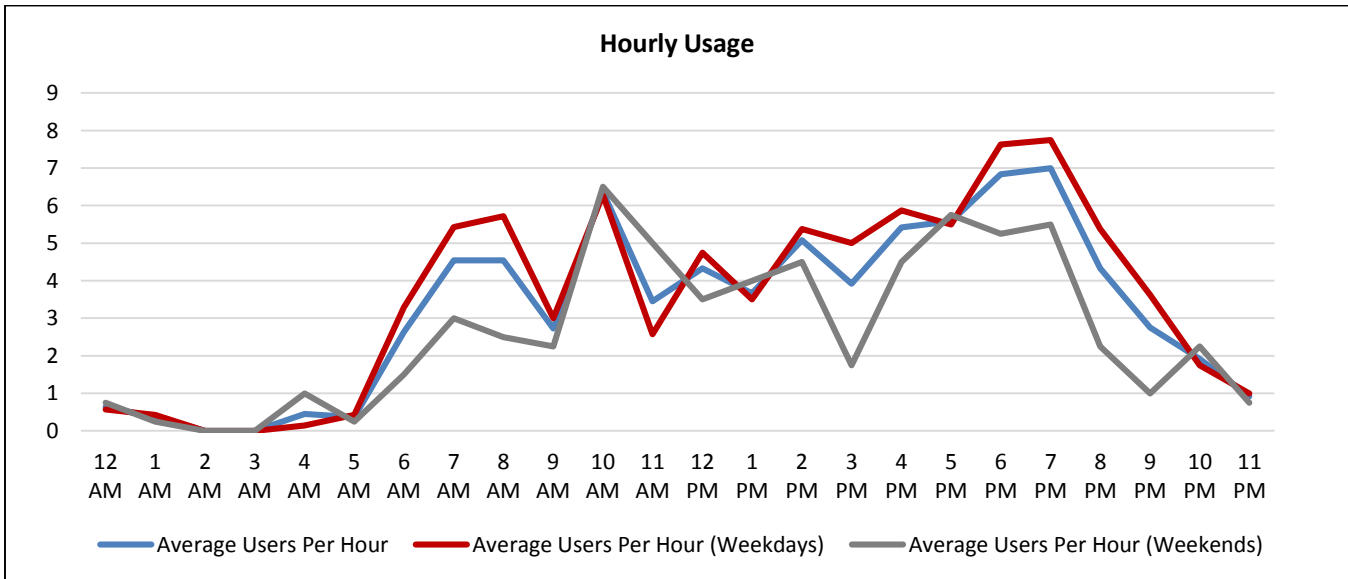
Total	908
Average Daily Usage	79
Average Daily Usage (Weekday)	87
Average Daily Usage (Weekend)	64

Notes
Counter T2 began collecting data at 12:00 p.m. on Thursday, July 7, 2016.

*Weather conditions recorded at KSGR.



Hourly Usage			
Walnut Bend Lane Northbound South of Richmond Avenue			
Time of Day	Average Users Per Hour	Average Users Per Hour (Weekdays)	Average Users Per Hour (Weekends)
12:00 a.m.	0.6	0.6	0.8
1:00 a.m.	0.4	0.4	0.3
2:00 a.m.	0.0	0.0	0.0
3:00 a.m.	0.0	0.0	0.0
4:00 a.m.	0.5	0.1	1.0
5:00 a.m.	0.4	0.4	0.3
6:00 a.m.	2.6	3.3	1.5
7:00 a.m.	4.5	5.4	3.0
8:00 a.m.	4.5	5.7	2.5
9:00 a.m.	2.7	3.0	2.3
10:00 a.m.	6.4	6.3	6.5
11:00 a.m.	3.5	2.6	5.0
12:00 p.m.	4.3	4.8	3.5
1:00 p.m.	3.7	3.5	4.0
2:00 p.m.	5.1	5.4	4.5
3:00 p.m.	3.9	5.0	1.8
4:00 p.m.	5.4	5.9	4.5
5:00 p.m.	5.6	5.5	5.8
6:00 p.m.	6.8	7.6	5.3
7:00 p.m.	7.0	7.8	5.5
8:00 p.m.	4.3	5.4	2.3
9:00 p.m.	2.8	3.6	1.0
10:00 p.m.	1.9	1.8	2.3
11:00 p.m.	0.9	1.0	0.8



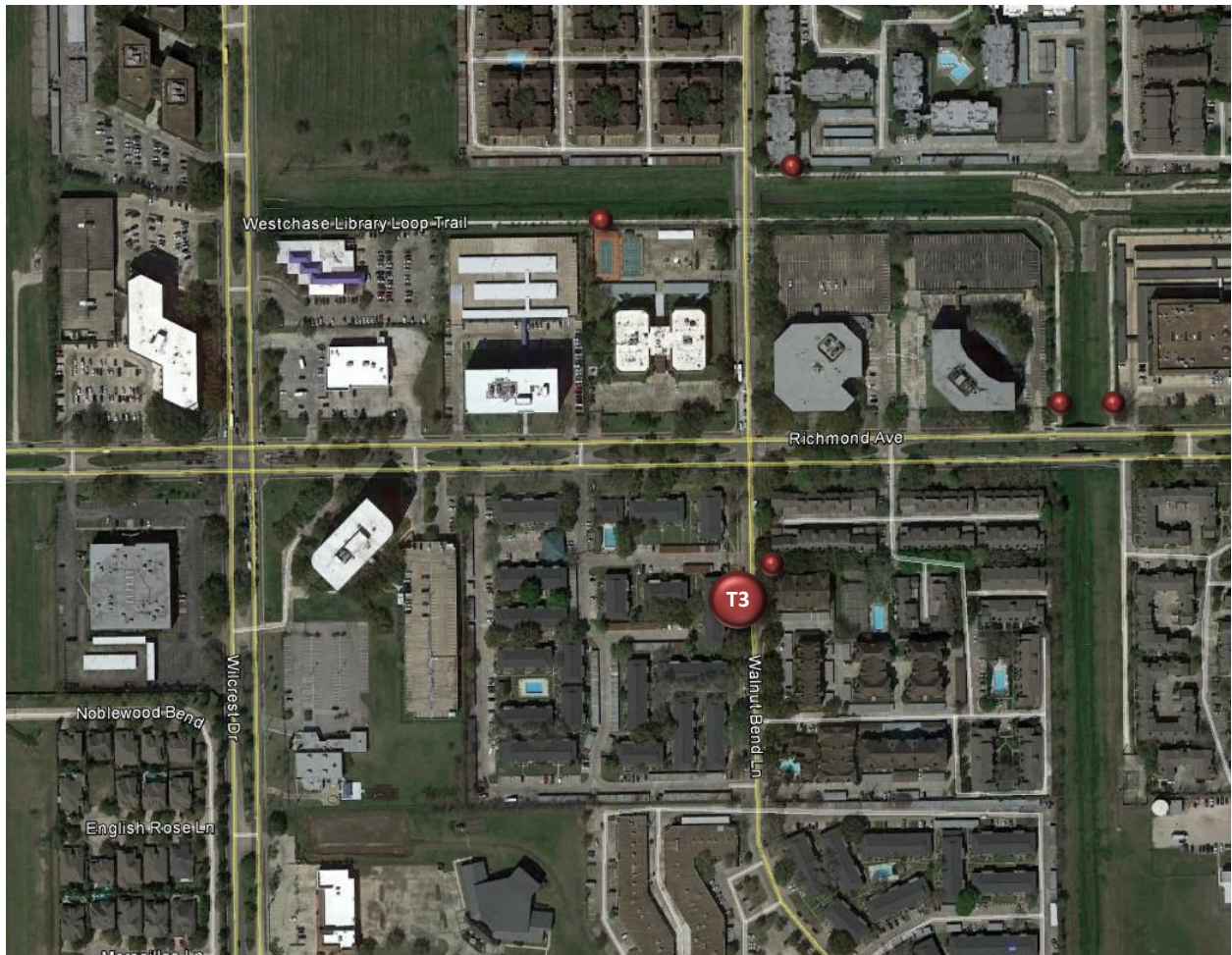
Counter T3

Walnut Bend Lane Southbound South of Richmond Avenue

Location Information		
Location Name	Walnut Bend Lane Southbound South of Richmond Avenue	
Location Description	Sidewalk along Walnut Bend Lane Southbound South of Richmond Avenue	
Jurisdiction	City of Houston/Westchase District	
Agency Deployed	Westchase District	
GPS Coordinates	29°43'36.61"N, 95°34'5.06"W	
Surrounding Land Uses	North	Multi-Family Residential, Office
	South	Multi-Family Residential, Office
	East	Multi-Family Residential
	West	Multi-Family Residential
What object was device secured to?	Light Post (#265697)	
Sidewalk Width	4'	
Buffer Width	4'	
Street Width	Two-Lane Undivided Roadway (with Parking Lanes on Both Sides)	
Parallel Parking	Yes	
Landscaping or Trees	Yes	
Sidewalk Pavement Type	Concrete	
ADA Ramps	Yes	
Sidewalk Condition	Fair (Some Unevenness)	
Speed Limit	30 miles per hour	
Street Lighting	Yes	
Street Traffic Volume	Not Available	
Transit	Yes (METRO Bus Stop 280' North at Richmond Avenue/Walnut Bend Lane)	
Shade	Yes	
Have counts been collected by H-GAC at this location before?	No	
Notes	Funding has been allocated through the H-GAC 2017-2020 Transportation Improvement Program (TIP) to reconstruct Walnut Bend Lane between Westheimer Road and Westpark Drive. New sidewalks, pedestrian ramps, lighting, landscaping, and other improvements are planned and expected in FY2018.	

Trends
<ul style="list-style-type: none"> Usage tends to be higher on weekdays (63 users/day) than during weekends (48 users/day). On weekdays, usage varies throughout the day, with increased usage in the late morning (10:00 a.m. – 11:00 a.m.), late afternoon (4:00 p.m. – 5:00 p.m.), and later in the evening (8:00 p.m. – 9:00 p.m.). During weekends, usage is highest at night (10:00 p.m. – 11:00 p.m.).

Location Information: Map



Location Information: Photos



Image 19: Sidewalk along Walnut Bend Lane Southbound South of Richmond Avenue Facing North



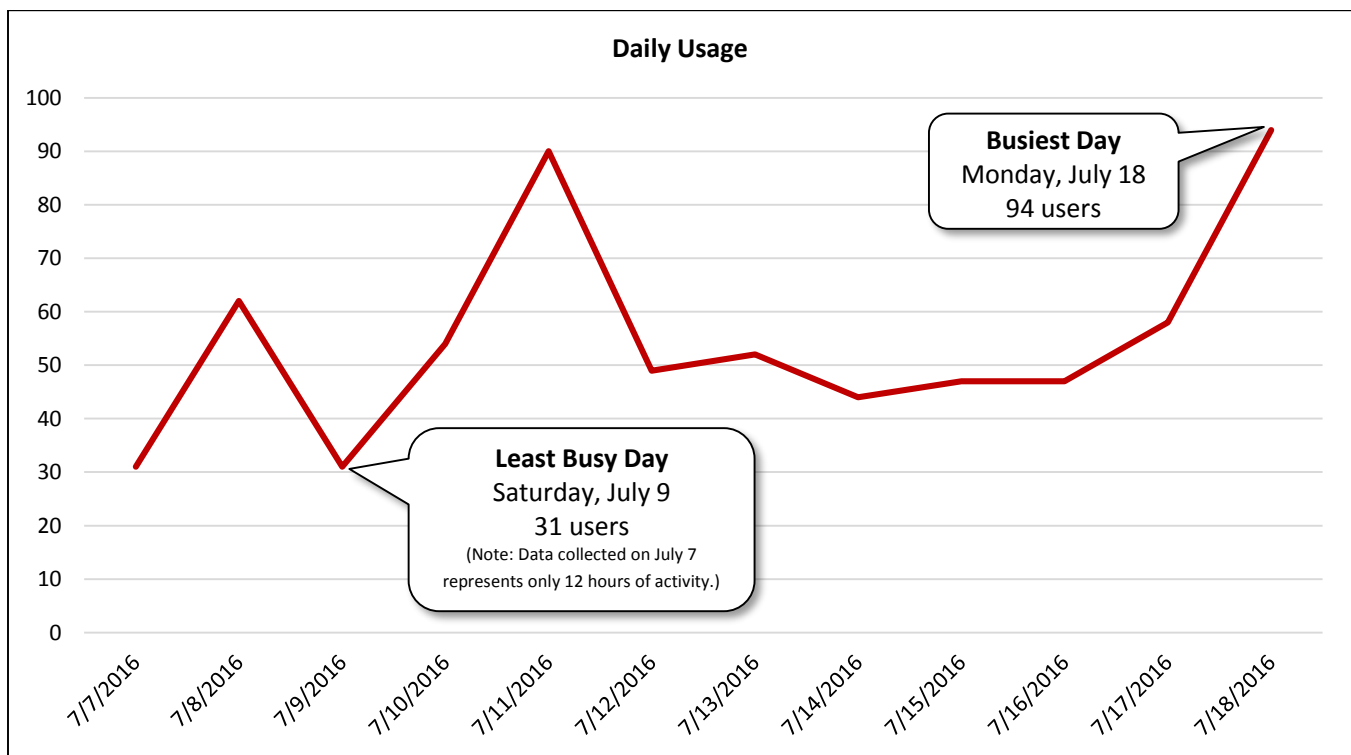
Image 20: Sidewalk along Walnut Bend Lane Southbound South of Richmond Avenue Facing South

Daily Usage				
Walnut Bend Lane Southbound South of Richmond Avenue				
Date	Users	Select Weather Data*		
		High Temperature (°F)	Low Temperature (°F)	Precipitation (inches)
Thursday, July 7, 2016 (beginning at 12:00 p.m.)	31	95	79	0
Friday, July 8, 2016	62	95	79	0
Saturday, July 9, 2016	31	95	75	0.03
Sunday, July 10, 2016	54	93	77	0
Monday, July 11, 2016	90	95	79	0
Tuesday, July 12, 2016	49	96	77	0
Wednesday, July 13, 2016	52	95	79	0
Thursday, July 14, 2016	44	96	78	0
Friday, July 15, 2016	47	98	77	0
Saturday, July 16, 2016	47	96	73	0
Sunday, July 17, 2016	58	93	75	0.03
Monday, July 18, 2016	94	93	75	0

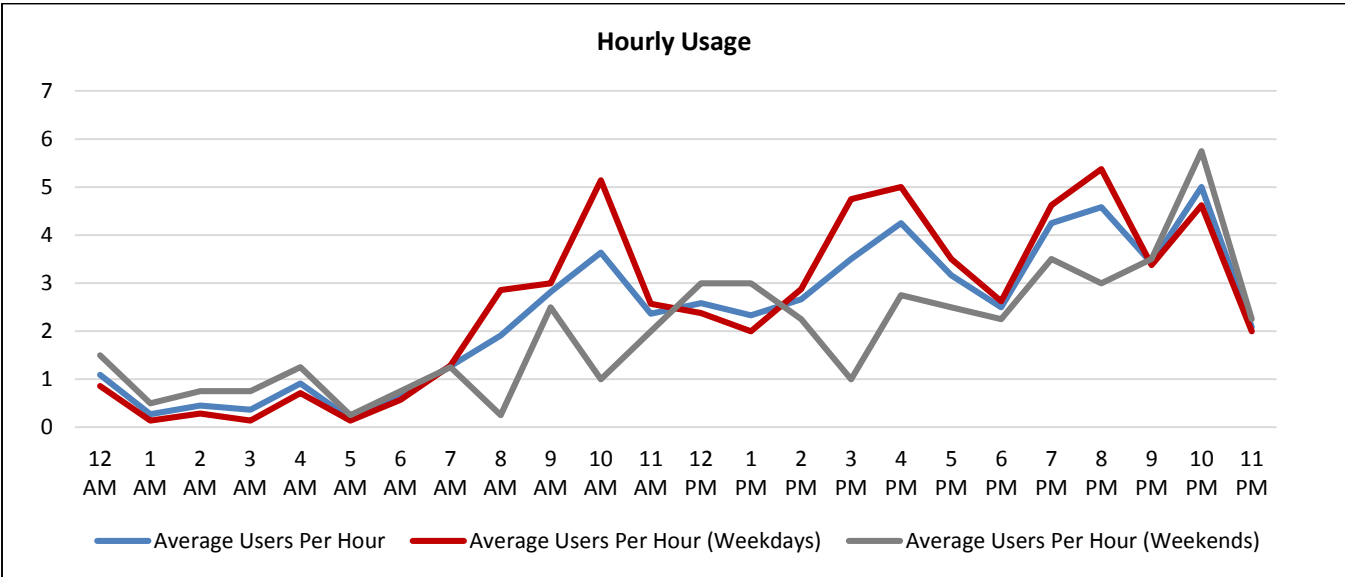
Total	659
Average Daily Usage	57
Average Daily Usage (Weekday)	63
Average Daily Usage (Weekend)	48

Notes
Counter T3 began collecting data at 12:00 p.m. on Thursday, July 7, 2016.

*Weather conditions recorded at KSGR.



Hourly Usage			
Walnut Bend Lane Southbound South of Richmond Avenue			
Time of Day	Average Users Per Hour	Average Users Per Hour (Weekdays)	Average Users Per Hour (Weekends)
12:00 a.m.	1.1	0.9	1.5
1:00 a.m.	0.3	0.1	0.5
2:00 a.m.	0.5	0.3	0.8
3:00 a.m.	0.4	0.1	0.8
4:00 a.m.	0.9	0.7	1.3
5:00 a.m.	0.2	0.1	0.3
6:00 a.m.	0.6	0.6	0.8
7:00 a.m.	1.3	1.3	1.3
8:00 a.m.	1.9	2.9	0.3
9:00 a.m.	2.8	3.0	2.5
10:00 a.m.	3.6	5.1	1.0
11:00 a.m.	2.4	2.6	2.0
12:00 p.m.	2.6	2.4	3.0
1:00 p.m.	2.3	2.0	3.0
2:00 p.m.	2.7	2.9	2.3
3:00 p.m.	3.5	4.8	1.0
4:00 p.m.	4.3	5.0	2.8
5:00 p.m.	3.2	3.5	2.5
6:00 p.m.	2.5	2.6	2.3
7:00 p.m.	4.3	4.6	3.5
8:00 p.m.	4.6	5.4	3.0
9:00 p.m.	3.4	3.4	3.5
10:00 p.m.	5.0	4.6	5.8
11:00 p.m.	2.1	2.0	2.3



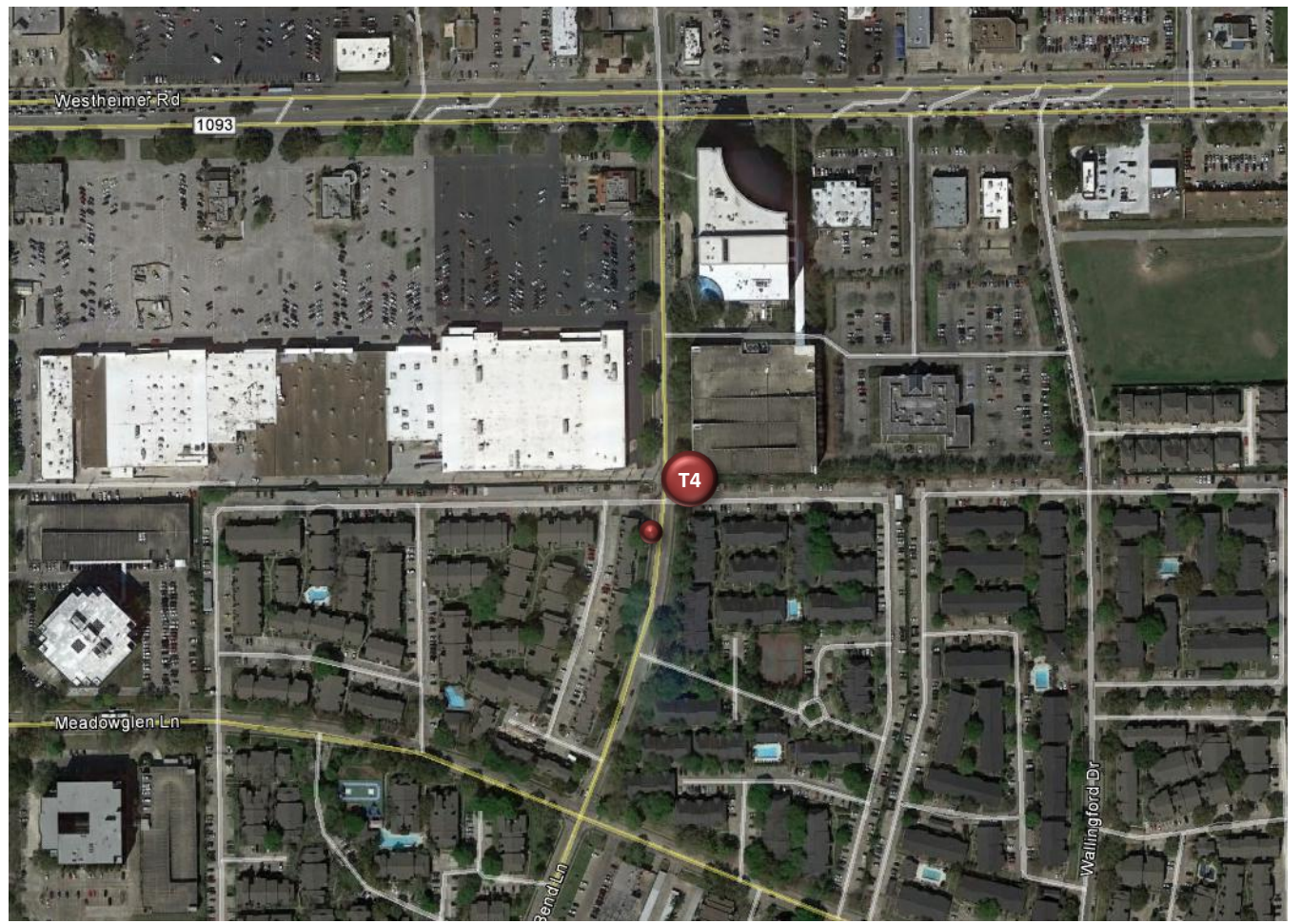
Counter T4

Walnut Bend Lane Northbound South of Westheimer Road

Location Information		
Location Name	Walnut Bend Lane Northbound South of Westheimer Road	
Location Description	Sidewalk along Walnut Bend Lane Northbound South of Westheimer Road	
Jurisdiction	City of Houston/Westchase District	
Agency Deployed	Westchase District	
GPS Coordinates	29°44'4.12"N, 95°34'0.51"W	
Surrounding Land Uses	North	Office, Retail
	South	Multi-Family Residential, Retail
	East	Multi-Family Residential, Office, Retail
	West	Multi-Family Residential, Retail
What object was device secured to?	Sign Post (Pedestrian Crossing Ahead)	
Sidewalk Width	4'	
Buffer Width	4'	
Street Width	Two-Lane Undivided Roadway (with Parking on Both Sides South of Counter T4)	
Parallel Parking	No	
Landscaping or Trees	Yes	
Sidewalk Pavement Type	Concrete	
ADA Ramps	Yes	
Sidewalk Condition	Good	
Speed Limit	30 miles per hour	
Street Lighting	Yes	
Street Traffic Volume	Not Available	
Transit	Yes (METRO Bus Stop 50' South at 2801 Walnut Bend Lane)	
Shade	Yes	
Have counts been collected by H-GAC at this location before?	No	
Notes	Funding has been allocated through the H-GAC 2017-2020 Transportation Improvement Program (TIP) to reconstruct Walnut Bend Lane between Westheimer Road and Westpark Drive. New sidewalks, pedestrian ramps, lighting, landscaping, and other improvements are planned and expected in FY2018.	

Trends
<ul style="list-style-type: none"> • Usage tends to be higher on weekdays (74 users/day) than during weekends (52 users/day). • On weekdays, usage is highest in the evening (5:00 p.m. – 6:00 p.m.). • During weekends, usage is highest in the evening (6:00 p.m. – 7:00 p.m.).

Location Information: Map



Location Information: Photos



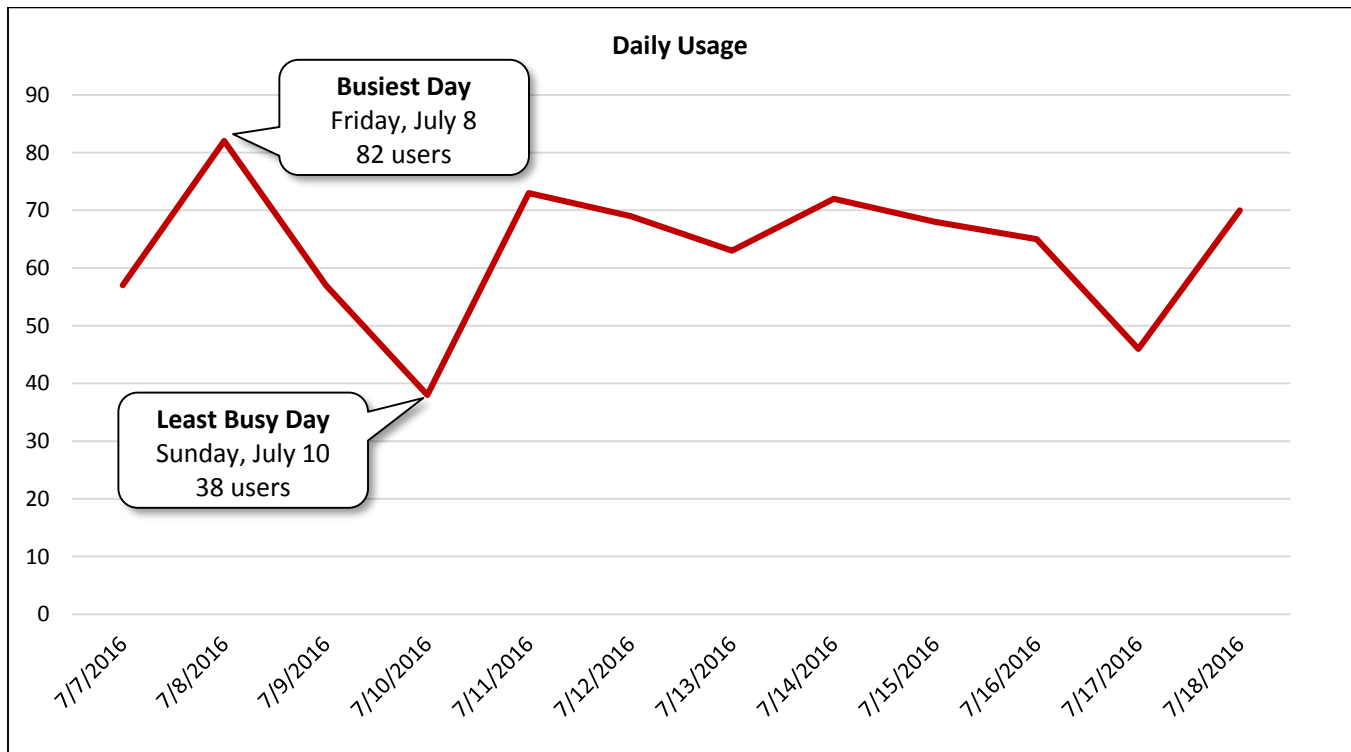
Image 21: Sidewalk along Walnut Bend Lane Northbound South of Westheimer Road Facing North



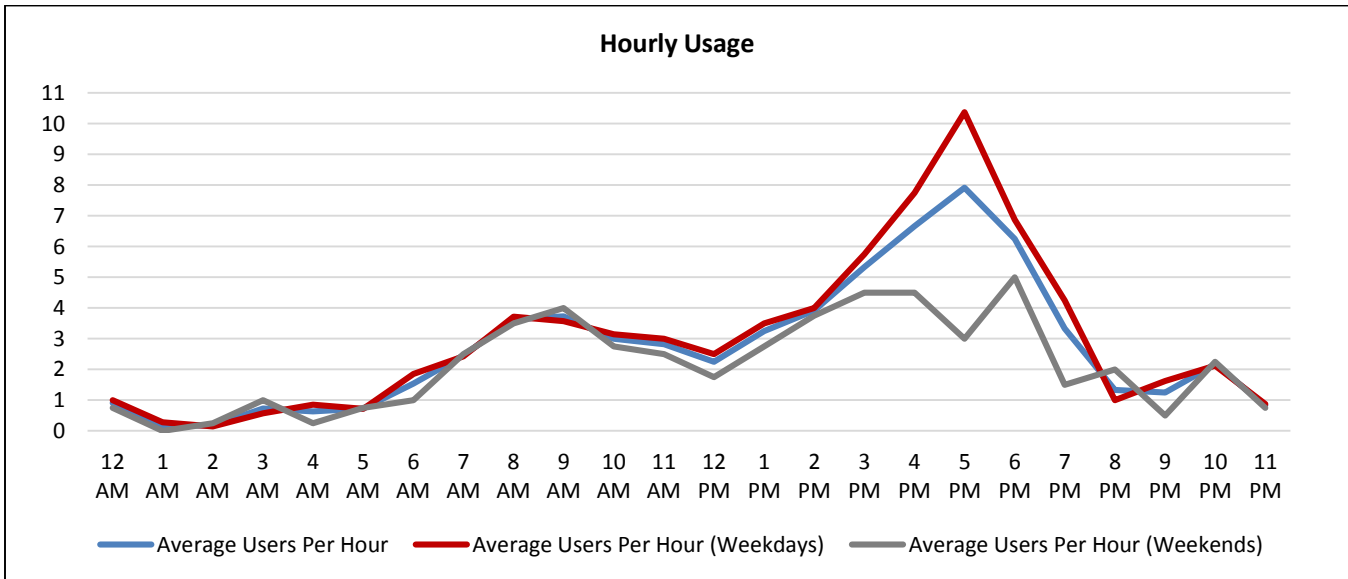
Image 22: Sidewalk along Walnut Bend Lane Northbound South of Westheimer Road Facing South

Daily Usage Walnut Bend Lane Northbound South of Westheimer Road				
Date	Users	Select Weather Data*		
		High Temperature (°F)	Low Temperature (°F)	Precipitation (inches)
Thursday, July 7, 2016 (beginning at 12:00 p.m.)	57	95	79	0
Friday, July 8, 2016	82	95	79	0
Saturday, July 9, 2016	57	95	75	0.03
Sunday, July 10, 2016	38	93	77	0
Monday, July 11, 2016	73	95	79	0
Tuesday, July 12, 2016	69	96	77	0
Wednesday, July 13, 2016	63	95	79	0
Thursday, July 14, 2016	72	96	78	0
Friday, July 15, 2016	68	98	77	0
Saturday, July 16, 2016	65	96	73	0
Sunday, July 17, 2016	46	93	75	0.03
Monday, July 18, 2016	70	93	75	0
Total	760			
Average Daily Usage	66			
Average Daily Usage (Weekday)	74			
Average Daily Usage (Weekend)	52			
		Notes		
		Counter T4 began collecting data at 12:00 p.m. on Thursday, July 7, 2016.		

*Weather conditions recorded at KSGR.



Hourly Usage			
Walnut Bend Lane Northbound South of Westheimer Road			
Time of Day	Average Users Per Hour	Average Users Per Hour (Weekdays)	Average Users Per Hour (Weekends)
12:00 a.m.	0.9	1.0	0.8
1:00 a.m.	0.2	0.3	0.0
2:00 a.m.	0.2	0.1	0.3
3:00 a.m.	0.7	0.6	1.0
4:00 a.m.	0.6	0.9	0.3
5:00 a.m.	0.7	0.7	0.8
6:00 a.m.	1.5	1.9	1.0
7:00 a.m.	2.5	2.4	2.5
8:00 a.m.	3.6	3.7	3.5
9:00 a.m.	3.7	3.6	4.0
10:00 a.m.	3.0	3.1	2.8
11:00 a.m.	2.8	3.0	2.5
12:00 p.m.	2.3	2.5	1.8
1:00 p.m.	3.3	3.5	2.8
2:00 p.m.	3.9	4.0	3.8
3:00 p.m.	5.3	5.8	4.5
4:00 p.m.	6.7	7.8	4.5
5:00 p.m.	7.9	10.4	3.0
6:00 p.m.	6.3	6.9	5.0
7:00 p.m.	3.3	4.3	1.5
8:00 p.m.	1.3	1.0	2.0
9:00 p.m.	1.3	1.6	0.5
10:00 p.m.	2.2	2.1	2.3
11:00 p.m.	0.8	0.9	0.8



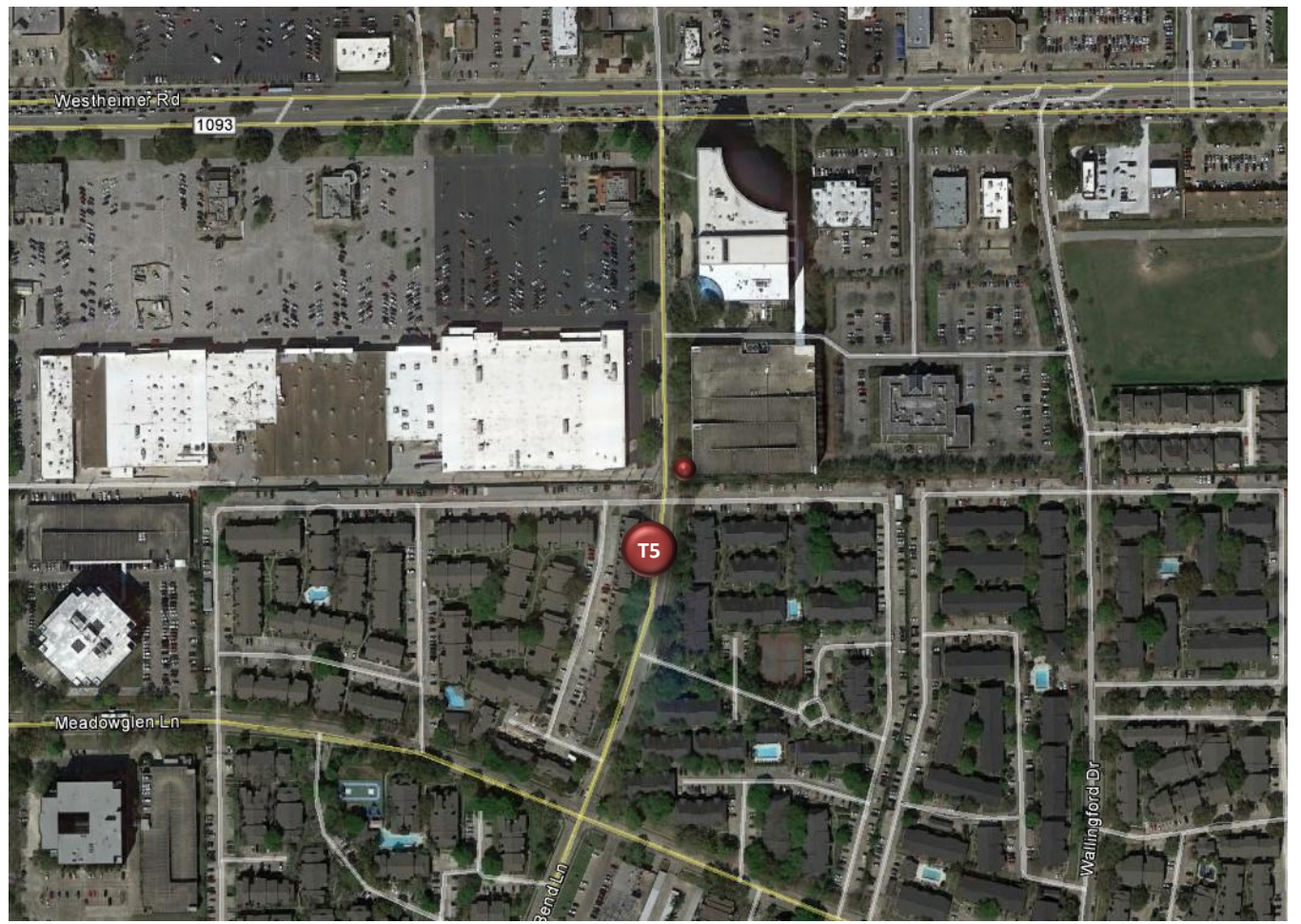
Counter T5

Walnut Bend Lane Southbound South of Westheimer Road

Location Information		
Location Name	Walnut Bend Lane Southbound South of Westheimer Road	
Location Description	Sidewalk along Walnut Bend Lane Southbound South of Westheimer Road	
Jurisdiction	City of Houston/Westchase District	
Agency Deployed	Westchase District	
GPS Coordinates	29°44'4.12"N, 95°34'0.51"W	
Surrounding Land Uses	North	Office, Retail
	South	Multi-Family Residential, Retail
	East	Multi-Family Residential, Office, Retail
	West	Multi-Family Residential, Retail
What object was device secured to?	Sign Post (No Parking)	
Sidewalk Width	4'	
Buffer Width	4'	
Street Width	Two-Lane Undivided Roadway (with Parking on Both Sides South of Counter T5)	
Parallel Parking	No	
Landscaping or Trees	Yes	
Sidewalk Pavement Type	Concrete	
ADA Ramps	Yes	
Sidewalk Condition	Good	
Speed Limit	30 miles per hour	
Street Lighting	Yes	
Street Traffic Volume	Not Available	
Transit	Yes (METRO Bus Stop 30' South along Walnut Bend Lane)	
Shade	Yes	
Have counts been collected by H-GAC at this location before?	No	
Notes	Funding has been allocated through the H-GAC 2017-2020 Transportation Improvement Program (TIP) to reconstruct Walnut Bend Lane between Westheimer Road and Westpark Drive. New sidewalks, pedestrian ramps, lighting, landscaping, and other improvements are planned and expected in FY2018.	

Trends
<ul style="list-style-type: none"> • Usage tends to be much higher on weekdays (228 users/day) than during weekends (167 users/day). • On weekdays, usage is highest in the afternoon hours, peaking between 1:00 p.m. and 2:00 p.m. • During weekends, usage is highest in the evening (5:00 p.m. – 7:00 p.m.).

Location Information: Map



Location Information: Photos



Image 23: Sidewalk along Walnut Bend Lane Southbound South of Westheimer Road Facing North



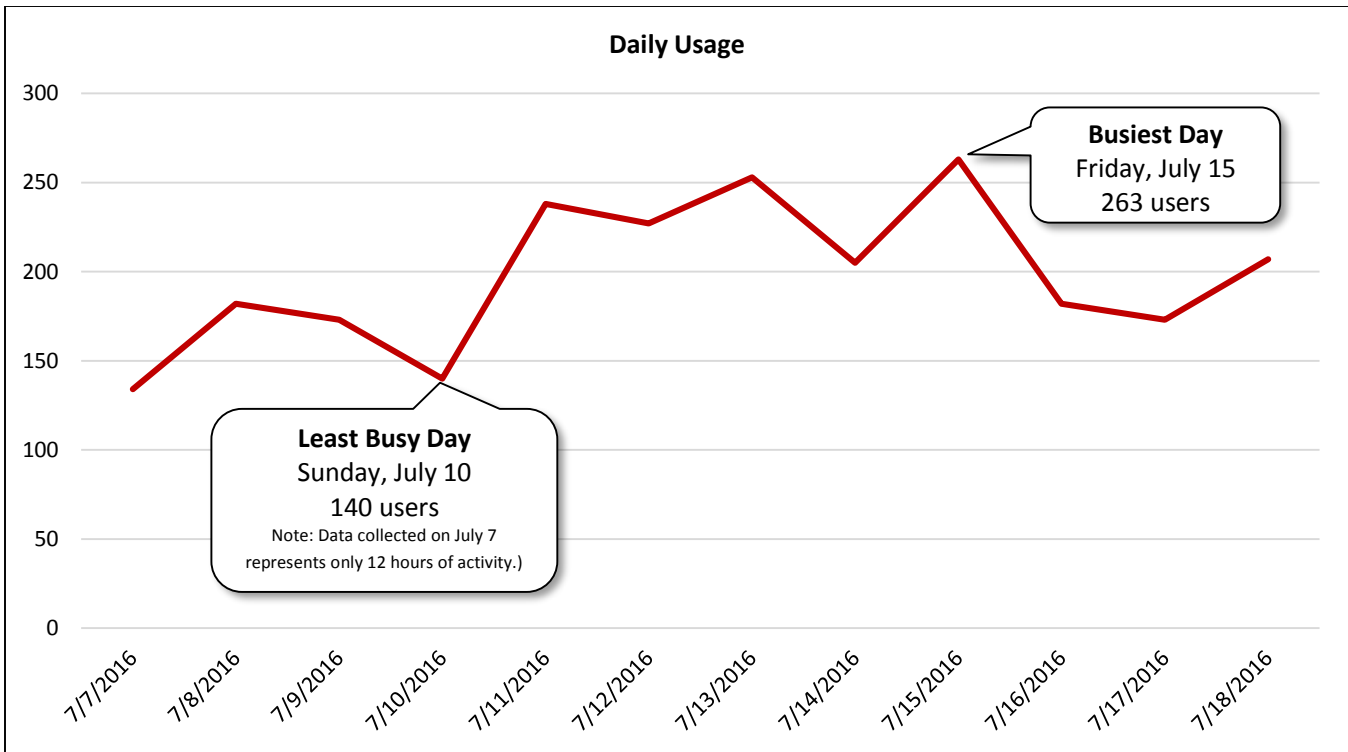
Image 24: Sidewalk along Walnut Bend Lane Southbound South of Westheimer Road Facing South

Daily Usage				
Walnut Bend Lane Southbound South of Westheimer Road				
Date	Users	Select Weather Data*		
		High Temperature (°F)	Low Temperature (°F)	Precipitation (inches)
Thursday, July 7, 2016 (beginning at 12:00 p.m.)	134	95	79	0
Friday, July 8, 2016	182	95	79	0
Saturday, July 9, 2016	173	95	75	0.03
Sunday, July 10, 2016	140	93	77	0
Monday, July 11, 2016	238	95	79	0
Tuesday, July 12, 2016	227	96	77	0
Wednesday, July 13, 2016	253	95	79	0
Thursday, July 14, 2016	205	96	78	0
Friday, July 15, 2016	263	98	77	0
Saturday, July 16, 2016	182	96	73	0
Sunday, July 17, 2016	173	93	75	0.03
Monday, July 18, 2016	207	93	75	0

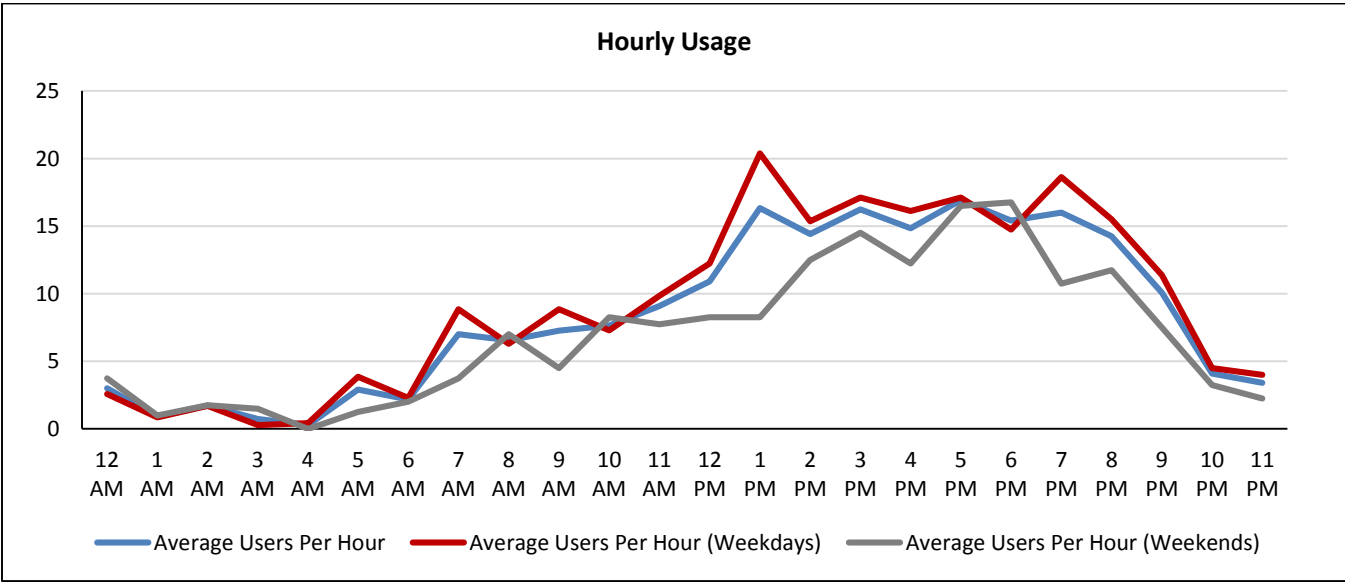
Total	2,377
Average Daily Usage	207
Average Daily Usage (Weekday)	228
Average Daily Usage (Weekend)	167

Notes
Counter T5 began collecting data at 12:00 p.m. on Thursday, July 7, 2016.

*Weather conditions recorded at KSGR.



Hourly Usage			
Walnut Bend Lane Southbound South of Westheimer Road			
Time of Day	Average Users Per Hour	Average Users Per Hour (Weekdays)	Average Users Per Hour (Weekends)
12:00 a.m.	3.0	2.6	3.8
1:00 a.m.	0.9	0.9	1.0
2:00 a.m.	1.7	1.7	1.8
3:00 a.m.	0.7	0.3	1.5
4:00 a.m.	0.3	0.4	0.0
5:00 a.m.	2.9	3.9	1.3
6:00 a.m.	2.2	2.3	2.0
7:00 a.m.	7.0	8.9	3.8
8:00 a.m.	6.5	6.3	7.0
9:00 a.m.	7.3	8.9	4.5
10:00 a.m.	7.6	7.3	8.3
11:00 a.m.	9.1	9.9	7.8
12:00 p.m.	10.9	12.3	8.3
1:00 p.m.	16.3	20.4	8.3
2:00 p.m.	14.4	15.4	12.5
3:00 p.m.	16.3	17.1	14.5
4:00 p.m.	14.8	16.1	12.3
5:00 p.m.	16.9	17.1	16.5
6:00 p.m.	15.4	14.8	16.8
7:00 p.m.	16.0	18.6	10.8
8:00 p.m.	14.3	15.5	11.8
9:00 p.m.	10.1	11.4	7.5
10:00 p.m.	4.1	4.5	3.3
11:00 p.m.	3.4	4.0	2.3



Participants

Westchase District

<http://westchasedistrict.com/>

Houston-Galveston Area Council: Pedestrian-Bicyclist Planning

www.h-gac.com/go/pedbike

Texas Transportation Institute

<http://tti.tamu.edu/>