



# H-GAC'S Regional Urban Forestry Summit

---

## TREES INTO GATEWAY COMMUNITIES

### THE ROLE OF LANDSCAPE ARCHITECTURE IN DEVELOPING A SENSE OF PLACE

Diana Wilson, R.L.A.

Director of Landscape Architecture; *BURDITT*



# Landscape Architecture and Planning Department

---

- Streetscape and Urban Design
- International Projects
- Hotels and Resort Master Planning
- Commercial Development
- Thematic Garden Design
- Department of Defense and Government Agencies
- Residential Design
- Churches and Public Parks
- Educational Facilities

Diana L. Wilson, R.L.A.



- Trees are often linked to a community's history
- The Urban Forest is recognized as a valuable design element and a definable “branding” opportunity



# Community Planning Process

---

## Components

- **Paths** – Ways of **Movement** within an area.
- **Edges** – Linear Elements.
- **Districts** – Areas that can **Consciously** be **Entered**.  
**“Sense of Place”**  
Historic French Quarter
- **Nodes** – **Specific Points** in a City  
Closely **Associated** with **Paths** and found at **Transition Points** between districts.  
Thematic in nature  
Times Square at 42<sup>nd</sup> Street  
Grand Mall in D.C.
- **Landmarks** – **Single Elements** / Reference Points  
Eiffel Tower  
Washington Monument  
Medieval Church Spire



# Community Planning Process

## Paths



Garden



Suburban

## Edges



River or Mountains

## Districts



River Walk



# Community Planning Process

---

## Nodes



Times Square

## Landmarks



Eiffel Tower



# Community Planning Process

---

## Methods

### **Axial Design**

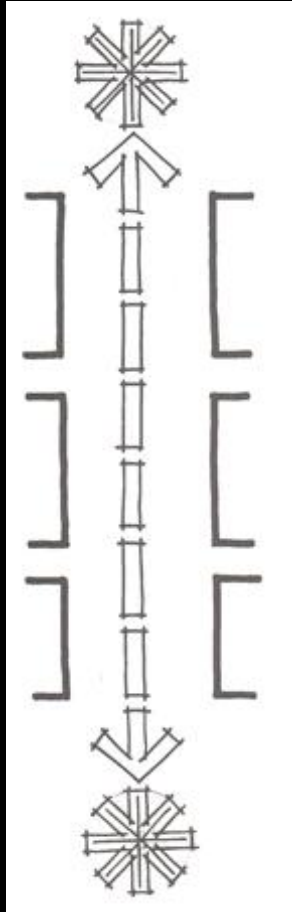
Monticello

- **Hierarchy or gradation of features**  
“Outdoor Rooms”
- **Transition Elements**
  - **Overlap Areas** crucial to way finding and a sense of space.
  - **Repetition** of Design Elements; paving or planting.  
“Humans must be able to organize their environment to function effectively the arrangement of the visual field is crucial to **Way Finding** and a **Sense of Place**”
- **Dominant Features**  
Focal Point gives a place purpose and unity.

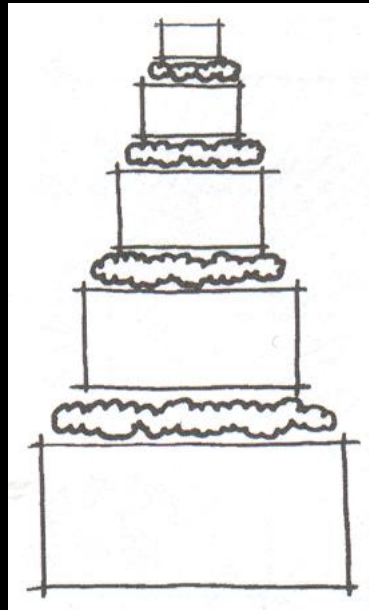


# Community Planning Process

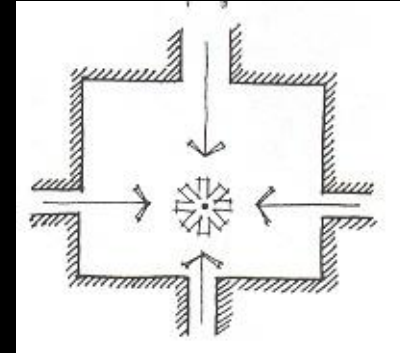
## Methods



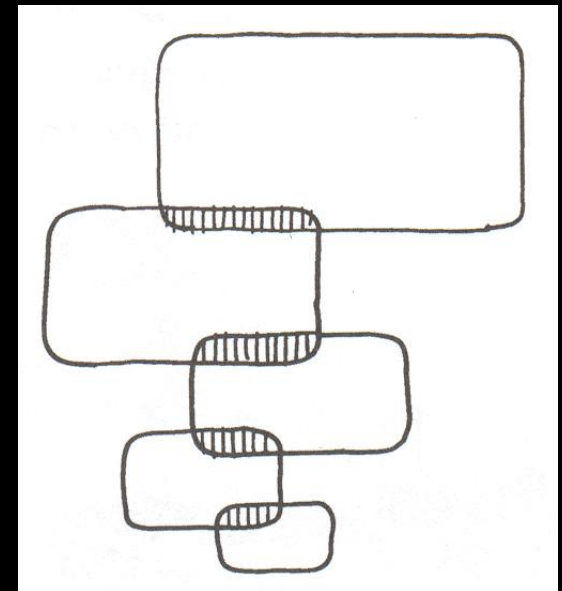
**Axial Design**



**Transition Elements**



**Dominant Element**



**Hierarchy / Gradation**





# Community Planning Process

## Methods

**Sense of Enclosure** – Perhaps this single **Most Important** feature in the design of community spaces.



**Unimproved** Suburban Intersection



**Improved** Suburban Intersection



# Community Planning Process

## Spatial Components

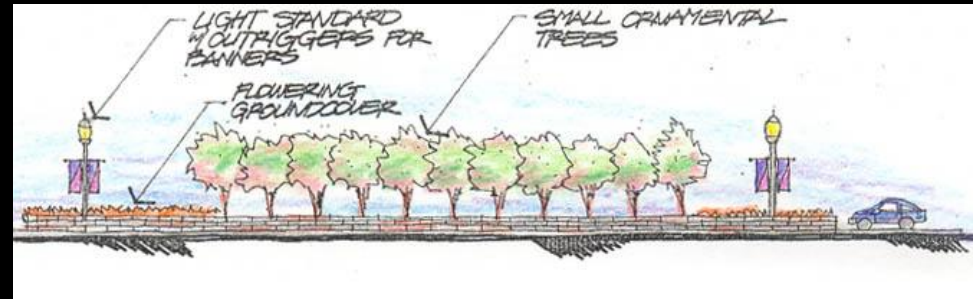
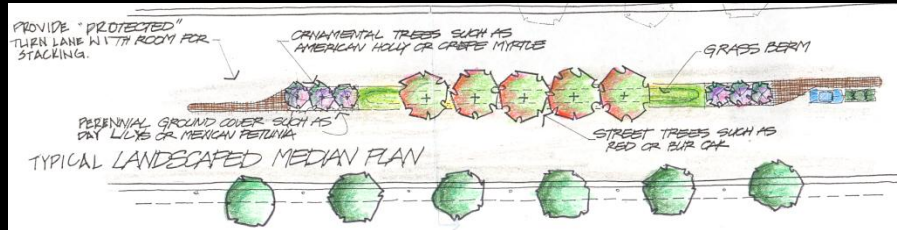
- **Circulation**
- **Open Space**
- **Structures**

**Circulation, Open Space** and **Structures** are the primary elements of spatial design. They are manipulated by the designer to **Create Order, Context** and **Special Places** for human activity. No matter what the project the design process exist of arranging these three elements.



# Community Planning Process

## Streetscape and Urban Design



GATEWAY OPPORTUNITY

RESIDENTIAL NEIGHBORHOOD CONTEXT

URBAN EDGE

ALDINE WESTFIELD SITE ENTRY

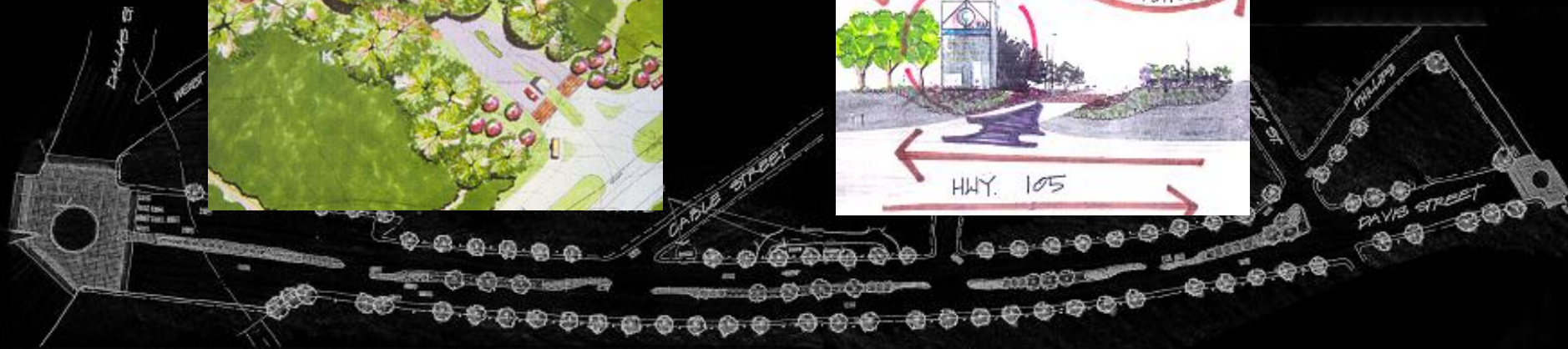
CONSIDER: SWIRL, SPECIAL PAVING, ANNUAL COVER OR PERENNIAL COVER

SMITH ELEMENTARY

CONSIDER: SWIRL, SPECIAL PAVING, ANNUAL COVER OR PERENNIAL COVER

GREENWASH DRIVE

CONSIDER: SWIRL, SPECIAL PAVING, ANNUAL COVER OR PERENNIAL COVER





# Community Planning Process

## City of Montgomery

The City of Montgomery is a historic community with a rich legacy. Known as the Birthplace of the Texas Flag, Montgomery is also a growing and bustling area of the County. Like many smaller cities, it hopes to further define its unique character to visitors, tourists, and those considering residence in the area.

Burditt's team developed site opportunity analysis diagrams, rendered design plan sketches, and master plan concepts for a Town Center, Gateway Signage opportunities, and a historic walking path with streetscape design guidelines.

Montgomery also has a rich urban forest made up of mature specimen trees. With new development comes the need for new utilities and other infrastructure that can damage or destroy trees. Incorporating tree friendly design criteria into construction and developing a reasonable tree ordinance are two effective tools to ensure sustainable greenspace.



### TOWN CENTER CONCEPT



### VISITOR'S CENTER CONCEPT



### TREE ASSESSMENT

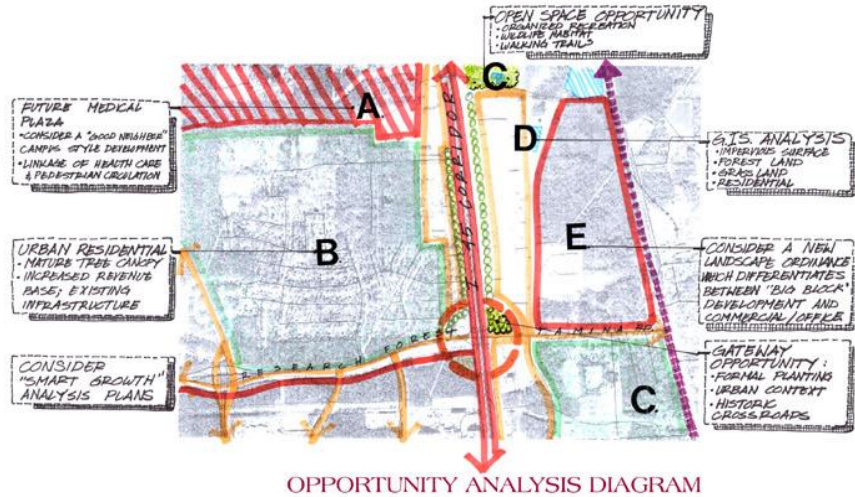


# Community Planning Process

## City of Shenandoah

The City of Shenandoah, like many smaller communities, is experiencing rapid growth because of its enhanced quality of life. It has in place a Tree and Landscape Ordinance that addresses the minimum requirements for commercial issue of both building and occupancy permits. The City, seeking to strengthen the ordinance, further preserve greenspace, and ensure the selection and installation of trees and landscape material enlisted the assistance of Burditt.

Burditt provided the research, strategy, and documentation to write a grant application for a Texas Forest Service Urban Forestry Partnership Grant. The ordinance is essential to the City's goals and vision as well as promoting proper landscape planning and urban forestry. The ordinance document as proposed will include a corresponding technical manual.



### SITE ANALYSIS



1999

Aerial photos show community and landuse changes from 1999 to 2002.



2002

### TREE PRESERVATION EFFORTS

- EVALUATE EXISTING ORDINANCE
- PROVIDE GUIDANCE IN REWRITING THE ORDINANCE
- SERVE AS CONSULTANTS TO THE CITY
- FIELD EVALUATE EXISTING COMMUNITY GREENSPACE
- CONDUCT INDIVIDUAL INTERVIEW WITH KEY REPRESENTATIVES
- CONDUCT STAKE HOLDERS MEETINGS
- DEVELOP TREE AND LANDSCAPE ORDINANCE ALONG WITH TECHNICAL SPECIFICATIONS MANUAL

### GIS ANALYSIS

Landuse classification analysis shows a dramatic increase in impervious surfaces.



1993 - Source: Burditt



2000 - Source: H-GAC

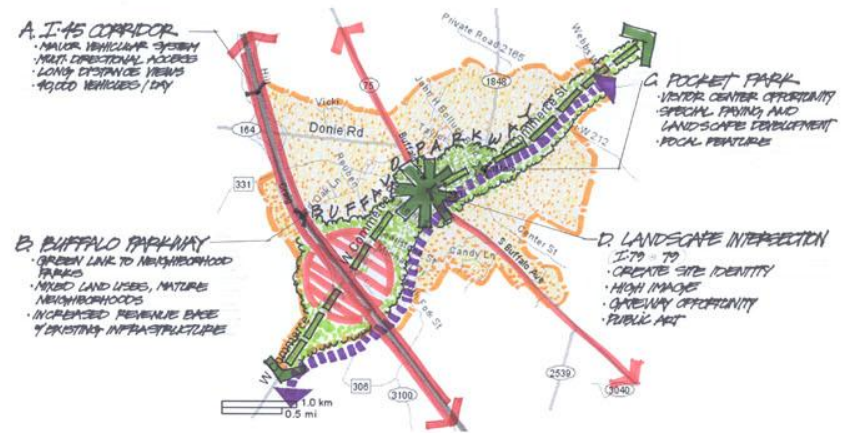
# Community Planning Process

## City of Buffalo

Centrally located between Houston and Dallas, Buffalo, Texas is known as the 'Crossroads of Texas'. Named after the Bison that roamed the open range and rolling hills of Leon County in the mid-1800's. The City of Buffalo wishes to capitalize on their unique location and the historical aspects of the community to further attract visitors including tourist, travelers, and new residences into the city.

Burditt's team will focus on gateway opportunities along the I-45 / Hwy. 79 corridor, streetscape design, and pocket park opportunities in the town center area.

Mass highway planting design themes will play a major role in the organization of the landscape master plan. Hardy Texas species such as Southern Magnolia, Chinese Pistache, River Birch, Crapemyrtle, Wax Myrtle, and Vitex are recommended.



OPPORTUNITY ANALYSIS DIAGRAM

### SITE ANALYSIS



### SCULPTURE OPPORTUNITIES



### GIS ANALYSIS





# Community Planning Process

## GIS Modeling





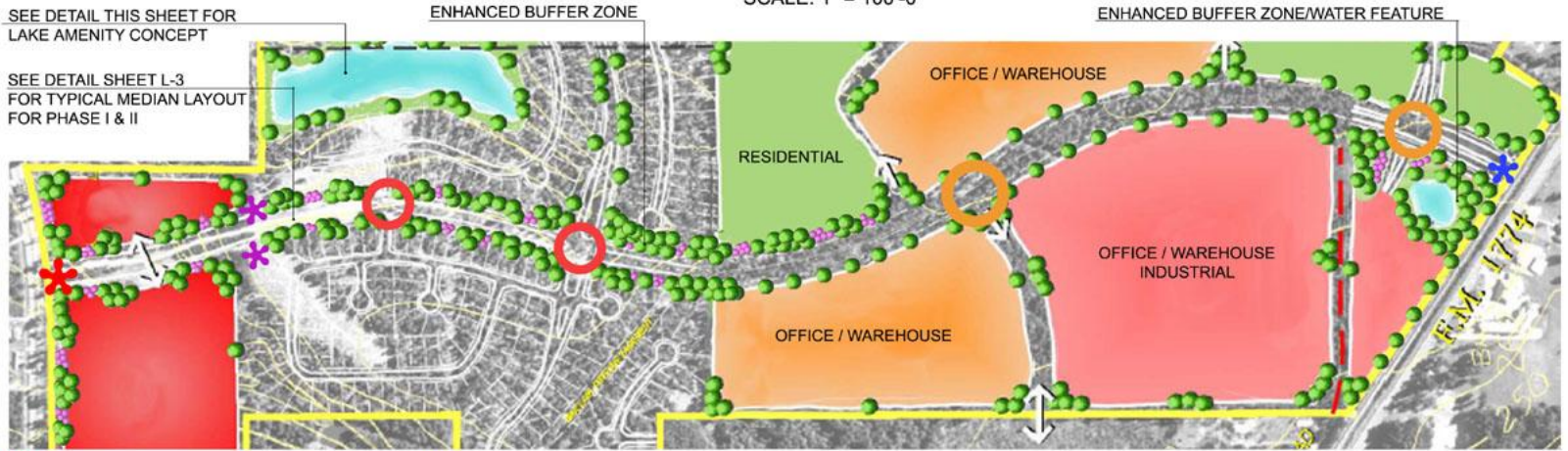
# Community Planning Process

## Magnolia Ridge: Magnolia, Texas



SEE DETAIL THIS SHEET FOR LAKE AMENITY CONCEPT

SEE DETAIL SHEET L-3 FOR TYPICAL MEDIAN LAYOUT FOR PHASE I & II



MAIN PROJECT SIGNAGE AT FM1488 (SEE SHEET L-4 FOR DETAIL)

SECONDARY PROJECT SIGNAGE (SEE SHEET L-5 FOR DETAIL)

PROJECT SIGNAGE AT FM 1774 (SEE SHEET L-6 FOR DETAIL)

SPECIAL PAVING WITH MEDALLIAN (SEE SHEET L-6 FOR DETAIL)

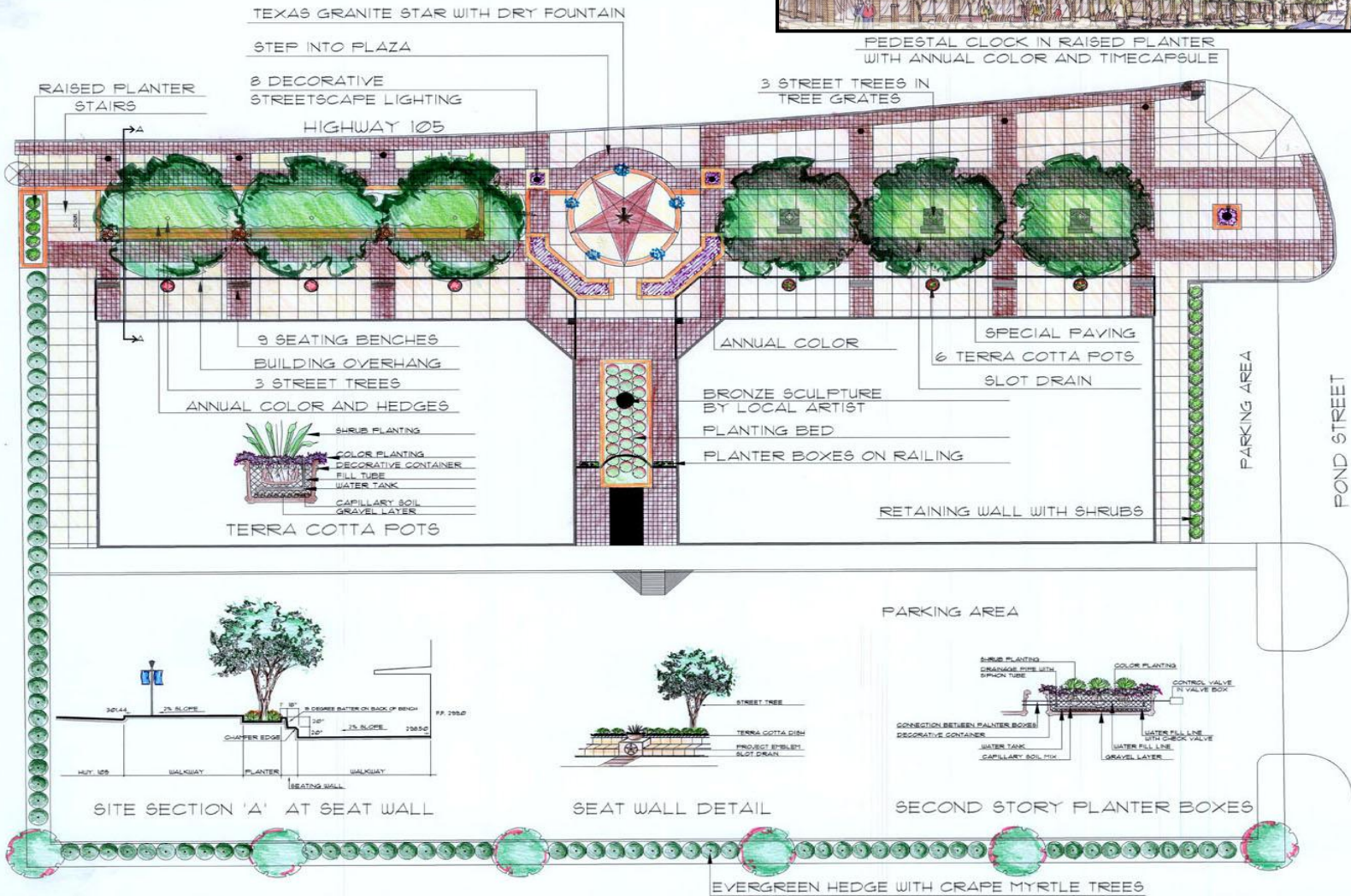
SPECIAL PAVING





# Community Planning Process

## Heritage Place: Montgomery, Texas





# Community Planning Process

## Conceptual Design – Neighborhood Entrance



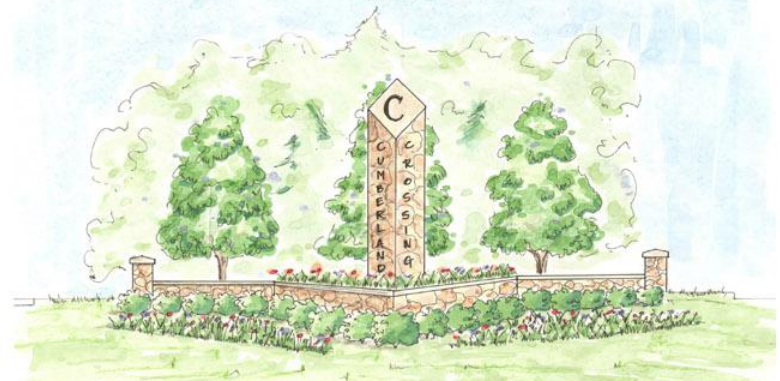
CONCEPTUAL ENTRANCE OPTION 'A'  
PLAN VIEW  
SCALE: NTS



CONCEPTUAL ENTRANCE OPTION 'B'  
PLAN VIEW  
SCALE: NTS



CONCEPTUAL ENTRANCE OPTION 'A'  
PERSPECTIVE



CONCEPTUAL ENTRANCE OPTION 'B'  
PERSPECTIVE



# Community Planning Process

## Construction Drawings: Cumberland Crossing

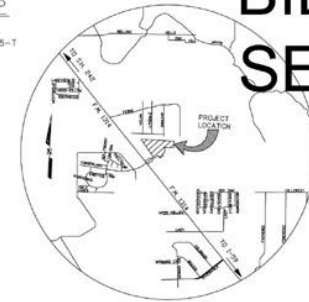
# CUMBERLAND CROSSING

DEVELOPMENT BY: FM 1314 JOINT VENTURE LIMITED

**BURDITT**  
LANDSCAPE ARCHITECTURE  
2040 West Loop 2306, Suite 318  
Coppell, Texas 75042  
T. 936-756-3041  
F. 936-539-3240



VICINITY MAP  
SCALE: NONE  
MONTGOMERY COUNTY  
KEY MAP PANEL NO. 255-T



# BID SET

4/12/05

### LIST OF INCLUDED DRAWINGS: SHEET #

- L-1 LANDSCAPE DEVELOPMENT PLAN
- L-2 LAYOUT & MATERIAL PLAN
- L-3 DRAINAGE & LIGHTING PLAN
- L-4 PLANTING PLAN
- L-5 DETAILS
- L-6 DETAILS
- L-7 PLANTING DETAILS
- L-8 IRRIGATION LAYOUT
- L-9 IRRIGATION DETAILS

CUMBERLAND  
CROSSING

#### GENERAL NOTES:

1. CONSTRUCTION SHY TO BE KEPT CLEAN AND MATERIALS ORDERLY THROUGHOUT THE CONSTRUCTION PROCESS.
2. THE CONTRACTOR IS RESPONSIBLE TO NOTIFY THE LOCATION OF BURIED UTILITIES BEFORE DIGGING. ANY DAMAGES CAUSED TO THE UTILITIES ARE TO BE REPAIRED AT NO COST TO THE OWNER.
3. THIS SET TO BE A MINIMUM OF 50% AS BIDDING.

#### GRADES AND ELEVATION:

1. FINISH GRADING TO BE MIN. 4" OF FILL BEFORE RESPONSIBILITY IS TRANSFERRED TO PLANTING CONTRACTOR.
2. EXPOSED SOIL FROM EXCAVATION, IF NOT NEEDED FOR ROUGH GRADING IS THE RESPONSIBILITY OF THE EXCAVATING CONTRACTOR FOR OFFSITE DISPOSAL.

#### PLANTING:

1. FINAL GRADING TO BE APPROVED BY LANDSCAPE ARCHITECT IN THE FIELD BEFORE PLANTING LAYOUT.
2. CONTRACTOR IS RESPONSIBLE FOR VERIFYING LOCATION OF BURIED UTILITIES BEFORE DIGGING.
3. ALL PLANT MATERIALS TO BE APPROVED AS QUALITY GRADE BEFORE PLANTING BY LANDSCAPE ARCHITECT.
4. PLANTING CONTRACTOR TO BE RESPONSIBLE FOR FINE GRADING AND ANY FINAL MISCELLANEOUS DEMOS DISPOSAL.
5. FRESH GRADE OF SOIL TO BE 18" (12" BELOW FINISH GRADE) OF FRESHNESS.
6. ALL PLANTS TO BE OBTAINED FROM CONTRACTOR WITHIN 4 (FOUR) MILE RADIUS.
7. SOIL PREPARATION SHALL BE AS FOLLOWS: PLANTING BEDS TO RECEIVE A MINIMUM OF 1 1/2 BUCKETS OF MULLIN.
8. TREES AND SHRUBS TO BE PRUNED IN ACCORDANCE WITH THE AMERICAN ASSOCIATION OF HORTICULTURE STANDARDS OR AS DIRECTED BY OWNER'S REPRESENTATIVE.
9. FERTILIZER TO BE APPLIED TO PLANTS AND TREES COLOR YEAR FOR SEASON'S GROWTH OR APPROVED EQUIVALENTS.
10. LANDSCAPE CONTRACTOR TO MAKE PROVISION FOR ALL PLANTS 1 GAL. OR LARGER TO SURVIVE UNDER WEATHERY OF REPLACEMENT FOR 12 MONTHS.
11. SOIL PLANTING AREAS TO BE TOP DRESSED WITH SAND (ONE INCH MAXIMUM) AND REFINISHED BEFORE SOIL LAYS.
12. SOIL PREPARATION FOR PLANTING BEDS WITH 4" FRESH CULTIVATE SOIL TO A DEPTH OF 4" MINIMUM AND MOUND APPROVED INDUSTRY STANDARD ORGANIC PLANTING MIX TO A DEPTH OF 4" ABOVE FINISH GRADE.
13. MULTILEVEL AREA SOIL PREPARATION: CULTIVATE NATIVE SOIL TO A DEPTH OF 2" MINIMUM AND TOP WITH 2" OF APPROVED INDUSTRY STANDARD ORGANIC PLANTING MIX.

#### LIGHTING:

1. LIGHTING CONTRACTOR TO INCLUDE SUPPLIES LINES TO EXPOSED FIXTURES & ANY NECESSARY SAFETY FEATURES TO COMPLY WITH BUILDING ORDINANCES AND WEATHER STANDARDS.
2. INCLUDING ALL MATERIALS TO COMPLY WITH BUILDING ORDINANCES AND WEATHER STANDARDS TO BE PROVIDED BY STATE CONTRACTOR IN AREA OF FINISHING. FLOOR GRADE TO BE REFERRED TO SPECIFIED ELEVATION.
3. LIGHTING FIXTURES TO BE APPROVED BY LANDSCAPE ARCHITECT.

#### EXTERIOR WALLS:

#### SOILS:

ENSURE FOOTING DRAINAGE AWAY FROM FOUNDATION ON ALL SITES

#### CONSTRUCTION:

1. REMOVE ALL SOFT PORTIONS OF SOIL UNDER FOUNDATION. REPLACE WITH SELECT LOW IN FILL AND COMPACT TO SPECIFICATIONS.
2. REPAIRS FOUNDATION AS SHOWN.

#### CAST IN PLACE CONCRETE:

ALL CONCRETE WORK SHALL CONFORM TO ALL REQUIREMENTS OF AMERICAN CONCRETE INSTITUTE AC 308 AND APPLICABLE SECTIONS OF ACI 308 (LATEST EDITION) FOR READY MIXED CONCRETE.

#### MATERIALS:

1. ALL CONCRETE SHALL BE "THIRST MIXED" CONCRETE, OR USE AIR ENTRAINMENT AND SHALL ATTAIN A MINIMUM COMPRESSIVE STRENGTH OF 3000 PSI IN 28 DAY CURE.
2. ALL CONCRETE SHALL BE PLACED IN 24 HOURS OF ORDERING. REPAIRS SHALL CONFORM TO ACI 308 AND (LATEST EDITION) ACI 308. REPAIRS MATERIALS SHALL BE INTEGRATED AND FREE FROM CRACKING. RUST WILL BE PROHIBITED ON ALL STEEL REINFORCING.
3. ALL REINFORCING SHALL BE AS SHOWN.

#### WALLS (STRUCTURAL ONLY):

1. ALL WALLS SHALL HAVE AN ULTIMATE COMPRESSIVE STRENGTH OF 3000 PSI.
2. WALLS SHALL BE REINFORCED WITH #4 BARS AT 18" ON CENTER.
3. WALLS SHALL BE FINISHED WITH #4 BARS AT 18" ON CENTER.
4. REINFORCING SHALL BE UNCOATED.

#### INSTALLATION:

1. REINFORCING SHALL BE ACCURATELY POSITIONED, BENT, AND REINFORCED WITH METAL CHAIRS, SPACERS, OR METAL HANGERS.
2. REINFORCING BARS SHALL CONFORM TO THE REQUIREMENTS OF ACI 308 (LATEST EDITION).

#### WEATHER REQUIREMENTS:

1. NO READY PLACING OF CONCRETE SHALL BE IN PLACE WHEN THE AIR TEMPERATURE IS GREATER THAN 90 DEGREES F. UNLESS SPECIAL PROCEDURES FOR COOLING, RETARDING, AND PROTECTING IN PLACE CONCRETE.
2. IF PLACING IN PLACE WHEN THE AIR TEMPERATURE IS GREATER THAN 90 DEGREES F. UNLESS SPECIAL PROCEDURES FOR COOLING, RETARDING, AND PROTECTING IN PLACE CONCRETE.
3. COLD WEATHER PLACING - DO NOT MIX OR PLACE WITH AMBIENT TEMPERATURE WILL FALL BELOW 40 DEGREES F. OR WHEN CONDITIONS INDICATE TEMPERATURE WILL FALL BELOW 40 DEGREES F. WITHIN 72 HOURS. CONCRETE EXPOSED SHALL HAVE A TEMPERATURE NOT LESS THAN 40 DEGREES F. REINFORCING SHALL BE COVERED WITH AN INSULATED THERMAL PROTECTIVE COVER. PLACING CONCRETE IN FORM WORK AT A TEMPERATURE NOT LESS THAN 40 DEGREES F. FOR NOT LESS THAN 10 HOURS AFTER POURING. COMPLY WITH ACI 308 (LATEST EDITION) FOR COLD WEATHER PROTECTION.



# Community Planning Process

## Construction Drawings: Cumberland Crossing

**GENERAL NOTES:**

- IRRIGATION AND SLEEVES TO BE PROVIDED UNDER THE DIRECTION OF OWNER OR OWNER'S REPRESENTATIVE.
- FINAL GRADE TO BE APPROVED BY OWNER OR OWNER'S REPRESENTATIVE.

EXISTING IRRIGATION SLEEVE

- 3 MOSS ROCK BOULDERS  
1'-7" DIA. TO BE SELECTED BY LANDSCAPE ARCHITECT
- 1 SHUMARD RED OAK  
48 GAL.
- S5 VARIEGATED LIRIOPE  
1 GAL.
- 3 PURPLE FOUNTAIN GRASS  
9 GAL.
- ST. AUGUSTINE SOD LAWN  
48 SQ. FT.
- 6 HAMELN GRASS  
9 GAL.

**KEY PLAN**  
SCALE: 1" = 200' - 0"

**ENTRY MONUMENT WALL AREA**  
CONCEPT ELEVATION ENTRY MONUMENT  
SCALE: 1/16" = 1' - 0"

**TYPICAL CUL-DE-SAC LANDSCAPED MEDIAN**  
SCALE: 1/8" = 1' - 0"

BID SET

THE ARCHITECT: BURDITT & ASSOCIATES, INC.  
1605 W. UNIVERSITY BLVD., SUITE 200, AUSTIN, TEXAS 78705  
ON MARCH 1 ST, 2005.

Developer: of Documents  
THIS DOCUMENT AND THE PLANS AND SPECIFICATIONS HERETOBY  
SHALL BE AN INSTRUMENT OF SERVICE AND NOT A CONTRACT. THE  
RESPONSIBILITY OF DESIGN AND CONSTRUCTION SHALL  
BE SOLELY OF THE CONTRACTOR AND NOT THE ARCHITECT.  
REPRODUCTION OF ANY PART IS PROHIBITED WITHOUT THE WRITTEN  
AUTHORIZATION OF BURDITT.

BURDITT

2200 W. LOOP ANS. SUITE 370  
CORRAL COOKS, TEXAS 75042  
WWW.BURDITT.COM

CUMBERLAND  
CROSSING

DEVELOPMENT BY: FM 1314 JOINT VENTURE LIMITED

ISSUE		
NO.	DATE	DESCRIPTION

REVISIONS

SHEET TITLE

LANDSCAPE DEVELOPMENT PLAN

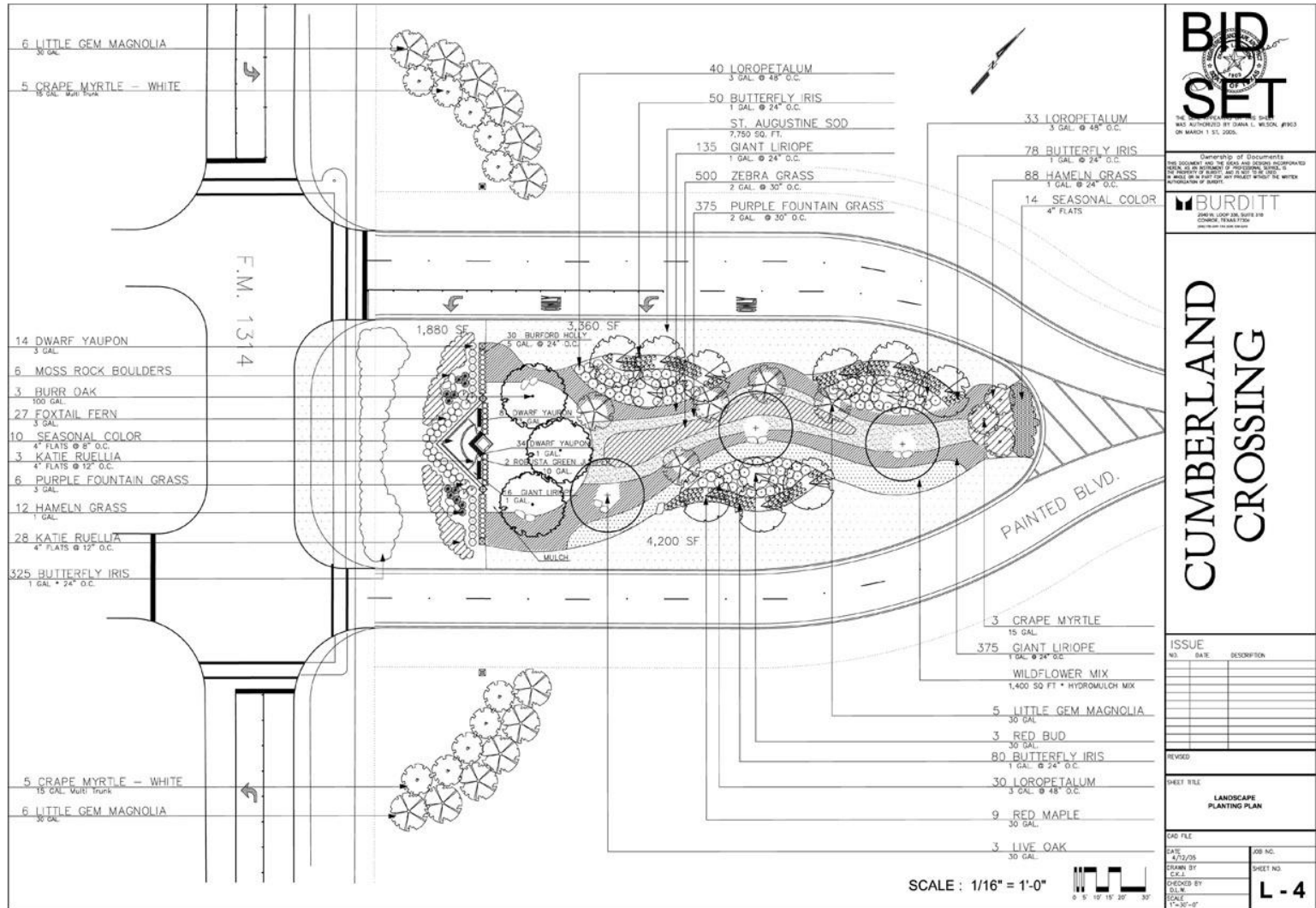
CAD FILE	ASB NO.
DATE	DRAWN BY
SCALE	SHEET NO.
CHECKED BY	SCALE
SCALE	AS SHOWN

L - 1



# Community Planning Process

## Construction Drawings: Cumberland Crossing



Ownership of Documents  
 THIS DOCUMENT AND THE DRAWINGS HERETOIN DESCRIBED ARE THE PROPERTY OF BURDITT AND SHALL REMAIN THE PROPERTY OF BURDITT. NO PART OF THIS DOCUMENT OR THE DRAWINGS HERETOIN DESCRIBED SHALL BE REPRODUCED OR TRANSMITTED IN ANY FORM OR BY ANY MEANS, ELECTRONIC OR MECHANICAL, INCLUDING PHOTOCOPYING, RECORDING, OR BY ANY INFORMATION STORAGE AND RETRIEVAL SYSTEM, WITHOUT THE WRITTEN PERMISSION OF BURDITT.

**BURDITT**  
 20000 LOOP 200, SUITE 200  
 CUMBERLAND, TEXAS 75814  
 409.666.1000

# CUMBERLAND CROSSING

ISSUE		
NO.	DATE	DESCRIPTION

REVISED

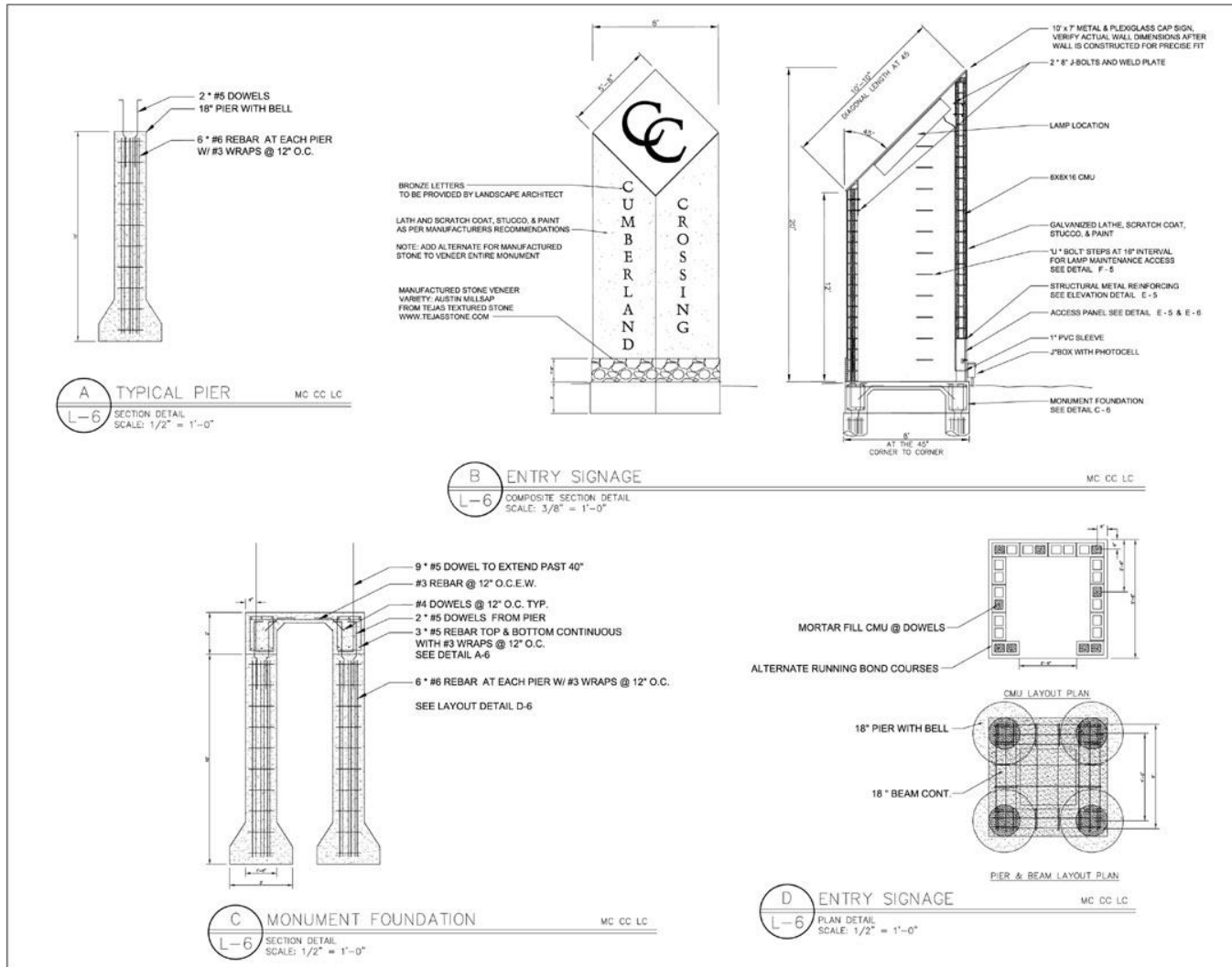
SHEET TITLE  
**LANDSCAPE PLANTING PLAN**

JOB NO.	
SHEET NO.	
<b>L - 4</b>	



# Community Planning Process

## Construction Drawings: Cumberland Crossing



Ownership of Documents  
 THIS DOCUMENT AND THE DRAWINGS AND SPECIFICATIONS HEREOF ARE THE PROPERTY OF BURDITT & ASSOCIATES, INC. NO PART OF THIS DOCUMENT IS TO BE REPRODUCED OR TRANSMITTED IN ANY FORM OR BY ANY MEANS, ELECTRONIC OR MECHANICAL, INCLUDING PHOTOCOPYING, RECORDING, OR BY ANY INFORMATION STORAGE AND RETRIEVAL SYSTEM, WITHOUT THE WRITTEN PERMISSION OF BURDITT & ASSOCIATES, INC.



2008 W. LOOP S.W. SUITE 910  
 COMMERCE, TEXAS 75822  
 (940) 356-2200  
 WWW.BURDITT.COM

**CUMBERLAND CROSSING**

ISSUE		
NO.	DATE	DESCRIPTION

REVISED

SHEET TITLE  
**LANDSCAPE DETAILS**

CDS FILE	
DATE: 4/7/08	APP NO.:
DRAWN BY: E.C.L.	SHEET NO.:
CHECKED BY: D.L.M.	SCALE: 1"=3'-0"

L-6



# Community Planning Process

## Construction Drawings: Cumberland Crossing

**A MULTI-STEM TREE**  
L-7 SCALE: N.T.S.

**B 3" CALIPER TREE AND LARGER**  
L-7 SCALE: N.T.S.

**C TRENCHED EDGE DETAIL**  
L-7 SCALE: N.T.S.

**D SHRUB PLANTING DETAIL**  
L-7 SCALE: N.T.S.

**E LAWN AT CURB**  
L-7 SCALE: N.T.S.

**F GROUNDCOVER AND SHRUB PLANTING**  
L-7 SCALE: N.T.S.

**G TREE 2" CALIPER AND LESS**  
L-7 SCALE: N.T.S.

**DETAIL NOTES:**

1. PLANT TREE WITH 1.5"-2" OF ROOTBALL ABOVE FINISHED GRADE.
2. SET STAKES WITHIN MULCH BED OF TREE.
3. PLACE STAKES AT EQUAL DISTANCES AROUND TREE.
4. PLACE MULCH AND WATER TREE THOROUGHLY AFTER PLANTING.
5. PLACE ALL CUT WIRES WITH SURVEYOR'S TAPE.
6. PLANTING PIT SHALL BE A MINIMUM OF TWICE THE DIAMETER OF THE ROOTBALL.
7. IF EXISTING NATIVE TOPSOIL IS NOT AVAILABLE USE APPROVED TOPSOIL.
8. REMOVE STAKES AFTER ONE YEAR.

**DETAIL NOTES:**

1. PLANT TREE WITH 1.5"-2" OF ROOTBALL ABOVE FINISHED GRADE.
2. SET STAKES WITHIN MULCH BED OF TREE.
3. PLACE STAKES AT EQUAL DISTANCES AROUND TREE.
4. PLACE MULCH AND WATER TREE THOROUGHLY AFTER PLANTING.
5. FLAG ALL CUT WIRES WITH SURVEYOR'S TAPE.
6. PLANTING PIT SHALL BE A MINIMUM OF TWICE THE DIAMETER OF THE ROOTBALL.
7. IF EXISTING NATIVE TOPSOIL IS NOT AVAILABLE USE APPROVED TOPSOIL.
8. REMOVE STAKES AFTER ONE YEAR.

**DETAIL NOTE:** TRENCHING SHALL BE USED TO REPERATE LAWN AREAS FROM MULCHED SHRUB BEDS.

**DETAIL NOTES:**

1. PLANT TREE WITH 1.5"-2" OF ROOTBALL ABOVE FINISHED GRADE.
2. SET STAKES WITHIN MULCH BED OF TREE.
3. PLACE STAKES AT EQUAL DISTANCES AROUND TREE.
4. PLACE MULCH AND WATER TREE THOROUGHLY AFTER PLANTING.
5. FLAG ALL CUT WIRES WITH SURVEYOR'S TAPE.
6. PLANTING PIT SHALL BE A MINIMUM OF TWICE THE DIAMETER OF THE ROOTBALL.
7. IF EXISTING NATIVE TOPSOIL IS NOT AVAILABLE USE APPROVED TOPSOIL.
8. REMOVE STAKES AFTER ONE YEAR.

**DETAIL NOTE:** GRASS SHALL BE INSTALLED FLUSH WITH TOP OF ADJACENT CURB OR SIDEWALK.

**DETAIL NOTES:**

1. PLANT TREE WITH 1.5"-2" OF ROOTBALL ABOVE FINISHED GRADE.
2. SET STAKES WITHIN MULCH BED OF TREE.
3. PLACE STAKES AT EQUAL DISTANCES AROUND TREE.
4. PLACE MULCH AND WATER TREE THOROUGHLY AFTER PLANTING.
5. FLAG ALL CUT WIRES WITH SURVEYOR'S TAPE.
6. PLANTING PIT SHALL BE A MINIMUM OF TWICE THE DIAMETER OF THE ROOTBALL.
7. IF EXISTING NATIVE TOPSOIL IS NOT AVAILABLE USE APPROVED TOPSOIL.
8. REMOVE STAKES AFTER ONE YEAR.

**DETAIL NOTES:**

1. PLANT TREE WITH 1.5"-2" OF ROOTBALL ABOVE FINISHED GRADE.
2. SET STAKES WITHIN MULCH BED OF TREE.
3. PLACE STAKES AT EQUAL DISTANCES AROUND TREE.
4. PLACE MULCH AND WATER TREE THOROUGHLY AFTER PLANTING.
5. FLAG ALL CUT WIRES WITH SURVEYOR'S TAPE.
6. PLANTING PIT SHALL BE A MINIMUM OF TWICE THE DIAMETER OF THE ROOTBALL.
7. IF EXISTING NATIVE TOPSOIL IS NOT AVAILABLE USE APPROVED TOPSOIL.
8. REMOVE STAKES AFTER ONE YEAR.



THESE DOCUMENTS ARE THE PROPERTY OF BURDITT AND SHOULD NOT BE REPRODUCED OR TRANSMITTED IN ANY FORM OR BY ANY MEANS, ELECTRONIC OR MECHANICAL, INCLUDING PHOTOCOPYING, RECORDING, OR BY ANY INFORMATION STORAGE AND RETRIEVAL SYSTEM.

**BURDITT**  
2500 N. LOOP EAST, SUITE 370  
DALLAS, TEXAS 75246  
WWW.BURDITT.COM

# CUMBERLAND CROSSING

**ISSUE**

NO.	DATE	DESCRIPTION

**REVISIONS**

NO.	DATE	DESCRIPTION

**SHEET TITLE**

**PLANTING DETAILS**

CAD FILE	ASB NO.
SA 4/27/05	
DRAWN BY	SHEET NO.
LSCL	
CHECKED BY	SCALE
SLW	1"=30'-0"