



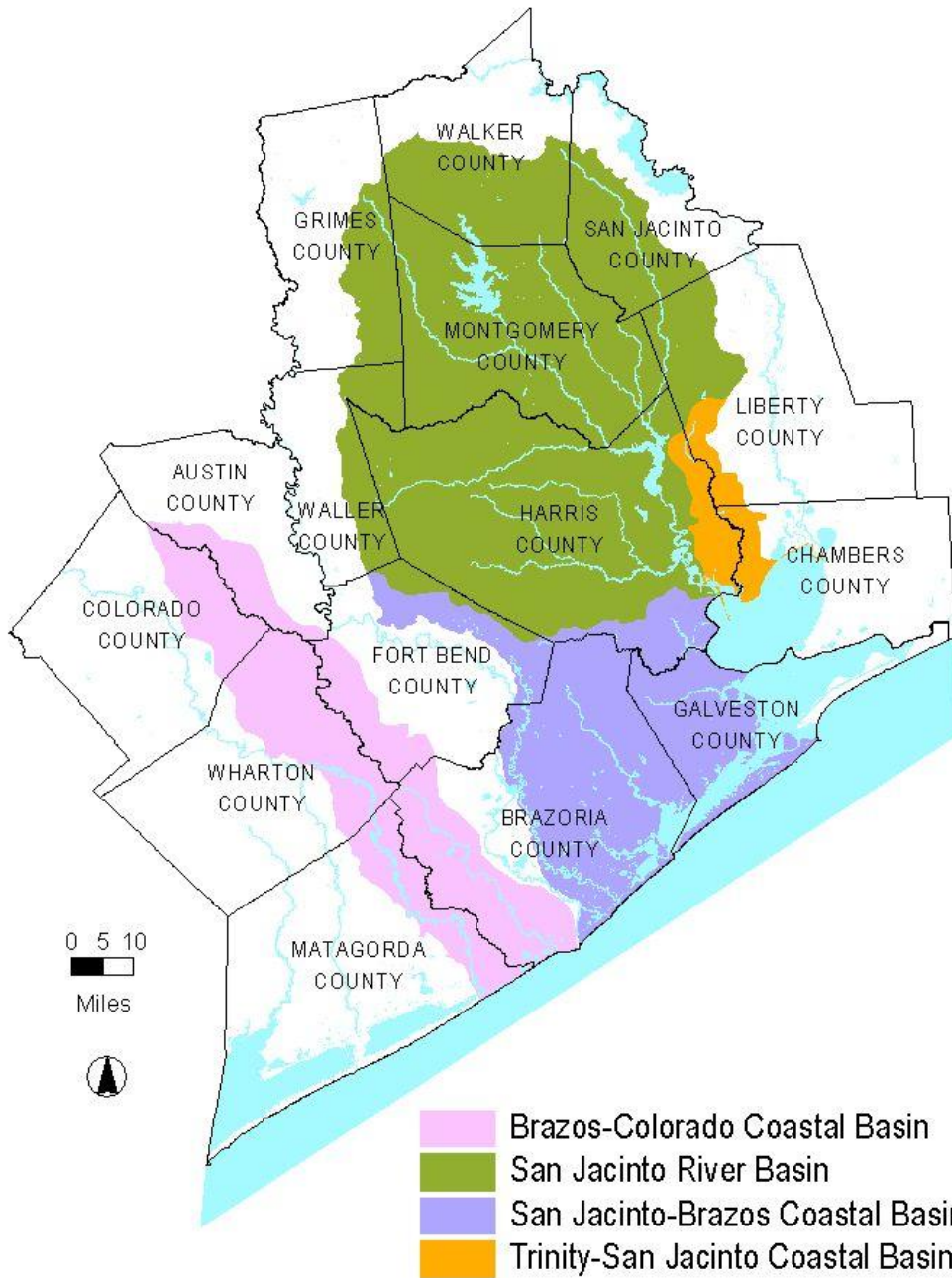
H-GAC's Coordinated Monitoring Program

Jean Wright

Clean Rivers Program

Quality Assurance Officer & Monitoring Coordinator

H-GAC Assessment Areas

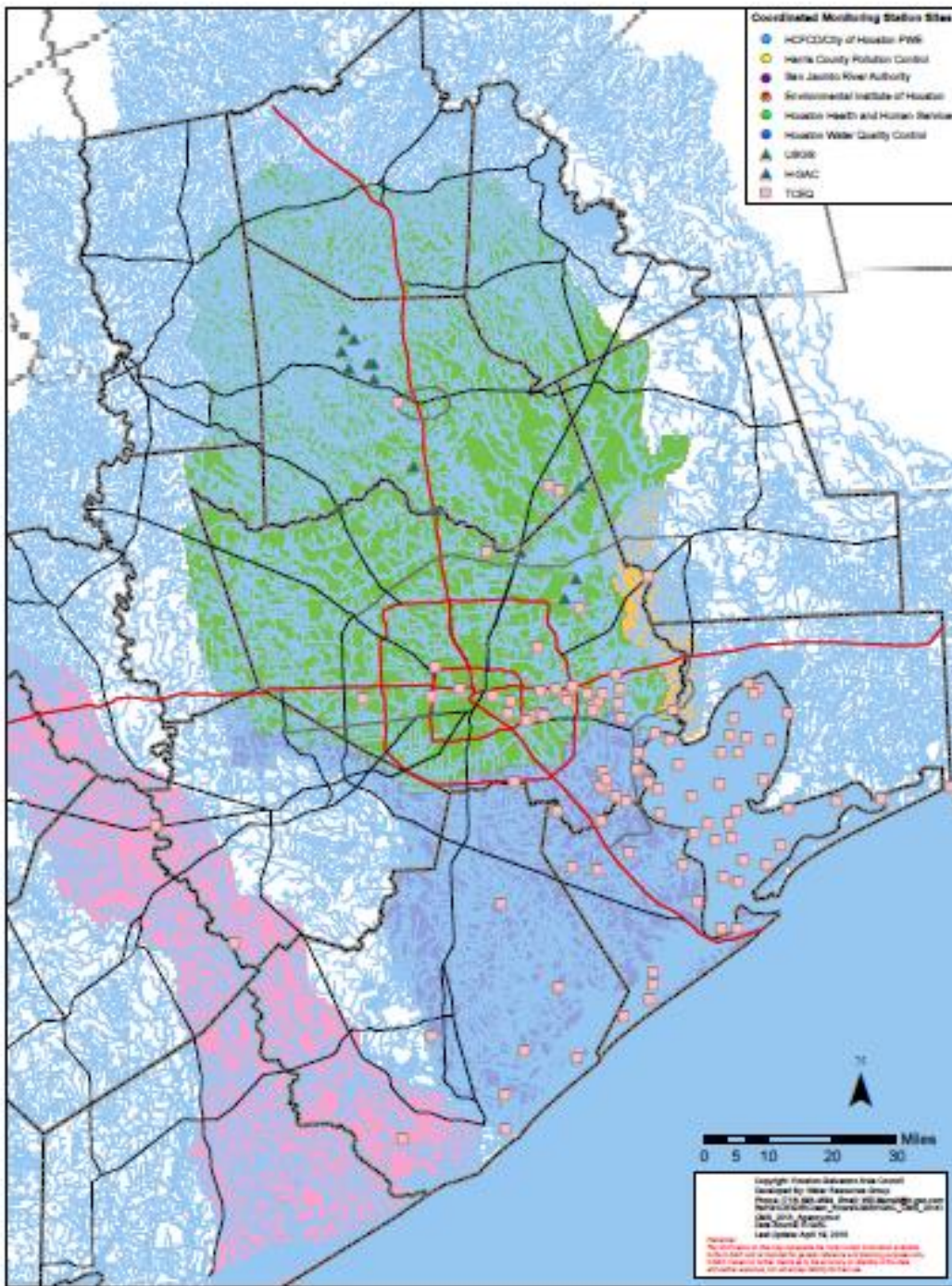


- 4 Basins
- 15 Counties



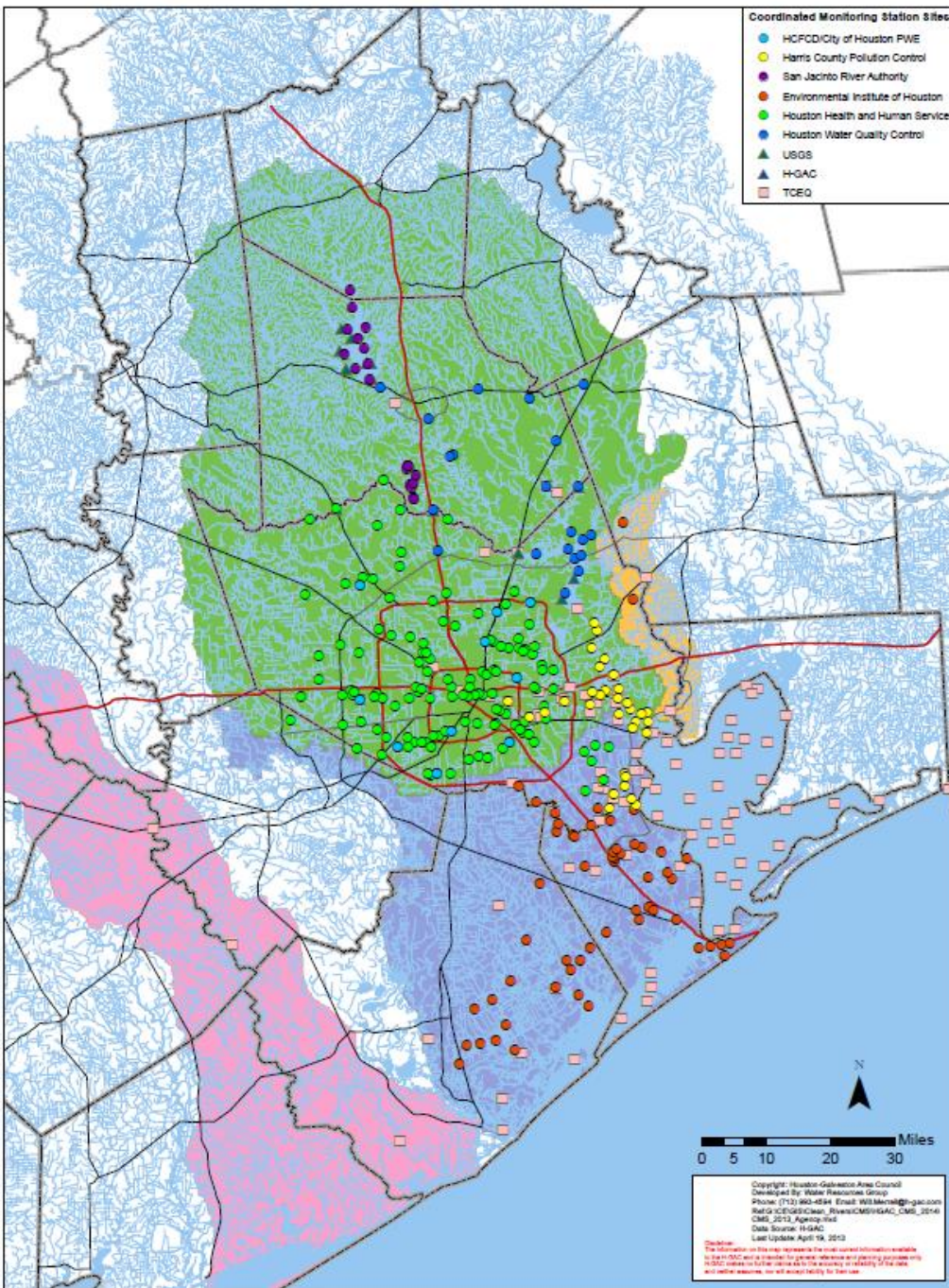
Coordinated Monitoring Meeting

- Annual event
- Day long
- Agency representation
 - TCEQ, GBEP, TSSWCB, TWDB, TP&WD, plus
- Local partner participation
- Watershed Action Planning

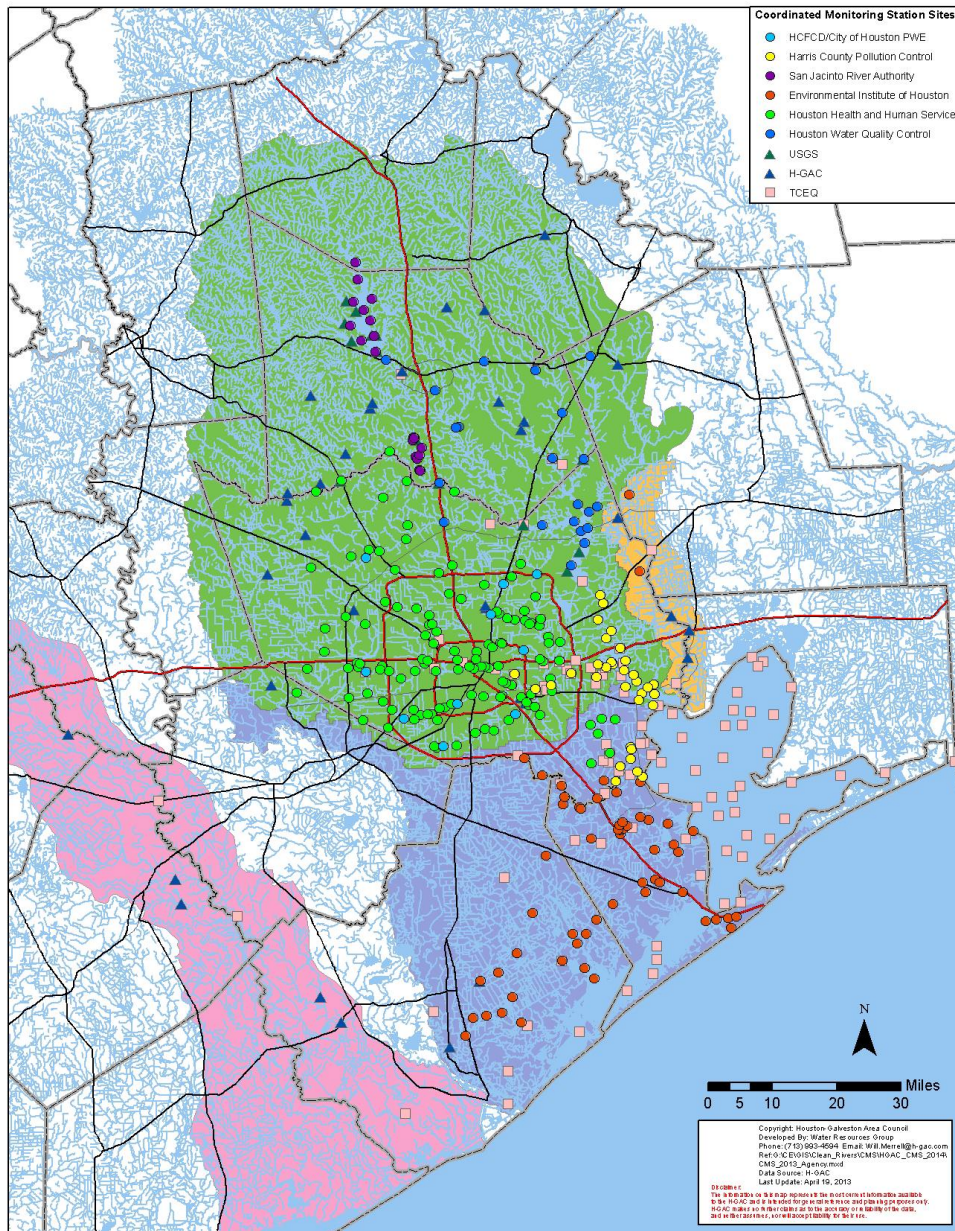


TCEQ and USGS
 monitoring sites
 only

TCEQ, USGS, and Local partners monitoring sites



H-GAC's FY2013 Coordinated Monitoring Stations



Professional Monitoring

- 8 local partners
+ TCEQ
+ USGS
- Over 370 Sites
- Monitored at least quarterly
- All data collected under an approved QAPP

Stream Team Monitoring

- 85 Volunteers
- 52 Sites



Number of Sites per Partner

- Health & Human Services – 133 x 9 mo/yr
- Water Quality Control – 21 monthly / bimonthly
- SJRA Lake Conroe – 10 monthly
- SJRA Woodlands – 9 field monthly, lab quarterly
- Harris County – 33 monthly/bimonthly
- Environmental Institute – 55 quarterly
- H-GAC – 33 quarterly



Anticipated Changes from FY2013 to FY2014

- Continue 24-hour DO monitoring –
4 different segments
- Moved several sites due to changes in
accessibility/safety/end of project
- H-GAC adding monitoring sites on Caney
Creek & Linville Bayou, Matagorda County

List of Parameters

Field

- Temperature
- Specific Conductance
- pH
- Dissolved Oxygen
- Transparency
- Flow Severity
- Days Since Last Precipitation
- Instantaneous Flow
- Plus several qualitative parameters

Laboratory

- Ammonia
- Nitrate + Nitrite
- Nitrate
- TKN
- Total Phosphorus
- Chlorophyll *a*
- TSS
- Sulfate
- Chloride
- Escherichia coli (*E. coli*)
- Enterococcus Bacteria



To Access Coordinated Monitoring Schedules

Directly:

<http://cms.lcra.org/>

H-GAC's web site:

http://www.h-gac.com/community/water/rivers/data/coordinated_monitoring_schedule.aspx

Through TCEQ's web site:

<http://www.tceq.state.tx.us/compliance/monitoring/crp/data/crp-resources.html>

Coordinated Monitoring Schedule

Clean Rivers Program partners and Texas Commission on Environmental Quality routinely monitor the water quality of rivers, lakes, bays and the Gulf of Mexico to determine if state standards are met. This site displays an interactive database that contains more than 1,800 sites monitored in Texas. Select a basin on the map to begin.

[Click here to view all sites.](#)

Choose Schedule FY:
 (Fiscal Year is September 1-August 31)

2014



Basin 1 - Canadian River
 Basin 2 - Red River
 Basin 3 - Sulphur River
 Basin 4 - Cypress Creek
 Basin 5 - Sabine River
 Basin 6 - Neches River

Basin 14 - Colorado River
 Basin 15 - Colorado-Lavaca Coastal
 Basin 16 - Lavaca River
 Basin 17 - Lavaca-Guadalupe Coastal
 Basin 18 - Guadalupe River
 Basin 19 - San Antonio River

TCEQ Region 1
 TCEQ Region 2
 TCEQ Region 3
 TCEQ Region 4
 TCEQ Region 5
 TCEQ Region 6

TCEQ Region 9
 TCEQ Region 10
 TCEQ Region 11
 TCEQ Region 12
 TCEQ Region 13
 TCEQ Region 14

Description (key word) Station Region 12 Segment 901 902 Submitting Entity HG TR WC Collecting Entity FO HG LL Monitoring Type BS RT

Site Description	Station ID	Waterbody ID	Region	SE	CE	MT	24 hr DO	AqHab	Benthics	Nekton	Metal Water	Organic Water	Metal Sed	Organic Sed	Conv	Amb Tox Water	Amb Tox Sed	Bacteria	Flow	Fish Tissue	Field	Comments
Segment 901 Cedar Bayou Tidal Map																						
CEDAR BAYOU TIDAL AT ROSELAND PARK NEAR WEST BANK 245 M UPSTREAM OF SPUR 55 Map	11111	0901	12	WC	FO	RT									4			4			4	
CEDAR BAYOU TIDAL MID CHANNEL 45 M DOWNSTREAM OF SH 148 NORTHEAST OF BAYTOWN Map	11115	0901	12	HG	HG	RT									4			4			4	Site was added to HG monitoring schedule in Fall 2011
CEDAR BAYOU TIDAL AT IH 10 EASTBOUND BRIDGE SOUTH OF MONT BELVIEU EAST SIDE OF BAYOU Map	11117	0901	12	HG	HG	BS	4															Second year of 2-year effort to collect 24-hr DO.
CEDAR BAYOU TIDAL AT IH 10 EASTBOUND BRIDGE SOUTH OF MONT BELVIEU EAST SIDE OF BAYOU Map	11117	0901	12	HG	HG	RT									4			4			4	
Segment 902 Cedar Bayou Above Tidal Map																						
CEDAR BAYOU ABOVE TIDAL 30 M DOWNSTREAM OF FM 1942 AT EAST BANK Map	11118	0902	12	HG	HG	RT									4			4	4		4	Site was added to HG monitoring schedule in Fall 2011
CEDAR BAYOU ABOVE TIDAL 20 M DOWNSTREAM OF US 90 NORTHEAST OF CROSBY Map	11120	0902	12	TR	LL	RT									4						4	Trinity Bay Study
CEDAR BAYOU ABOVE TIDAL 20 M DOWNSTREAM OF US 90 NORTHEAST OF CROSBY Map	11120	0902	12	WC	FO	RT									4			4	4		4	
CEDAR BAYOU ABOVE TIDAL 45 M DOWNSTREAM OF FM 1980 NORTHEAST OF HUFFMAN Map	11123	0902	12	HG	HG	BS	4												4			Added in 2012 for 2 years only
CEDAR BAYOU ABOVE TIDAL 45 M DOWNSTREAM OF FM 1980 NORTHEAST OF HUFFMAN Map	11123	0902	12	HG	HG	RT									4			4	4		4	

9 record(s)

River Basin: 9
FY: 2014

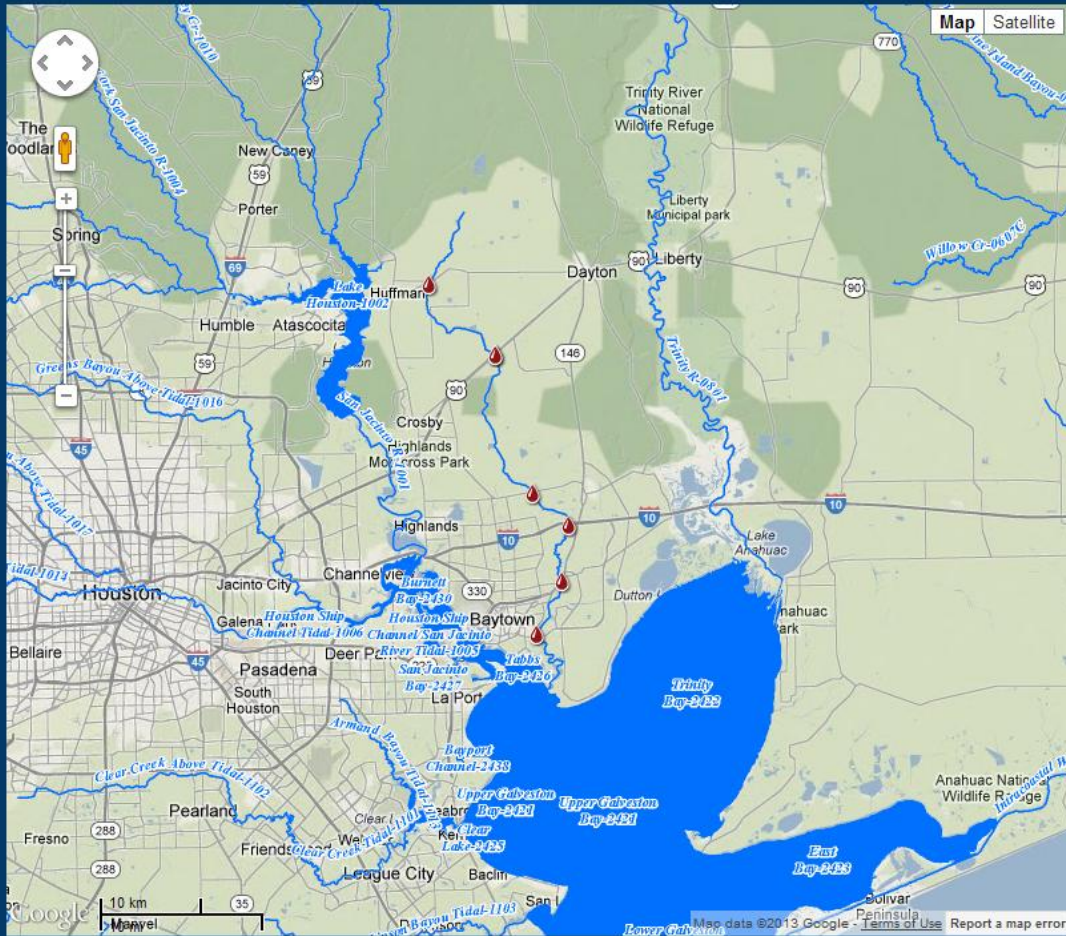
Login

Description (key word) Station Region 12 Segment 901 902 Submitting Entity HG TR WC Collecting Entity FO HG LL Monitoring Type BS RT

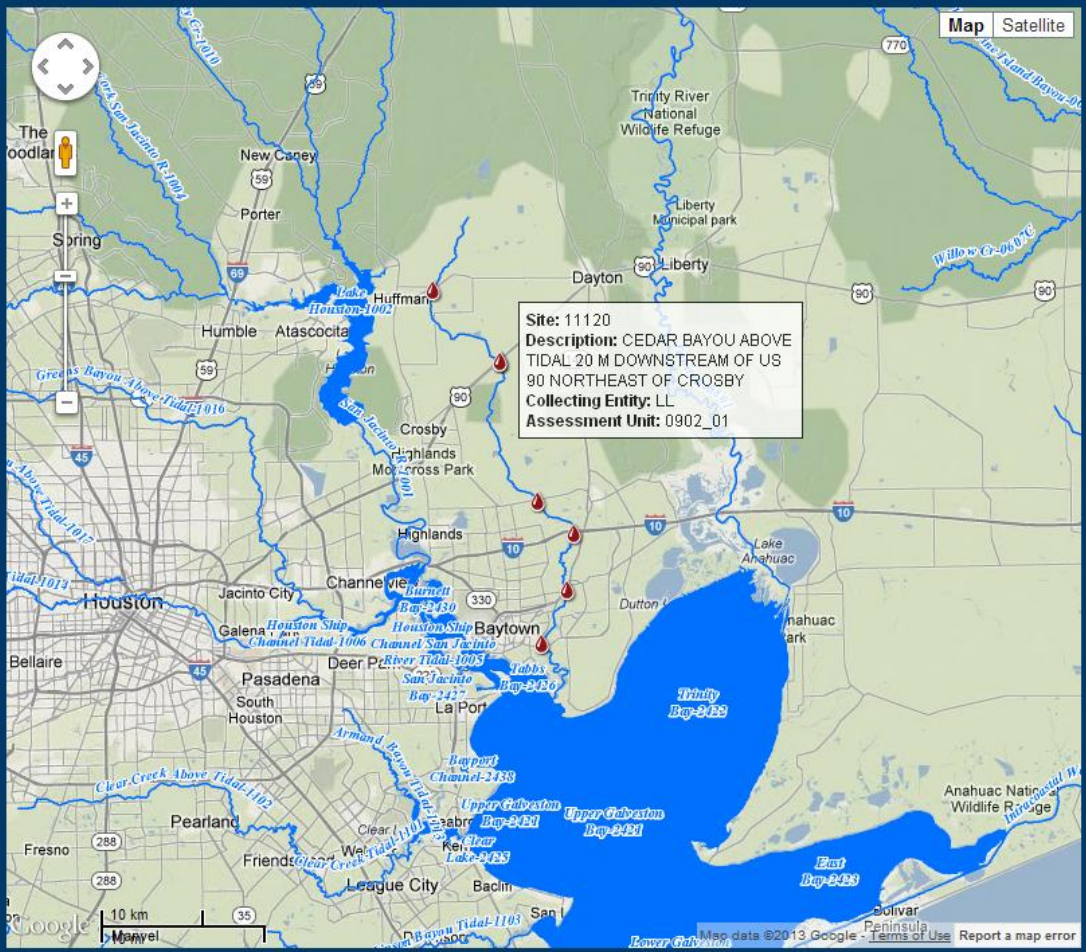
Site Description	Station ID	Waterbody ID	Region	SE	CE	MT	24 hr DO	AqHab	Benthics	Nekton	Metal Water	Organic Water	Metal Sed	Organic Sed	Conv	Amb Tox Water	Amb Tox Sed	Bacteria	Flow	Fish Tissue	Field	Comments
Segment 901 Cedar Bayou Tidal Map																						
CEDAR BAYOU TIDAL AT ROSELAND PARK NEAR WEST BANK 245 M UPSTREAM OF SPUR 55 Map	11111	0901	12	WC	FO	RT									4			4		4		
CEDAR BAYOU TIDAL MID CHANNEL 45 M DOWNSTREAM OF SH 148 NORTHEAST OF BAYTOWN Map	11115	0901	12	HG	HG	RT									4			4		4		Site was added to HG monitoring schedule in Fall 2011
CEDAR BAYOU TIDAL AT IH 10 EASTBOUND BRIDGE SOUTH OF MONT BELVIEU EAST SIDE OF BAYOU Map	11117	0901	12	HG	HG	BS	4															Second year of 2-year effort to collect 24-hr DO.
CEDAR BAYOU TIDAL AT IH 10 EASTBOUND BRIDGE SOUTH OF MONT BELVIEU EAST SIDE OF BAYOU Map	11117	0901	12	HG	HG	RT									4			4		4		
Segment 902 Cedar Bayou Above Tidal Map																						
CEDAR BAYOU ABOVE TIDAL 30 M DOWNSTREAM OF FM 1942 AT EAST BANK Map	11118	0902	12	HG	HG	RT									4			4	4	4		Site was added to HG monitoring schedule in Fall 2011
CEDAR BAYOU ABOVE TIDAL 20 M DOWNSTREAM OF US 90 NORTHEAST OF CROSBY Map	11120	0902	12	TR	LL	RT									4						4	Trinity Bay Study
CEDAR BAYOU ABOVE TIDAL 20 M DOWNSTREAM OF US 90 NORTHEAST OF CROSBY Map	11120	0902	12	WC	FO	RT									4			4	4	4		
CEDAR BAYOU ABOVE TIDAL 45 M DOWNSTREAM OF FM 1980 NORTHEAST OF HUFFMAN Map	11123	0902	12	HG	HG	BS	4												4			Added in 2012 for 2 years only
CEDAR BAYOU ABOVE TIDAL 45 M DOWNSTREAM OF FM 1980 NORTHEAST OF HUFFMAN Map	11123	0902	12	HG	HG	RT									4			4	4	4		

9 record(s)

Currently monitored sites in the Trinity-San Jacinto Coastal Basin



Currently monitored sites in the Trinity-San Jacinto Coastal Basin



Coordinated Monitoring Schedule

River Basin: 9
FY: 2014

Login

Description (key word) Station Region Segment Submitting Entity Collecting Entity Monitoring Type

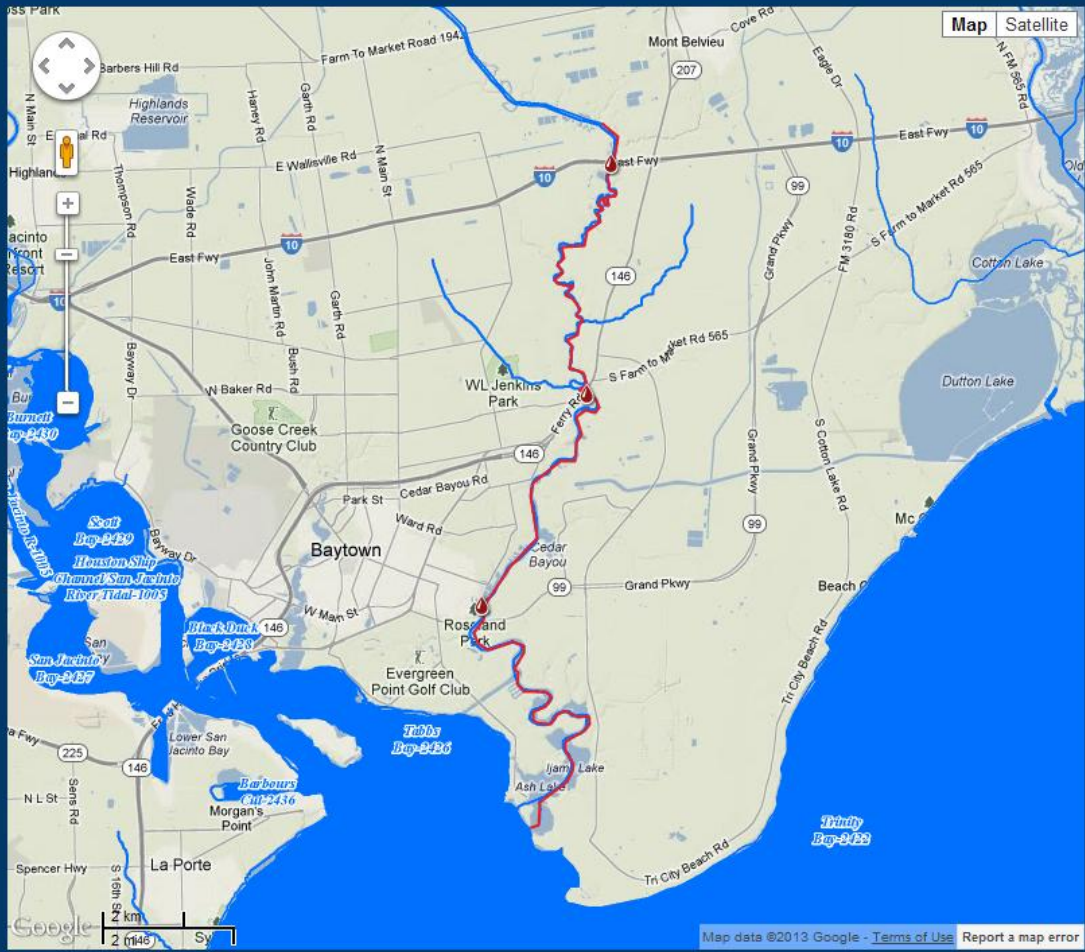
Site Description



Site Description	Station ID	Waterbody ID	Region	SE	CE	MT	24 hr DO	AqHab	Benthics	Nekton	Metal Water	Organic Water	Metal Sed	Organic Sed	Conv	Amb Tox Water	Amb Tox Sed	Bacteria	Flow	Fish Tissue	Field	Comments
Segment 901 Cedar Bayou Tidal Map																						
CEDAR BAYOU TIDAL AT ROSELAND PARK NEAR WEST BANK 245 M UPSTREAM OF SPUR 65 Map	11111	0901	12	WC	FO	RT									4			4			4	
CEDAR BAYOU TIDAL MID CHANNEL 45 M DOWNSTREAM OF SH 146 NORTHEAST OF BAYTOWN Map	11115	0901	12	HG	HG	RT									4			4			4	Site was added to HG monitoring schedule in Fall 2011
CEDAR BAYOU TIDAL AT IH 10 EASTBOUND BRIDGE SOUTH OF MONT BELVIEU EAST SIDE OF BAYOU Map	11117	0901	12	HG	HG	BS	4															Second year of 2-year effort to collect 24-hr DO.
CEDAR BAYOU TIDAL AT IH 10 EASTBOUND BRIDGE SOUTH OF MONT BELVIEU EAST SIDE OF BAYOU Map	11117	0901	12	HG	HG	RT									4			4			4	
Segment 902 Cedar Bayou Above Tidal Map																						
CEDAR BAYOU ABOVE TIDAL 30 M DOWNSTREAM OF FM 1942 AT EAST BANK Map	11118	0902	12	HG	HG	RT									4			4	4		4	Site was added to HG monitoring schedule in Fall 2011
CEDAR BAYOU ABOVE TIDAL 20 M DOWNSTREAM OF US 90 NORTHEAST OF CROSBY Map	11120	0902	12	TR	LL	RT									4						4	Trinity Bay Study
CEDAR BAYOU ABOVE TIDAL 20 M DOWNSTREAM OF US 90 NORTHEAST OF CROSBY Map	11120	0902	12	WC	FO	RT									4			4	4		4	
CEDAR BAYOU ABOVE TIDAL 45 M DOWNSTREAM OF FM 1960 NORTHEAST OF HUFFMAN Map	11123	0902	12	HG	HG	BS	4												4			Added in 2012 for 2 years only
CEDAR BAYOU ABOVE TIDAL 45 M DOWNSTREAM OF FM 1960 NORTHEAST OF HUFFMAN Map	11123	0902	12	HG	HG	RT									4			4	4		4	

9 record(s)

SEGMENT: 901 Cedar Bayou Tidal



Coordinated Monitoring Schedule

River Basin: 9
FY: 2014

Login

Description (key word) Station Region 12 Segment 901 902 Submitting Entity HG TR WC Collecting Entity FO HG LL Monitoring Type BS RT

Site Description	Station ID	Waterbody ID	Region	24	Metal	Organic Water	Metal Sed	Organic Sed	Conv	Amb Tox Water	Amb Tox Sed	Bacteria	Flow	Fish Tissue	Field	Comments
------------------	------------	--------------	--------	----	-------	---------------	-----------	-------------	------	---------------	-------------	----------	------	-------------	-------	----------

Report View:
View sites in a sortable report and download.

Segment 901 Cedar Bayou Tidal Map																	
CEDAR BAYOU TIDAL AT ROSELAND PARK NEAR WEST BANK 245 M UPSTREAM OF SPUR 55 Map	11111	0901	12	WC	FO	RT											
CEDAR BAYOU TIDAL MID CHANNEL 45 M DOWNSTREAM OF SH 146 NORTHEAST OF BAYTOWN Map	11115	0901	12	HG	HG	RT											Site was added to HG monitoring schedule in Fall 2011
CEDAR BAYOU TIDAL AT IH 10 EASTBOUND BRIDGE SOUTH OF MONT BELVIEU EAST SIDE OF BAYOU Map	11117	0901	12	HG	HG	BS	4										Second year of 2-year effort to collect 24-hr DO.
CEDAR BAYOU TIDAL AT IH 10 EASTBOUND BRIDGE SOUTH OF MONT BELVIEU EAST SIDE OF BAYOU Map	11117	0901	12	HG	HG	RT											
Segment 902 Cedar Bayou Above Tidal Map																	
CEDAR BAYOU ABOVE TIDAL 30 M DOWNSTREAM OF FM 1942 AT EAST BANK Map	11118	0902	12	HG	HG	RT											Site was added to HG monitoring schedule in Fall 2011
CEDAR BAYOU ABOVE TIDAL 20 M DOWNSTREAM OF US 90 NORTHEAST OF CROSBY Map	11120	0902	12	TR	LL	RT											Trinity Bay Study
CEDAR BAYOU ABOVE TIDAL 20 M DOWNSTREAM OF US 90 NORTHEAST OF CROSBY Map	11120	0902	12	WC	FO	RT											
CEDAR BAYOU ABOVE TIDAL 45 M DOWNSTREAM OF FM 1960 NORTHEAST OF HUFFMAN Map	11123	0902	12	HG	HG	BS	4										Added in 2012 for 2 years only
CEDAR BAYOU ABOVE TIDAL 45 M DOWNSTREAM OF FM 1960 NORTHEAST OF HUFFMAN Map	11123	0902	12	HG	HG	RT											

9 record(s)

Site Description	Station ID	Waterbody ID	Basin	Region	SE	CE	MT	Field	Conv	Bacteria	Flow	24 hr DO	AqHab	Benthics	Nekton	Metal Water	Organic Water	Metal Sed	Organic Sed	Fish Tissue	Amb Tox Water	Amb Tox Sed	Comments
CEDAR BAYOU TIDAL AT IH 10 EASTBOUND BRIDGE SOUTH OF MONT BELVIEU EAST SIDE OF BAYOU	11117	0901	9	12	HG	HG	BS					4											Second year of 2-year effort to collect 24-hr DO.
CEDAR BAYOU TIDAL AT IH 10 EASTBOUND BRIDGE SOUTH OF MONT BELVIEU EAST SIDE OF BAYOU	11117	0901	9	12	HG	HG	RT	4	4	4													
CEDAR BAYOU TIDAL AT ROSELAND PARK NEAR WEST BANK 245 M UPSTREAM OF SPUR 55	11111	0901	9	12	WC	FO	RT	4	4	4													
CEDAR BAYOU TIDAL MID CHANNEL 45 M DOWNSTREAM OF SH 146 NORTHEAST OF BAYTOWN	11115	0901	9	12	HG	HG	RT	4	4	4													Site was added to HG monitoring schedule in Fall 2011
CEDAR BAYOU ABOVE TIDAL 20 M DOWNSTREAM OF US 90 NORTHEAST OF CROSBY	11120	0902	9	12	TR	LL	RT	4	4														Trinity Bay Study
CEDAR BAYOU ABOVE TIDAL 20 M DOWNSTREAM OF US 90 NORTHEAST OF CROSBY	11120	0902	9	12	WC	FO	RT	4	4	4	4												
CEDAR BAYOU ABOVE TIDAL 30 M DOWNSTREAM OF FM 1942 AT EAST BANK	11118	0902	9	12	HG	HG	RT	4	4	4	4												Site was added to HG monitoring schedule in Fall 2011
CEDAR BAYOU ABOVE TIDAL 45 M DOWNSTREAM OF FM 1960 NORTHEAST OF HUFFMAN	11123	0902	9	12	HG	HG	BS					4	4										Added in 2012 for 2 years only
CEDAR BAYOU ABOVE TIDAL 45 M DOWNSTREAM OF FM 1960 NORTHEAST OF HUFFMAN	11123	0902	9	12	HG	HG	RT	4	4	4	4												

9 record(s) Download





2013 Coordinated Monitoring Meeting

- Tuesday, April 23rd
- Special Requests/Comments to Jean Wright by Friday, April 26, 2013

713-499-6660

jean.wright@h-gac.com