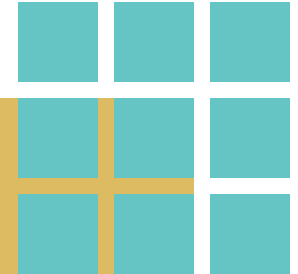


Clean Rivers Program



BASIN STEERING COMMITTEE MEETING



Coordinated Monitoring Report

April 1, 2015

H-GAC's Clean Rivers Program

CRP ASSESSMENT AREA

15 counties

4 Basins

16,000 miles of streams
& shoreline

Population 5+ million

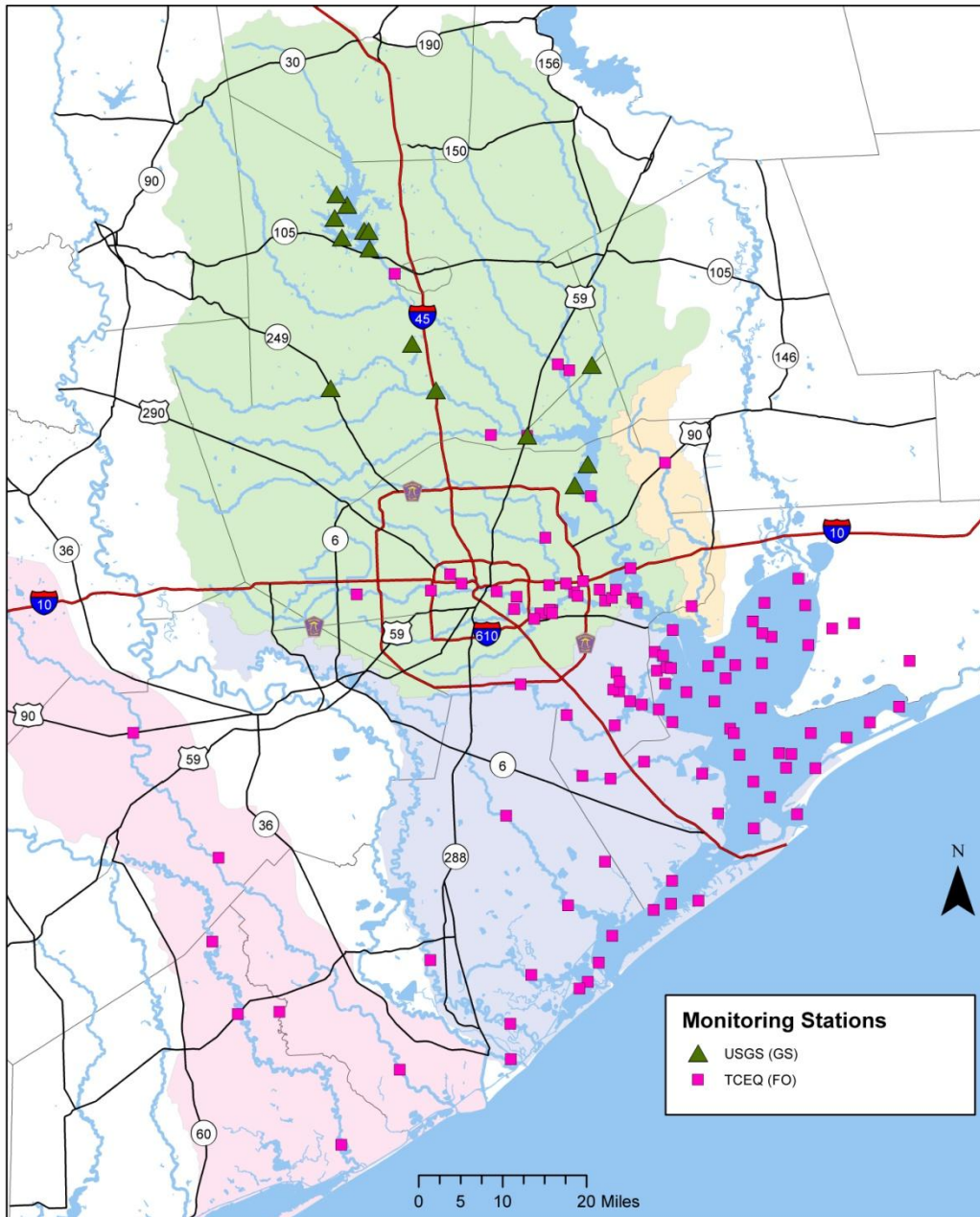


A decorative graphic in the top left corner consists of a 3x3 grid of teal squares. A gold horizontal bar spans the width of the slide, starting from the right side of the teal grid. The text "Coordinated Monitoring Meeting" is written in white on the gold bar.

Coordinated Monitoring Meeting

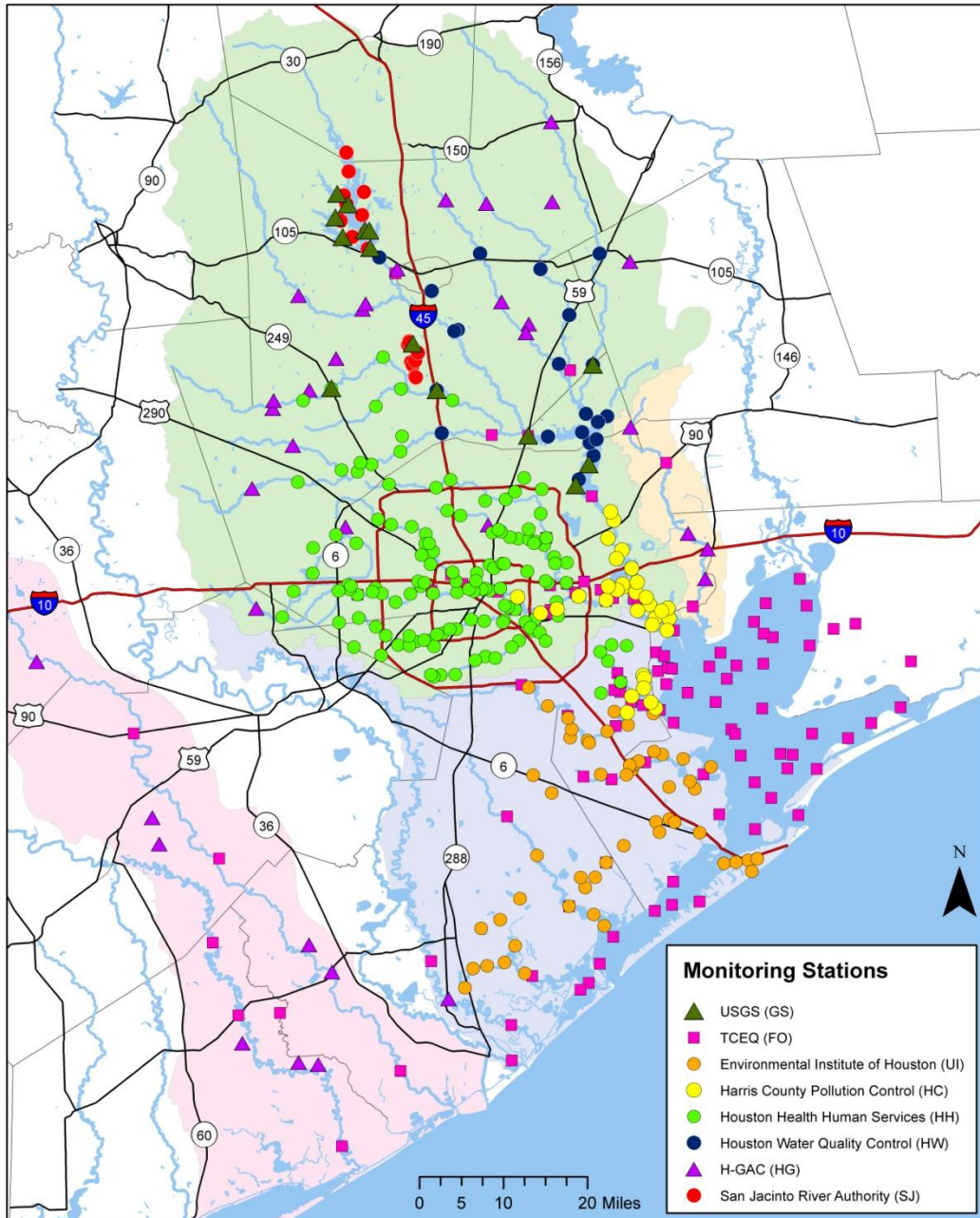
- Annual event – April 14, 2015
- Day long
- Agencies - TCEQ, TSSWCB, GBEP & USGS
- Local partners
- Review of state Watershed Action Plans

Water Quality Monitoring Stations



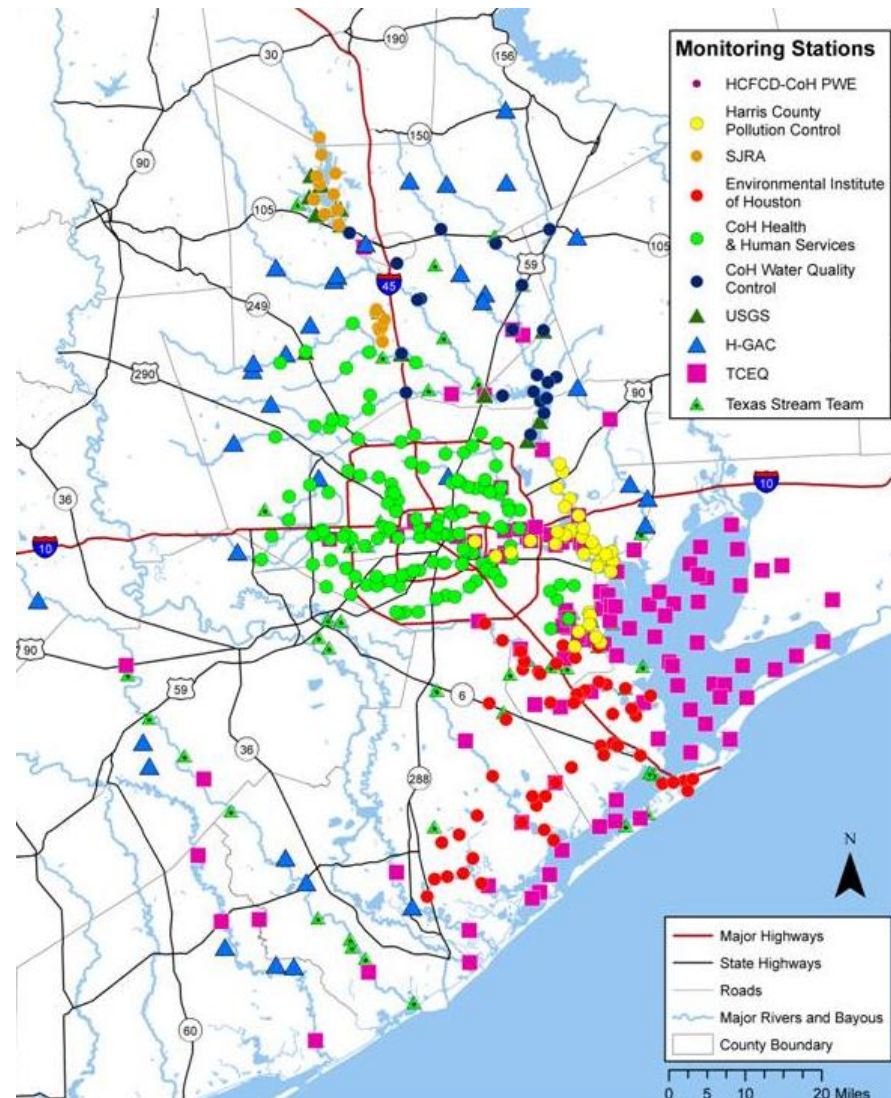
TCEQ & USGS
Monitoring Sites
only

Water Quality Monitoring Stations



TCEQ, USGS &
Local Partner
Monitoring Sites
only

Regional Coordinated Monitoring



PROFESSIONAL MONITORING

- Six local partners
+ TCEQ
+ USGS
- Over 370 sites
- Monitored at least quarterly
- Data quality-assured

Stream Team Monitoring

- 97 Volunteers
- 96 Sites

Partner Sites: Number & Frequency

- Health & Human Services – 133 x 9 mo/yr
- Water Quality Control – 21 monthly / bimonthly
- SJRA: Lake Conroe – 10 monthly
 - The Woodlands area – 9 field monthly, lab quarterly
- Harris County – 33 monthly/bimonthly
- Environmental Institute – 68 quarterly
- H-GAC – 20 quarterly

List of Parameters

Field

- Temperature
- Specific Conductance
- pH
- Dissolved Oxygen
- Transparency
- Days Since Last Precipitation
- Flow Severity
- Instantaneous Flow
- Plus several qualitative parameters

Laboratory

- Ammonia
- Nitrate + Nitrite
- Nitrate
- TKN (quarterly)
- Total Phosphorus
- Chlorophyll a (quarterly)
- TSS
- Sulfate
- Chloride
- Escherichia coli (E. coli)
- Enterococcus Bacteria (quarterly at freshwater sites)



Anticipated Changes – FY2015 to 2016

- Continue 24-hour DO monitoring – move 3 sites/segments
- Add site on Brushy Bayou, Brazoria County
- Move several sites due to changes in accessibility/safety/end of project

To Access Coordinated Monitoring Schedules

DIRECTLY

<http://cms.lcra.org/>

H-GAC'S WEBSITE

http://www.h-gac.com/community/water/rivers/data/coordinated_monitoring_schedule.aspx

THROUGH TCEQ'S WEBSITE

<http://www.tceq.state.tx.us/waterquality/clean-rivers/data/crp-resources.html>

Coordinated Monitoring Schedule

Clean Rivers Program partners and Texas Commission on Environmental Quality routinely monitor the water quality of rivers, lakes, bays and the Gulf of Mexico to determine if state standards are met. This site displays an interactive database that contains more than 1,800 sites monitored in Texas. Select a basin on the map to begin.

[Click here to view all sites.](#)

Choose Schedule FY:
(Fiscal Year is September 1-August 31)

2016



- Basin 1 - Canadian River
- Basin 2 - Red River
- Basin 3 - Sulphur River
- Basin 4 - Cypress Creek
- Basin 5 - Sabine River
- Basin 6 - Neches River
- Basin 7 - Neches-Trinity Coastal

- Basin 14 - Colorado River
- Basin 15 - Colorado-Lavaca Coastal
- Basin 16 - Lavaca River
- Basin 17 - Lavaca-Guadalupe Coastal
- Basin 18 - Guadalupe River
- Basin 19 - San Antonio River
- Basin 20 - San Antonio-Nueces Coastal

- TCEQ Region 1
- TCEQ Region 2
- TCEQ Region 3
- TCEQ Region 4
- TCEQ Region 5
- TCEQ Region 6
- TCEQ Region 7

- TCEQ Region 9
- TCEQ Region 10
- TCEQ Region 11
- TCEQ Region 12
- TCEQ Region 13
- TCEQ Region 14
- TCEQ Region 15

Brazos-Colorado Coastal Basin

The Brazos-Colorado Coastal Basin is a flat coastal plain between the Brazos and Colorado Rivers. The San Bernard River and Caney Creek are the principal streams in the basin. Linnville Bayou is an unclassified water body of significant use which flows into the tidal portion of Caney Creek. The total basin drainage area is 1,850 square miles. For water quality monitoring purposes, the basin has been divided into four classified stream segments, which include 270 stream miles and one unclassified stream which is 23 miles long.

[Click here to view all sites.](#)

Choose Schedule FY:
(Fiscal Year is September 1-August 31)

2016



- Basin 1 - Canadian River
- Basin 2 - Red River
- Basin 3 - Sulphur River
- Basin 4 - Cypress Creek
- Basin 5 - Sabine River
- Basin 6 - Neches River
- Basin 7 - Neches-Trinity Coastal

- Basin 14 - Colorado River
- Basin 15 - Colorado-Lavaca Coastal
- Basin 16 - Lavaca River
- Basin 17 - Lavaca-Guadalupe Coastal
- Basin 18 - Guadalupe River
- Basin 19 - San Antonio River
- Basin 20 - San Antonio-Nueces Coastal

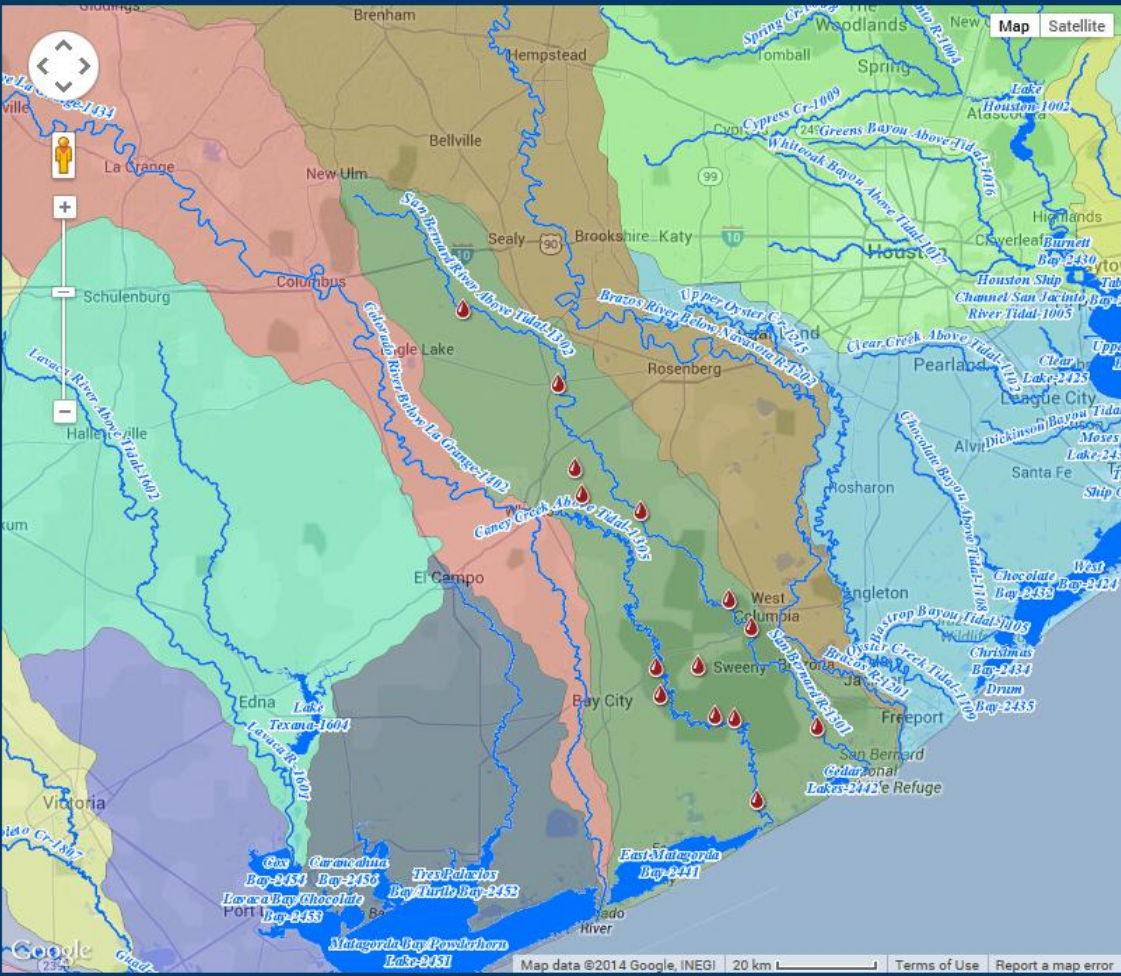
- TCEQ Region 1
- TCEQ Region 2
- TCEQ Region 3
- TCEQ Region 4
- TCEQ Region 5
- TCEQ Region 6
- TCEQ Region 7
- TCEQ Region 8
- TCEQ Region 9
- TCEQ Region 10
- TCEQ Region 11
- TCEQ Region 12
- TCEQ Region 13
- TCEQ Region 14
- TCEQ Region 15
- TCEQ Region 16

Description (key word) Station Region 12 Segment 1301 1302 1304 1305 Submitting Entity HG WC Collecting Entity FO HG Monitoring Type BS RT

Site Description	Station ID	Waterbody ID	Region	SE	CE	MT	24 hr DO	AqHab	Benthics	Nekton	Metal Water	Organic Water	Metal Sed	Organic Sed	Conv	Amb Tox Water	Amb Tox Sed	Bacteria	Flow	Fish Tissue	Field	Comments
Segment 1301 San Bernard River Tidal Map																						
SAN BERNARD RIVER TIDAL EAST BANK IMMEDIATELY UPSTREAM OF FM 2611 Map	12146	1301	12	WC	FO	RT									4			4		4		
SAN BERNARD RIVER TIDAL AT SH 35 SOUTHWEST OF WEST COLUMBIA Map	20460	1301	12	HG	HG	RT									4			4			4	was HG178
Segment 1302 San Bernard River Above Tidal Map																						
SAN BERNARD RIVER MID CHANNEL 80 M DOWNSTREAM OF FM 442 BRIDGE SW OF NEEDVILLE Map	12147	1302	12	WC	FO	RT									4			4	4		4	
SAN BERNARD RIVER IMMEDIATELY DOWNSTREAM OF FM 3013 ON THE COLORADO-AUSTIN COUNTY LINE APPROXIMATELY 15KM SW OF SEALY Map	16370	1302	12	HG	HG	RT									4			4	4		4	
SAN BERNARD RIVER IMMEDIATELY DOWNSTREAM OF US90A IN EAST BERNARD Map	16373	1302	12	WC	FO	RT									4			4	4		4	Western Eco Region Site
WEST BERNARD CREEK AT WHARTON CR 225 IN EAST OF HUNGERFORD Map	20721	1302B	12	HG	HG	BS	4												4			
WEST BERNARD CREEK AT WHARTON CR 225 IN EAST OF HUNGERFORD Map	20721	1302B	12	HG	HG	RT									4			4	4		4	replaces temp id HG-185
PEACH CREEK AT WHARTON CR 117/CHUDALLA ROAD/ARCHER ROAD 89 METERS SOUTH OF THE INTERSECTION OF WHARTON CR 117/CHUDALLA ROAD/ARCHER ROAD AND WHARTON CR 121/ WHARTON CR 119/DONALDSON ROAD IN EAST OF WHARTON Map	20722	1302D	12	HG	HG	RT									4			4	4		4	replaces temp id HG-186
MOUND CREEK AT BRAZORIA CR 450/JACKSON SETTLEMENT ROAD 1.22 KILOMETERS UPSTREAM OF FM 1301 IN WEST OF WEST COLUMBIA Map	20723	1302E	12	HG	HG	RT									4			4	4		4	replaces temp id HG-187
Segment 1304 Caney Creek Tidal Map																						
CANEY CREEK TIDAL MID CHANNEL AT CHAMBLESS RD Map	12148	1304	12	WC	FO	RT									4			4			4	
CANEY CREEK IMMEDIATELY UPSTREAM OF CONCRETE BRIDGE 210 M DOWNSTREAM OF LINVILLE BAYOU CONFLUENCE AND ADJACENT TO FM 521 Map	12151	1304	12	HG	HG	RT									4			4	4		4	Added in FY2014
LINVILLE BAYOU 35 M DOWNSTREAM OF SIMS ROAD APPROXIMATELY 5.20 KM UPSTREAM OF MOUTH Map	12138	1304A	12	HG	HG	RT									4			4			4	
LINVILLE BAYOU 35 M UPSTREAM OF FM 324/HASEMA ROAD Map	12141	1304A	12	WC	FO	RT									4			4			4	
Segment 1305 Caney Creek Above Tidal Map																						
CANEY CREEK AT SH 35 APPROXIMATELY 3.75 KM NE OF VAN VLECK Map	12154	1305	12	WC	FO	RT									4			4	4		4	
HARDEMAN SLOUGH IMMEDIATELY DOWNSTREAM OF ALLENHURST RD NE OF FM 2540 NEAR ALLENHURST COMMUNITY Map	12135	1305A	12	HG	HG	RT									4			4	4		4	Added in FY2014

15 record(s)

Currently monitored sites in the Brazos-Colorado Coastal Basin



Coordinated Monitoring Schedule

 River Basin: 13
 FY: 2016

[Login](#)

Description (key word)
 Station
 Region
 Segment
 Submitting Entity
 Collecting Entity
 Monitoring Type

Site Description	Station ID	Waterbody ID	Region	24	Metal	Organic Water	Metal Sed	Organic Sed	Conv	Amb Tox Water	Amb Tox Sed	Bacteria	Flow	Fish Tissue	Field	Comments
Segment 1301 San Bernard River Tidal Map																
SAN BERNARD RIVER TIDAL EAST BANK IMMEDIATELY UPSTREAM OF FM 2811 Map																
SAN BERNARD RIVER TIDAL EAST BANK IMMEDIATELY UPSTREAM OF FM 2811 Map	12146	1301	12													
SAN BERNARD RIVER TIDAL AT SH 35 SOUTHWEST OF WEST COLUMBIA Map	20480	1301	12	HG HG RT												was HG176
Segment 1302 San Bernard River Above Tidal Map																
SAN BERNARD RIVER MID CHANNEL 60 M DOWNSTREAM OF FM 442 BRIDGE SW OF NEEDVILLE Map																
SAN BERNARD RIVER MID CHANNEL 60 M DOWNSTREAM OF FM 442 BRIDGE SW OF NEEDVILLE Map	12147	1302	12	WC FO RT												
SAN BERNARD RIVER IMMEDIATELY DOWNSTREAM OF FM 3013 ON THE COLORADO-AUSTIN COUNTY LINE APPROXIMATELY 15KM SW OF SEALY Map																
SAN BERNARD RIVER IMMEDIATELY DOWNSTREAM OF FM 3013 ON THE COLORADO-AUSTIN COUNTY LINE APPROXIMATELY 15KM SW OF SEALY Map	16370	1302	12	HG HG RT												
SAN BERNARD RIVER IMMEDIATELY DOWNSTREAM OF US90A IN EAST BERNARD Map																
SAN BERNARD RIVER IMMEDIATELY DOWNSTREAM OF US90A IN EAST BERNARD Map	16373	1302	12	WC FO RT												Western Eco Region Site
WEST BERNARD CREEK AT WHARTON CR 225 IN EAST OF HUNGERFORD Map																
WEST BERNARD CREEK AT WHARTON CR 225 IN EAST OF HUNGERFORD Map	20721	1302B	12	HG HG BS 4												
WEST BERNARD CREEK AT WHARTON CR 225 IN EAST OF HUNGERFORD Map																
WEST BERNARD CREEK AT WHARTON CR 225 IN EAST OF HUNGERFORD Map	20721	1302B	12	HG HG RT												replaces temp id HG-185
PEACH CREEK AT WHARTON CR 117/CHUDALLA ROAD/ARCHER ROAD 89 METERS SOUTH OF THE INTERSECTION OF WHARTON CR 117/CHUDALLA ROAD/ARCHER ROAD AND WHARTON CR 121/WHARTON CR 119/DONALDSON ROAD IN EAST OF WHARTON Map																
PEACH CREEK AT WHARTON CR 117/CHUDALLA ROAD/ARCHER ROAD 89 METERS SOUTH OF THE INTERSECTION OF WHARTON CR 117/CHUDALLA ROAD/ARCHER ROAD AND WHARTON CR 121/WHARTON CR 119/DONALDSON ROAD IN EAST OF WHARTON Map	20722	1302D	12	HG HG RT												replaces temp id HG-186
MOUND CREEK AT BRAZORIA CR 450/JACKSON SETTLEMENT ROAD 1.22 KILOMETERS UPSTREAM OF FM 1301 IN WEST OF WEST COLUMBIA Map																
MOUND CREEK AT BRAZORIA CR 450/JACKSON SETTLEMENT ROAD 1.22 KILOMETERS UPSTREAM OF FM 1301 IN WEST OF WEST COLUMBIA Map	20723	1302E	12	HG HG RT												replaces temp id HG-187
Segment 1304 Caney Creek Tidal Map																
CANEY CREEK TIDAL MID CHANNEL AT CHAMBLESS RD Map																
CANEY CREEK TIDAL MID CHANNEL AT CHAMBLESS RD Map	12148	1304	12	WC FO RT												
CANEY CREEK IMMEDIATELY UPSTREAM OF CONCRETE BRIDGE 210 M DOWNSTREAM OF LINVILLE BAYOU CONFLUENCE AND ADJACENT TO FM 521 Map																
CANEY CREEK IMMEDIATELY UPSTREAM OF CONCRETE BRIDGE 210 M DOWNSTREAM OF LINVILLE BAYOU CONFLUENCE AND ADJACENT TO FM 521 Map	12151	1304	12	HG HG RT												Added in FY2014
LINVILLE BAYOU 35 M DOWNSTREAM OF SIMS ROAD APPROXIMATELY 5.20 KM UPSTREAM OF MOUTH Map																
LINVILLE BAYOU 35 M DOWNSTREAM OF SIMS ROAD APPROXIMATELY 5.20 KM UPSTREAM OF MOUTH Map	12138	1304A	12	HG HG RT												
LINVILLE BAYOU 35 M UPSTREAM OF FM 324/HASEMA ROAD Map																
LINVILLE BAYOU 35 M UPSTREAM OF FM 324/HASEMA ROAD Map	12141	1304A	12	WC FO RT												
Segment 1305 Caney Creek Above Tidal Map																
CANEY CREEK AT SH 35 APPROXIMATELY 3.75 KM NE OF VAN VLECK Map																
CANEY CREEK AT SH 35 APPROXIMATELY 3.75 KM NE OF VAN VLECK Map	12154	1305	12	WC FO RT												
HARDEMAN SLOUGH IMMEDIATELY DOWNSTREAM OF ALLENHURST RD NE OF FM 2540 NEAR ALLENHURST COMMUNITY Map																
HARDEMAN SLOUGH IMMEDIATELY DOWNSTREAM OF ALLENHURST RD NE OF FM 2540 NEAR ALLENHURST COMMUNITY Map	12135	1305A	12	HG HG RT												Added in FY2014

15 record(s)

Coordinated Monitoring Schedule

River Basin: 13
FY: 2014

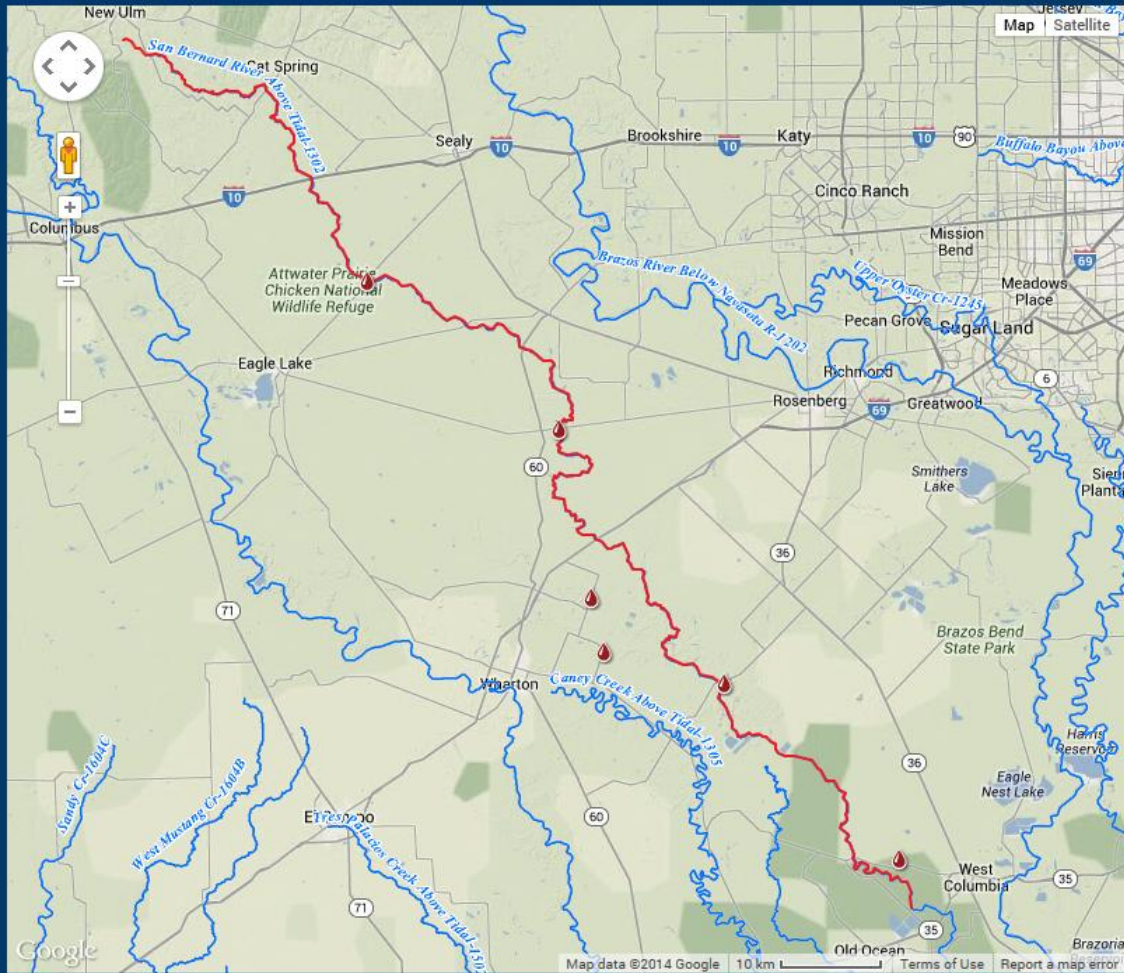
User hgac Add New

Description (key word) Station Region Segment Submitting Entity Collecting Entity Monitoring Type

Site Description	Station ID	Waterbody ID	Region	SE	CE	MT	24 hr DO	AqHab	Benthics	Nekton	Metal Water	Organic Water	Metal Sed	Organic Sed	Conv	Amb Tox Water	Amb Tox Sed	Bacteria	Flow	Fish Tissue	Field	Comments
Segment 1301 San Bernard River Tidal Map																						
SAN BERNARD RIVER TIDAL EAST BANK IMMEDIATELY UPSTREAM OF FM 2811 Map	12148	1301	12	WC	FO	RT									4			4		4		
SAN BERNARD RIVER TIDAL AT SH 35 SOUTHWEST OF WEST COLUMBIA Map	20460	1301	12	HG	HG	RT									4			4		4		was HG176
Segment 1302 San Bernard River Above Tidal Map																						
SAN BERNARD RIVER MID CHANNEL 60 M DOWNSTREAM OF BRIDGE SW OF NEEDVILLE Map	12147	1302	12	WC	FO	RT									4			4	4	4		
SAN BERNARD RIVER IMMEDIATELY DOWNSTREAM OF THE COLORADO-AUSTIN COUNTY LINE APPROXIMATELY 150 M OF SEALY Map	16370	1302	12	HG	HG	RT									4			4	4	4		
SAN BERNARD RIVER IMMEDIATELY DOWNSTREAM OF US90A IN EAST BERNARD Map	16373	1302	12	WC	FO	RT									4			4	4	4		Western Eco Region Site
WEST BERNARD CREEK AT WHARTON CR 225 IN EAST OF HUNGERFORD Map	20721	1302B	12	HG	HG	BS	3												3			
WEST BERNARD CREEK AT WHARTON CR 225 IN EAST OF HUNGERFORD Map	20721	1302B	12	HG	HG	RT									4			4	4	4		replaces temp id HG-185
PEACH CREEK AT WHARTON CR 117/CHUDALLA ROAD/ARCHER ROAD 89 METERS SOUTH OF THE INTERSECTION OF WHARTON CR 117/CHUDALLA ROAD/ARCHER ROAD AND WHARTON CR 121/WHARTON CR 119/DONALDSON ROAD IN EAST OF WHARTON Map	20722	1302D	12	HG	HG	RT									4			4	4	4		replaces temp id HG-188
MOUND CREEK AT BRAZORIA CR 450/JACKSON SETTLEMENT ROAD 1.22 KILOMETERS UPSTREAM OF FM 1301 IN WEST OF WEST COLUMBIA Map	20723	1302E	12	HG	HG	RT									4			4	4	4		replaces temp id HG-187
Segment 1304 Caney Creek Tidal Map																						
CANEY CREEK TIDAL MID CHANNEL AT CHAMBLESS RD Map	12148	1304	12	WC	FO	RT									4			4		4		
CANEY CREEK IMMEDIATELY UPSTREAM OF CONCRETE BRIDGE 210 M DOWNSTREAM OF LINVILLE BAYOU CONFLUENCE AND ADJACENT TO FM 521 Map	12151	1304	12	HG	HG	RT									4			4	4	4		Added in FY2014
LINVILLE BAYOU 35 M DOWNSTREAM OF SIMS ROAD APPROXIMATELY 5.20 KM UPSTREAM OF MOUTH Map	12138	1304A	12	HG	HG	RT									4			4		4		
LINVILLE BAYOU 35 M UPSTREAM OF FM 324/HASEMA ROAD Map	12141	1304A	12	WC	FO	RT									4			4		4		
Segment 1305 Caney Creek Above Tidal Map																						
CANEY CREEK AT SH 35 APPROXIMATELY 3.75 KM NE OF VAN VLECK Map	12154	1305	12	WC	FO	RT									4			4	4	4		
HARDEMAN SLOUGH IMMEDIATELY DOWNSTREAM OF ALLENHURST RD NE OF FM 2640 NEAR ALLENHURST COMMUNITY Map	12135	1305A	12	HG	HG	RT									4			4	4	4		Added in FY2014
CANEY CREEK AT HILL ROAD SOUTH OF PLEDGER IN MATAGORDA COUNTY Map	20468	1305B	12	WC	FO	RT									4			4	4	4		

16 record(s)

SEGMENT: 1302 San Bernard River Above Tidal



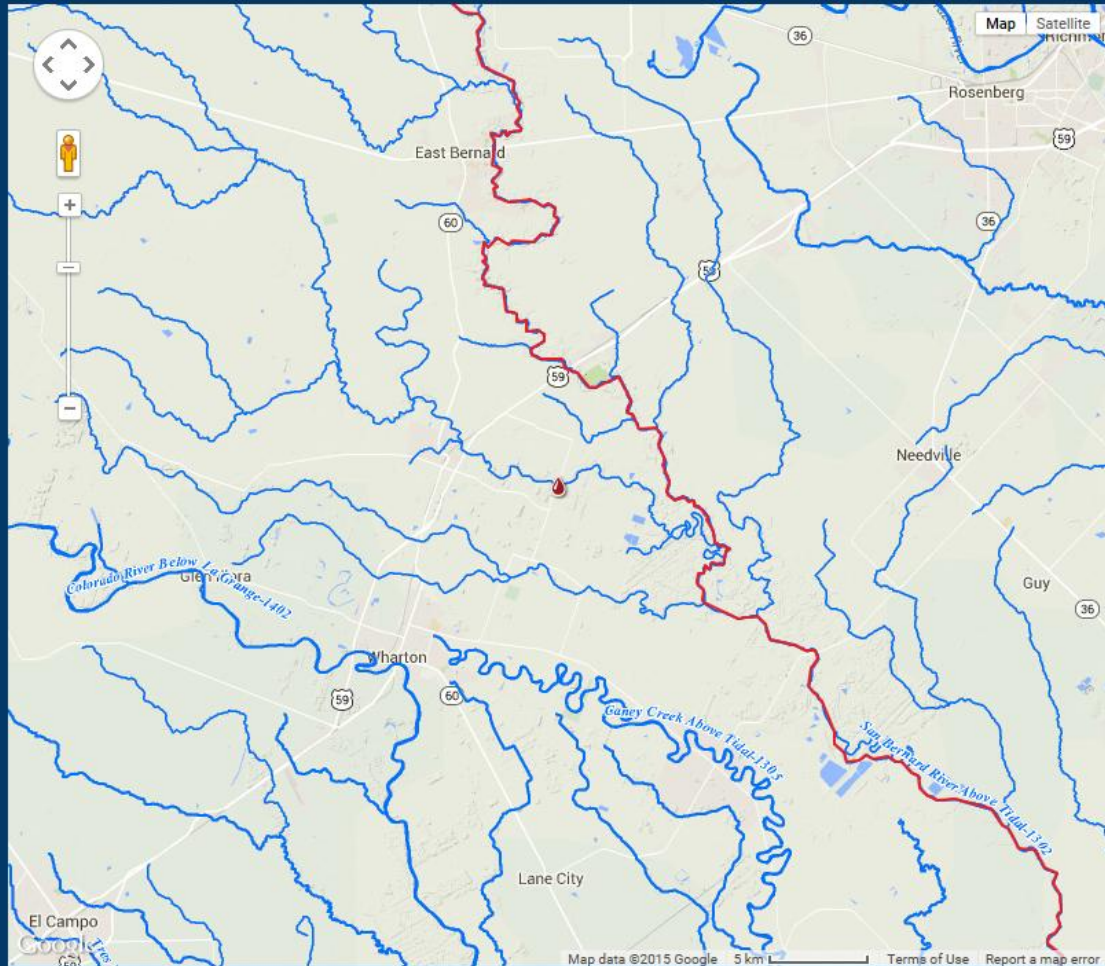
Coordinated Monitoring Schedule River Basin: 13 FY: 2016 Login

Description (key word) Station Region 12 Segment 1301 1302 1304 1305 Submitting Entity HG WC Collecting Entity FO HG Monitoring Type BS RT

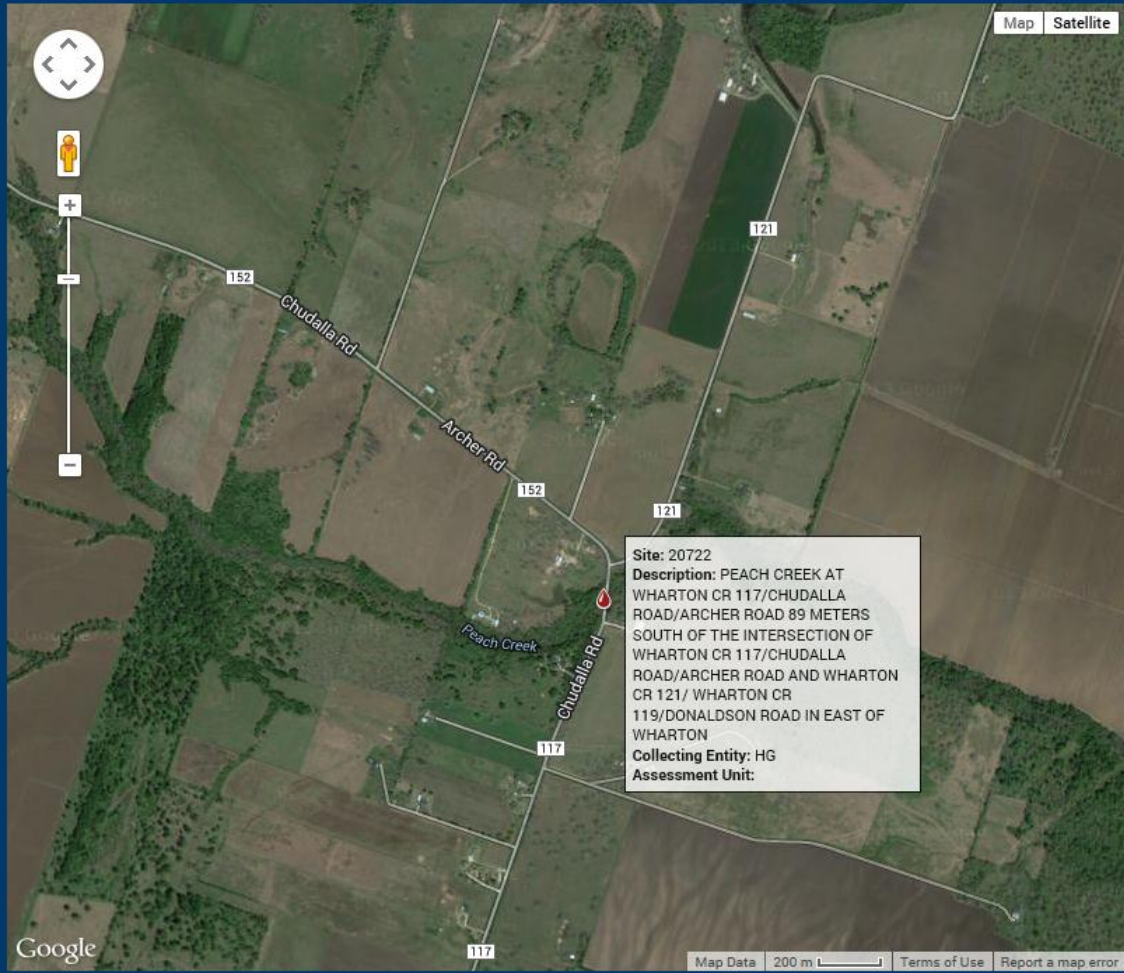
Site Description	Station ID	Waterbody ID	Region	SE	CE	MT	24 hr DO	AqHab	Benthics	Nekton	Metal Water	Organic Water	Metal Sed	Organic Sed	Conv	Amb Tox Water	Amb Tox Sed	Bacteria	Flow	Fish Tissue	Field	Comments
Segment 1301 San Bernard River Tidal Map																						
SAN BERNARD RIVER TIDAL AT SH 35 SOUTHWEST OF WEST COLUMBIA Map	20480	1301	12	HG	HG	RT									4			4		4		was HG176
Segment 1302 San Bernard River Above Tidal Map																						
SAN BERNARD RIVER IMMEDIATELY DOWNSTREAM OF FM 3013 ON THE COLORADO-AUSTIN COUNTY LINE APPROXIMATELY 15KM SW OF SEALY Map	16370	1302	12	HG	HG	RT									4			4	4	4		
WEST BERNARD CREEK AT WHARTON CR 225 IN EAST OF HUNGERFORD Map	20721	1302B	12	HG	HG	BS	4												4			
WEST BERNARD CREEK AT WHARTON CR 225 IN EAST OF HUNGERFORD Map	20721	1302B	12	HG	HG	RT									4			4	4	4		replaces temp id HG-185
PEACH CREEK AT WHARTON CR 117/CHUDALLA ROAD/ARCHER ROAD 89 METERS SOUTH OF THE INTERSECTION OF WHARTON CR 117/CHUDALLA ROAD/ARCHER ROAD AND WHARTON CR 121/WHARTON CR 119/DONALDSON ROAD IN EAST OF WHARTON Map	20722	1302D	12	HG	HG	RT									4			4	4	4		replaces temp id HG-186
MOUND CREEK AT BRAZORIA ROAD/JACKSON SETTLEMENT ROAD 1.22 KILOMETERS UPSTREAM OF STATION 1301 IN WEST OF WEST COLUMBIA Map	20723	1302E	12	HG	HG	RT									4			4	4	4		replaces temp id HG-187
Segment 1304 Caney Creek Tidal Map																						
CANEY CREEK IMMEDIATELY UPSTREAM OF CONCRETE BRIDGE 210 M DOWNSTREAM OF LINVILLE BAYOU CONFLUENCE AND ADJACENT TO FM 521 Map	12151	1304	12	HG	HG	RT									4			4	4	4		Added in FY2014
LINVILLE BAYOU 35 M DOWNSTREAM OF SIMS ROAD APPROXIMATELY 5.20 KM UPSTREAM OF MOUTH Map	12138	1304A	12	HG	HG	RT									4			4		4		
Segment 1305 Caney Creek Above Tidal Map																						
HARDEMAN SLOUGH IMMEDIATELY DOWNSTREAM OF ALLENHURST RD NE OF FM 2540 NEAR ALLENHURST COMMUNITY Map	12135	1305A	12	HG	HG	RT									4			4	4	4		Added in FY2014

9 record(s)

TCEQ ID: 20721
WEST BERNARD CREEK AT WHARTON CR 225 IN EAST OF HUNGERFORD



SEGMENT: 1302 San Bernard River Above Tidal



Coordinated Monitoring Schedule River Basin: 13 FY: 2016 Login

Description (key word) Station Region 12 Segment 1301 1302 1304 1305 Submitting Entity HG WC Collecting Entity FO HG Monitoring Type BS RT

Site Description	Station ID	Waterbody ID	Region	SE	CE	MT	24 hr DO	AqHab	Benthics	Nekton	Metal Water	Organic Water	Metal Sed	Organic Sed	Conv	Amb Tox Water	Amb Tox Sed	Bacteria	Flow	Fish Tissue	Field	Comments
Segment 1301 San Bernard River Tidal Map																						
SAN BERNARD RIVER TIDAL EAST BANK IMMEDIATELY UPSTREAM OF FM 2811 Map	12148	1301	12	WC	FO	RT									4			4			4	
SAN BERNARD RIVER TIDAL AT SH 35 SOUTHWEST OF WEST COLUMBIA Map	20480	1301	12	HG	HG	RT									4			4			4	was HG176
Segment 1302 San Bernard River Above Tidal Map																						
SAN BERNARD RIVER MID CHANNEL 60 M DOWNSTREAM OF FM 442 BRIDGE SW OF NEEDVILLE Map	12147	1302	12	WC	FO	RT									4			4	4		4	
SAN BERNARD RIVER IMMEDIATELY DOWNSTREAM OF FM 3013 ON THE COLORADO-AUSTIN COUNTY LINE APPROXIMATELY 15KM SW OF SEALY Map	18370	1302	12	HG	HG	RT									4			4	4		4	
SAN BERNARD RIVER IMMEDIATELY DOWNSTREAM OF US90A IN EAST BERNARD Map	18373	1302	12	WC	FO	RT									4			4	4		4	Western Eco Region Site
WEST BERNARD CREEK AT WHARTON CR 225 IN EAST OF HUNGERFORD Map	20721	1302B	12	HG	HG	BS	4												4			
WEST BERNARD CREEK AT WHARTON CR 225 IN EAST OF HUNGERFORD Map	20721	1302B	12	HG	HG	RT									4			4	4		4	replaces temp id HG-185
PEACH CREEK AT WHARTON CR 117/CHUDALLA ROAD/ARCHER ROAD 89 METERS SOUTH OF THE INTERSECTION OF WHARTON CR 117/CHUDALLA ROAD/ARCHER ROAD AND WHARTON CR 121/ WHARTON CR 119/DONALDSON ROAD IN EAST OF WHARTON Map	20722	1302D	12	HG	HG	RT									4			4	4		4	replaces temp id HG-188
MOUND CREEK AT BRAZORIA CR 450/JACKSON SETTLEMENT ROAD 1.22 KILOMETERS UPSTREAM OF FM 1301 IN WEST OF WEST COLUMBIA Map	20723	1302E	12	HG	HG	RT									4			4	4		4	replaces temp id HG-187
Segment 1304 Caney Creek Tidal Map																						
CANEY CREEK TIDAL MID CHANNEL AT CHAMBLESS RD Map	12148	1304	12	WC	FO	RT									4			4			4	
CANEY CREEK IMMEDIATELY UPSTREAM OF CONCRETE BRIDGE 210 M DOWNSTREAM OF LINVILLE BAYOU CONFLUENCE AND ADJACENT TO FM 521 Map	12151	1304	12	HG	HG	RT									4			4	4		4	Added in FY2014
LINVILLE BAYOU 35 M DOWNSTREAM OF SIMS ROAD APPROXIMATELY 5.20 KM UPSTREAM OF MOUTH Map	12138	1304A	12	HG	HG	RT									4			4			4	
LINVILLE BAYOU 35 M UPSTREAM OF FM 324/HASEMA ROAD Map	12141	1304A	12	WC	FO	RT									4			4			4	
Segment 1305 Caney Creek Above Tidal Map																						
CANEY CREEK AT SH 35 APPROXIMATELY 3.75 KM NE OF VAN VLECK Map	12154	1305	12	WC	FO	RT									4			4	4		4	
HARDEMAN SLOUGH IMMEDIATELY DOWNSTREAM OF ALLENHURST RD NE OF FM 2640 NEAR ALLENHURST COMMUNITY Map	12135	1305A	12	HG	HG	RT									4			4	4		4	Added in FY2014

15 record(s)

Coordinated Monitoring Schedule

Clean Rivers Program partners and Texas Commission on Environmental Quality routinely monitor the water quality of rivers, lakes, bays and the Gulf of Mexico to determine if state standards are met. This site displays an interactive database that contains more than 1,800 sites monitored in Texas. Select a basin on the map to begin.

[Click here to view all sites.](#)

Choose Schedule FY:
(Fiscal Year is September 1-August 31)

2016



- Basin 1 - Canadian River
- Basin 2 - Red River
- Basin 3 - Sulphur River
- Basin 4 - Cypress Creek
- Basin 5 - Sabine River
- Basin 6 - Neches River
- Basin 7 - Neches-Trinity Coastal

- Basin 14 - Colorado River
- Basin 15 - Colorado-Lavaca Coastal
- Basin 16 - Lavaca River
- Basin 17 - Lavaca-Guadalupe Coastal
- Basin 18 - Guadalupe River
- Basin 19 - San Antonio River
- Basin 20 - San Antonio-Nueces Coastal

- TCEQ Region 1
- TCEQ Region 2
- TCEQ Region 3
- TCEQ Region 4
- TCEQ Region 5
- TCEQ Region 6
- TCEQ Region 7
- TCEQ Region 9
- TCEQ Region 10
- TCEQ Region 11
- TCEQ Region 12
- TCEQ Region 13
- TCEQ Region 14
- TCEQ Region 15

Questions?

THANK YOU FOR YOUR ATTENTION!



Jean Wright
Senior Environmental Planner
713.499.6660 / jean.wright@h-gac.com