



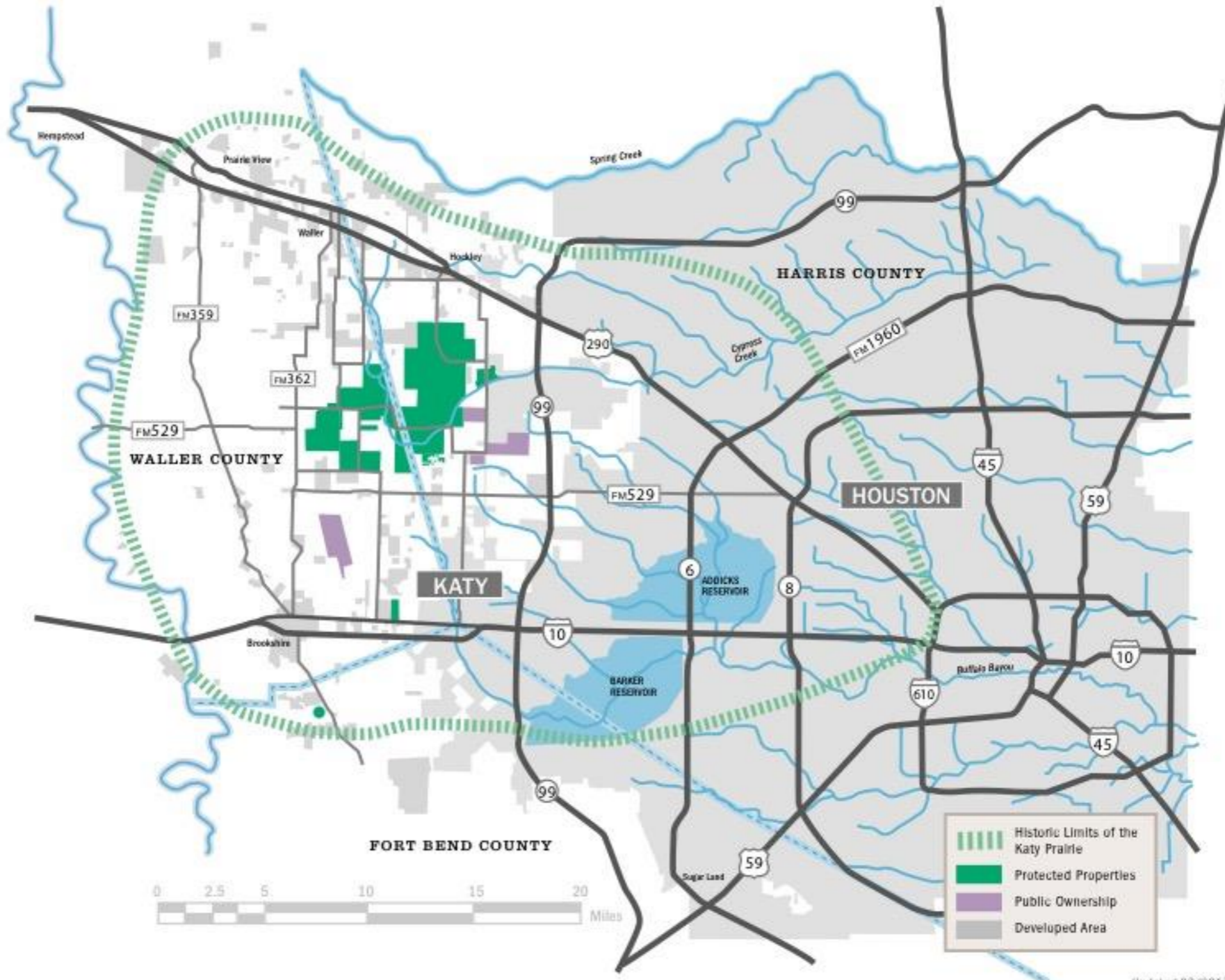
Mitigation Banking and Non-Profits

Mary Anne Piacentini, Executive Director



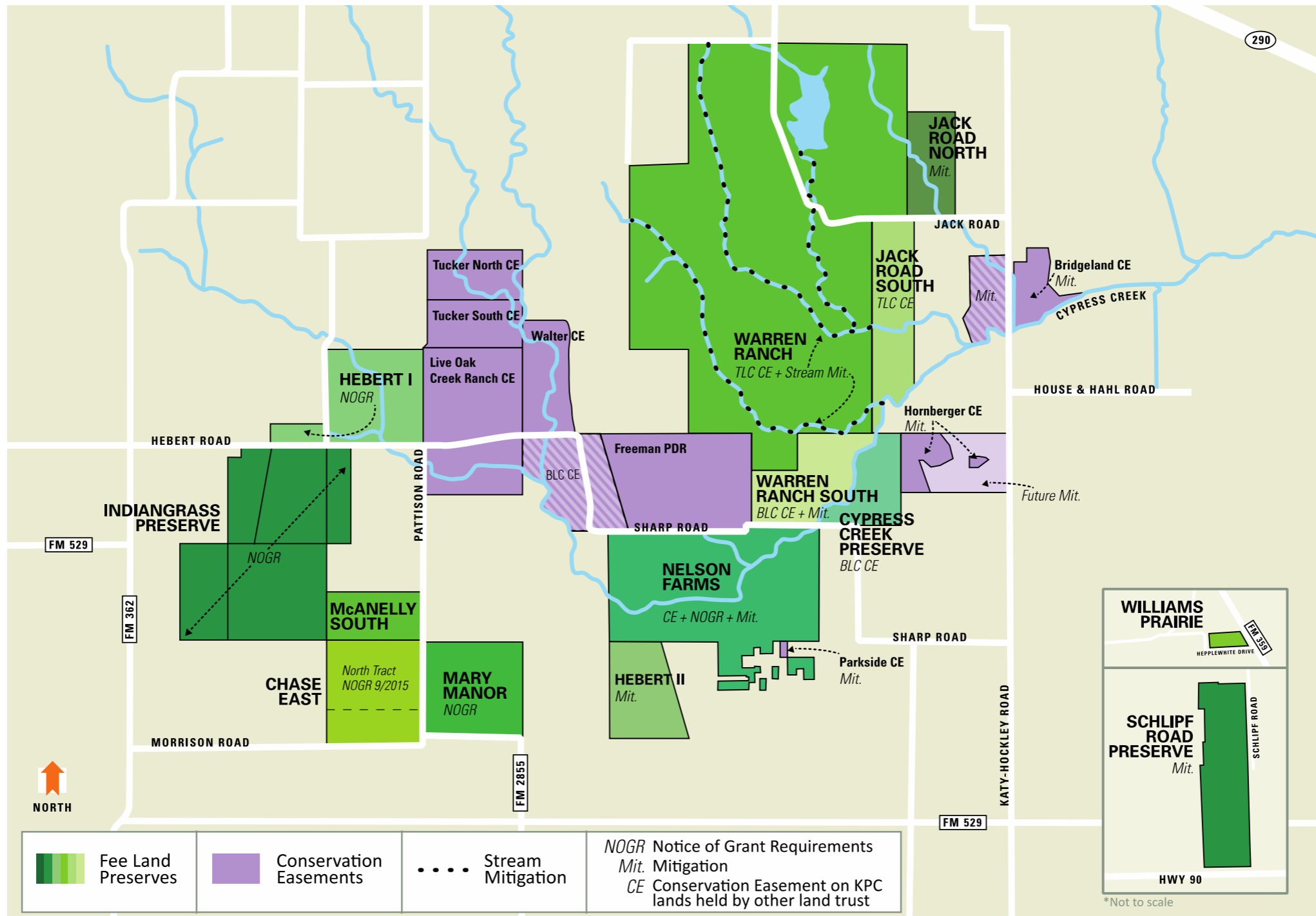
HISTORICAL RANGE OF COASTAL PRAIRIE ECOSYSTEM OF TEXAS AND LOUISIANA



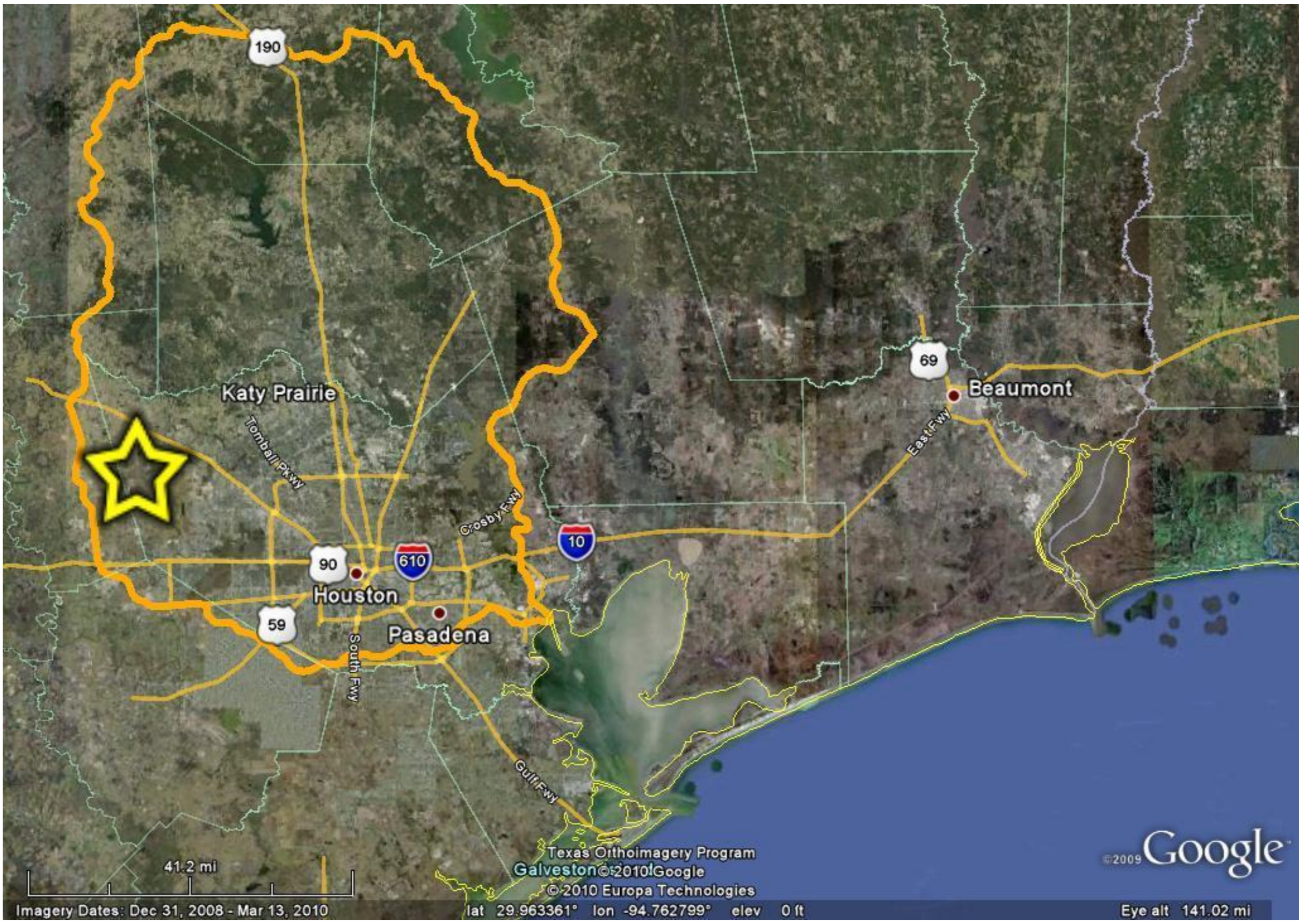


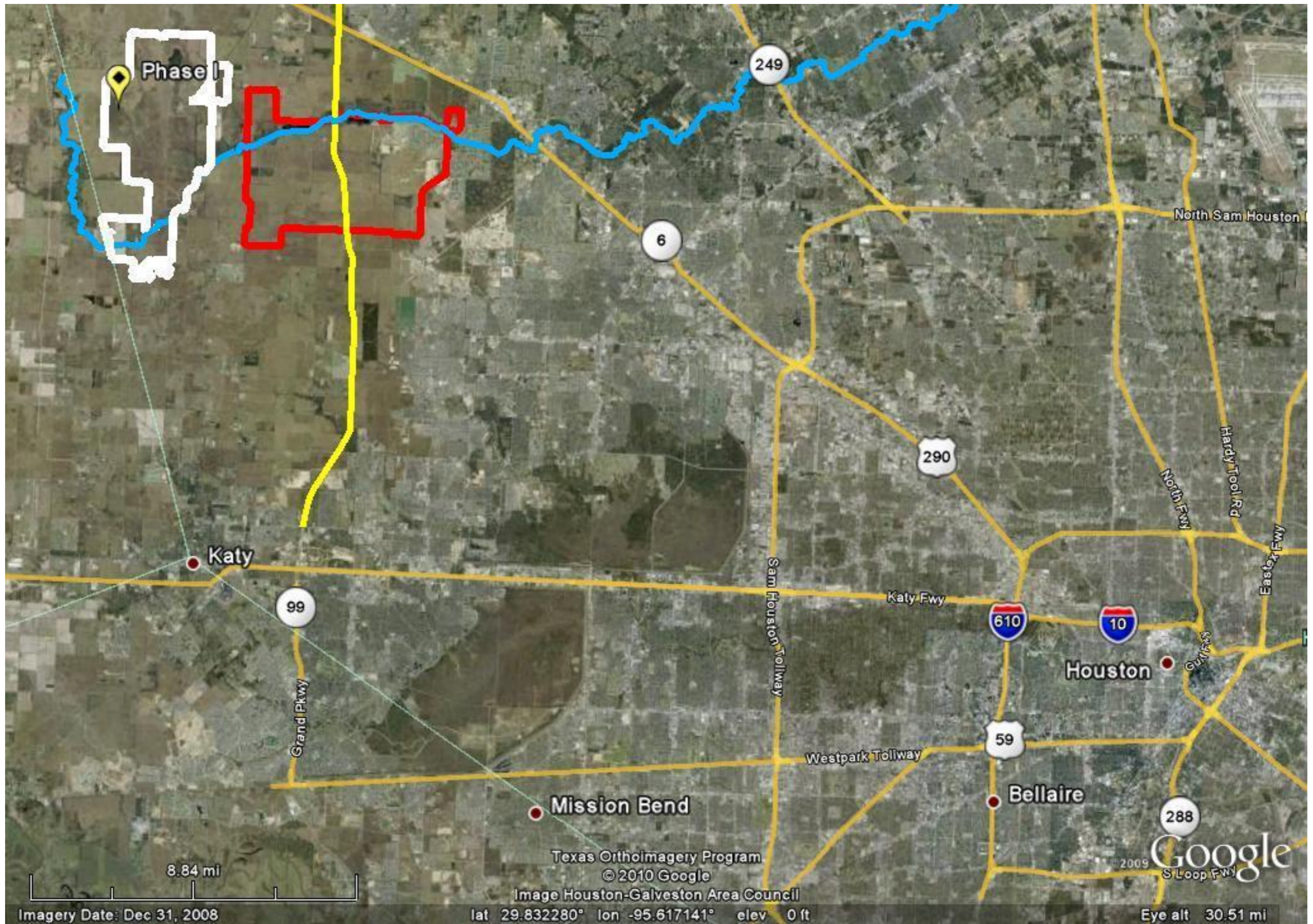
Updated 03/2017

Katy Prairie Conservancy Fee Land Preserves and CEs







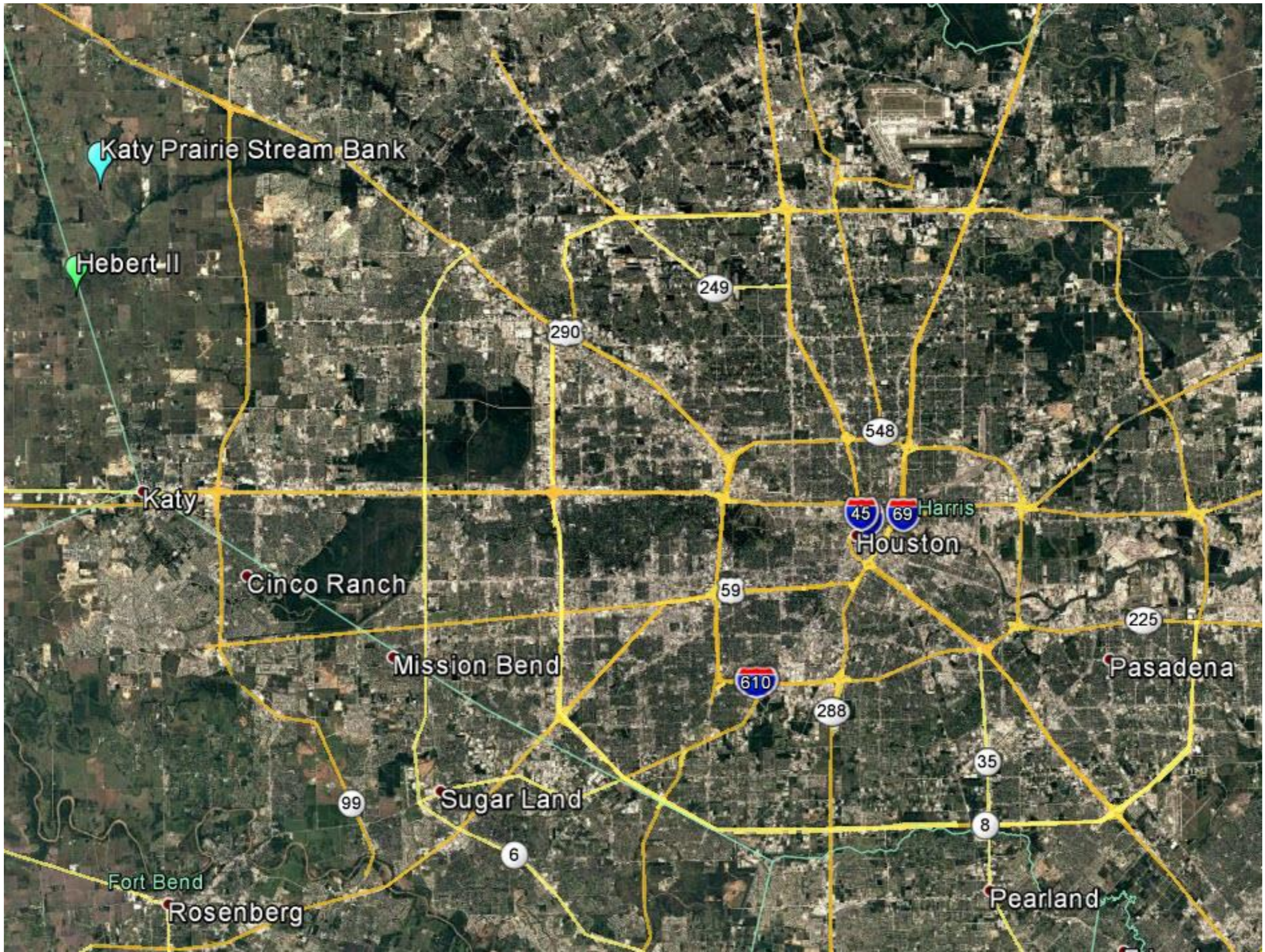






**KPC's Mary Manor Preserve
Wetland Project**





Hebert II Overview

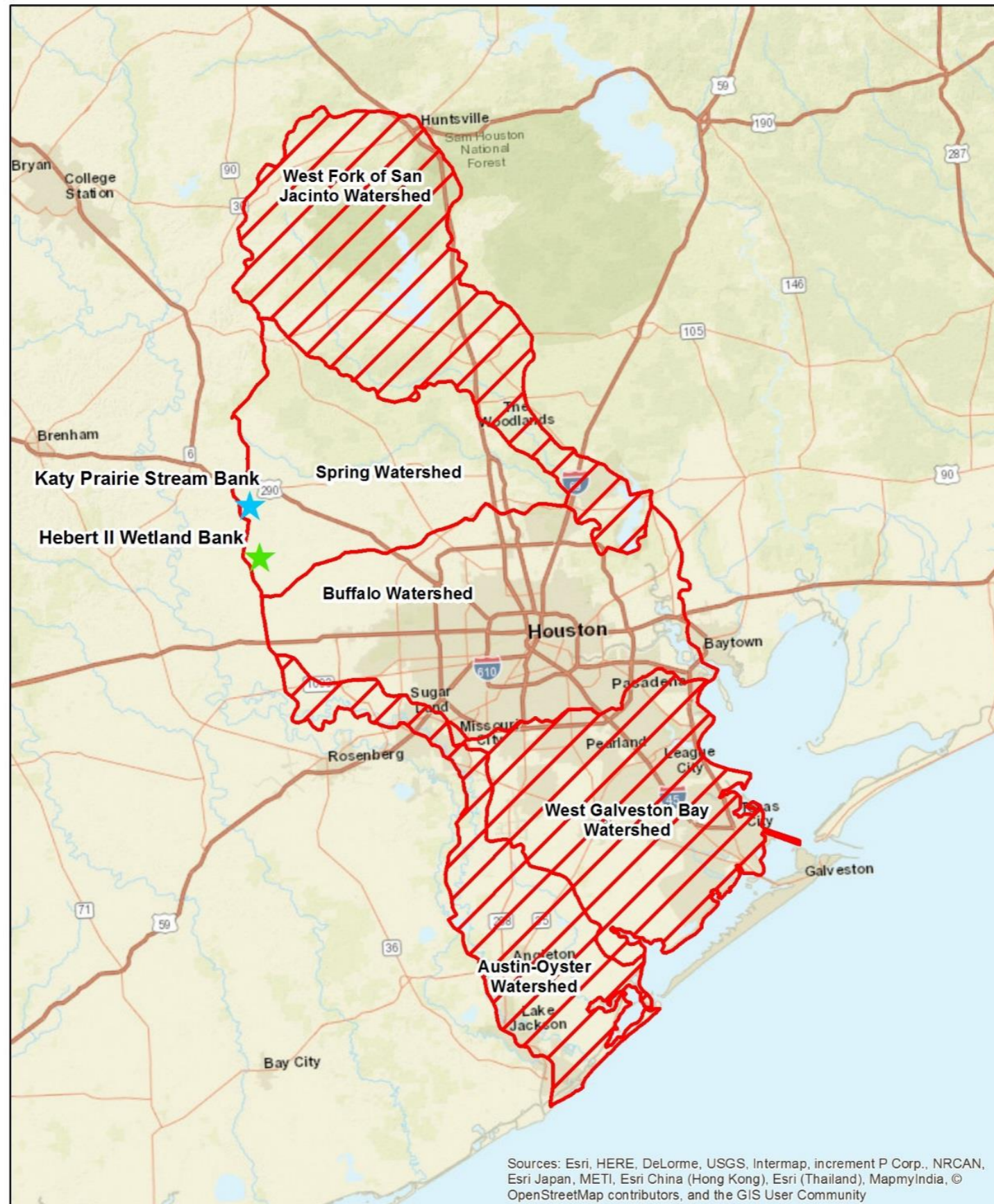
- **Located in Addicks/Barker Overflow Area**
- **Potential in substantial uptick in credit total with development of new tool for measuring functional lift of Palustrine Emergent Wetlands**
- **Prospectus submitted in August 2013**
- **Conceptual Mitigation Plan submitted in June of 2014**
- **DRAFT Mitigation Plan submitted in October 2016**
- **Resubmittal of DRAFT Mitigation Plan anticipated in April of 2017 (can we talk about long delay)**

KPSMUB Overview (Stream)



- The first major stream bank permitted in the Galveston District and one of the largest in the US
- Originally planned to be implemented in 5 phases over a 10-15 year period
- Phase 1 completed in early 2013 (~17,600')
- 3 of remaining 4 phases utilized to mitigate for impacts tied to Segments F1/F2/G of Grand Parkway (~62,000)
- Phase 2 DRAFT Mitigation Plan submittal in April of 2017

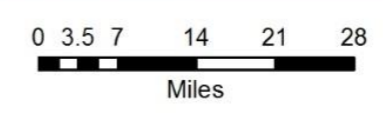
Phase I Approved Service Area

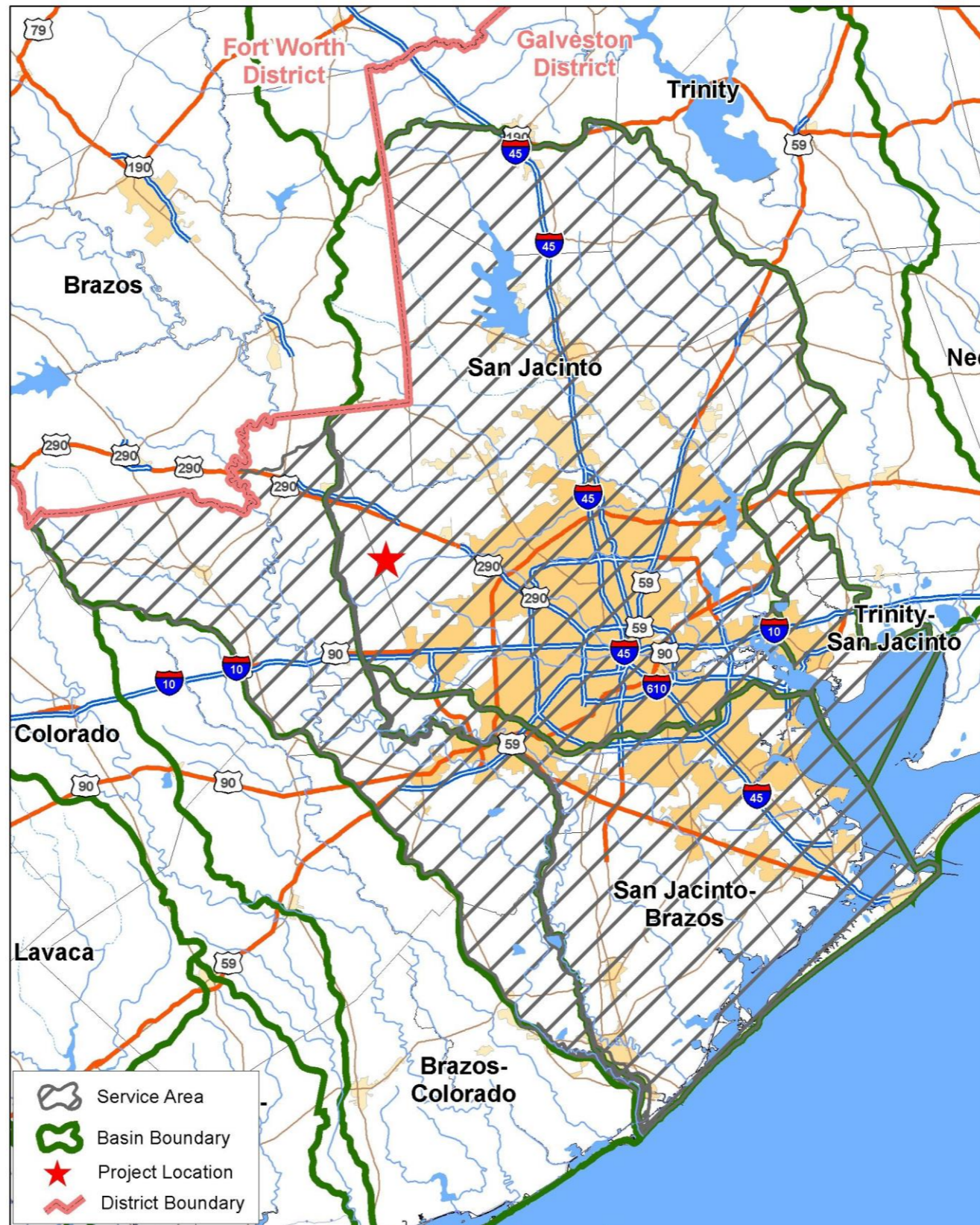
- **Primary**
 - **Spring (12040102)**
 - **Buffalo (12040104)**
- **Secondary**
 - **West Fork of San Jacinto (12040101)**
 - **West Galveston Bay (12040204)**
 - **Austin-Oyster (12040205)**



RS Restoration Systems, LLC
 1101 Haynes St. Suite 211
 Raleigh, NC 27604
 tel: 919.755.9490

-  Primary Service Area
-  Secondary Service Area






Katy Prairie Conservancy

Proposed Service Area


 1:1,000,000
 0 4 8 16 24 32
 Miles





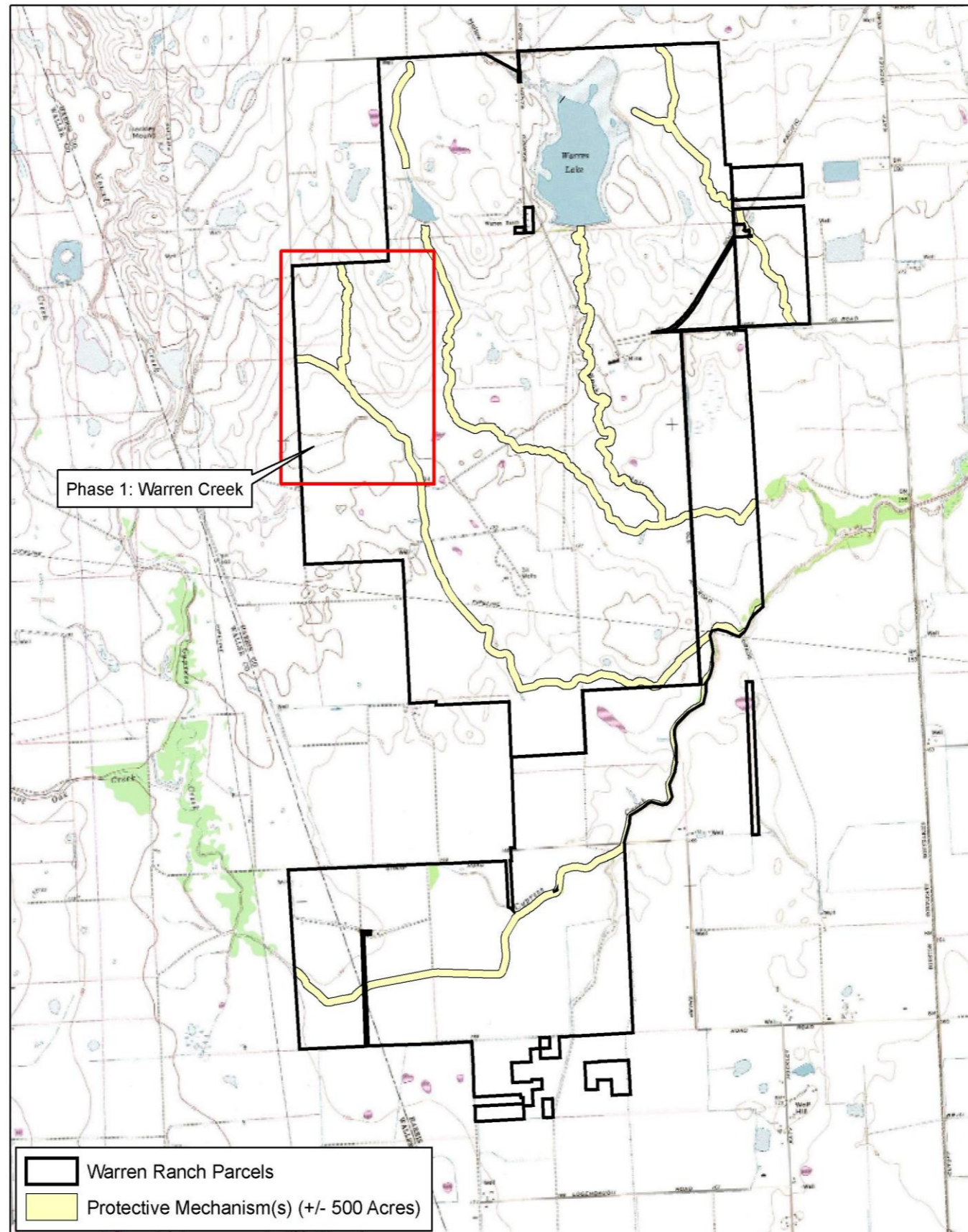


Exhibit A-1:
Protective
Mechanism(s) &
Warren Ranch Parcels

**Katy Prairie Stream
Mitigation Umbrella Bank
Harris County, TX**

